

Natural changes of population 1961 – 2022

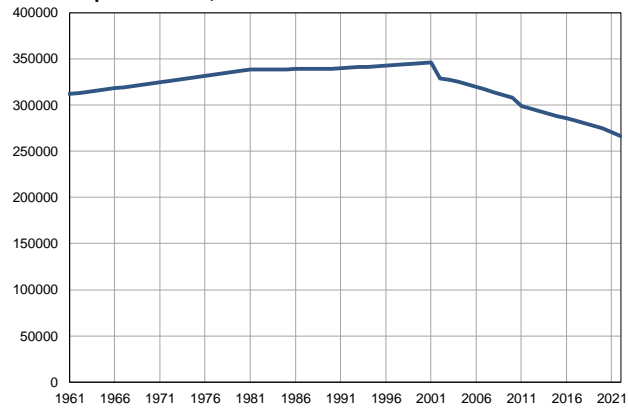
Profile
July 2023

Mačva

	1961	2022
Population size	311916	266384
Livebirths, Number	6226	2323
Deaths, Number	2808	4622
Natural increase, Number	3418	-2299
Infants deaths, Number	405	6
Livebirths, per 1,000 population	20	9
Deaths, per 1,000 population	9	17
Natural increase, per 1,000 population	11	-9
Infants deaths, per 1,000 livebirths	65	3

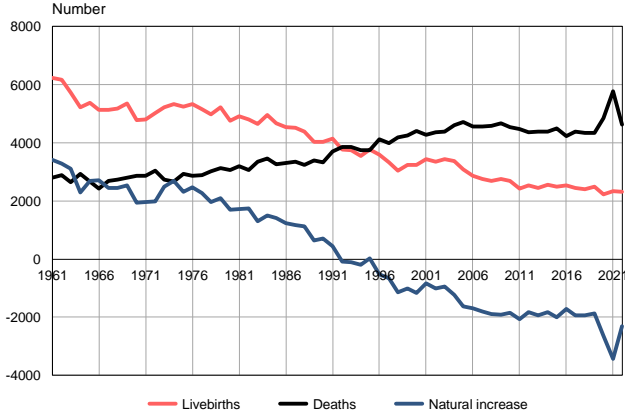
Source: Vital Statistics, SORS

Population size, 1961–2022



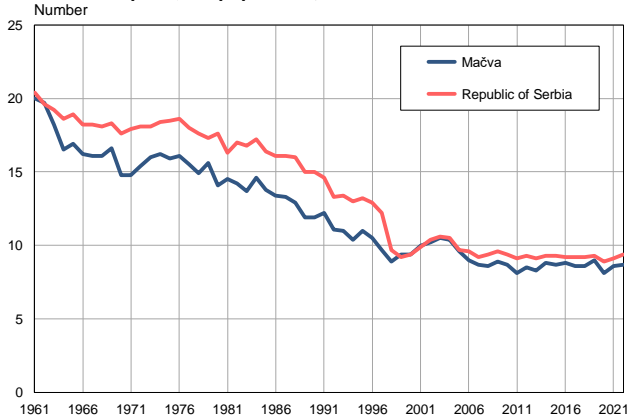
Source: Vital Statistics, SORS

Livebirths, deaths and natural increase, 1961–2022



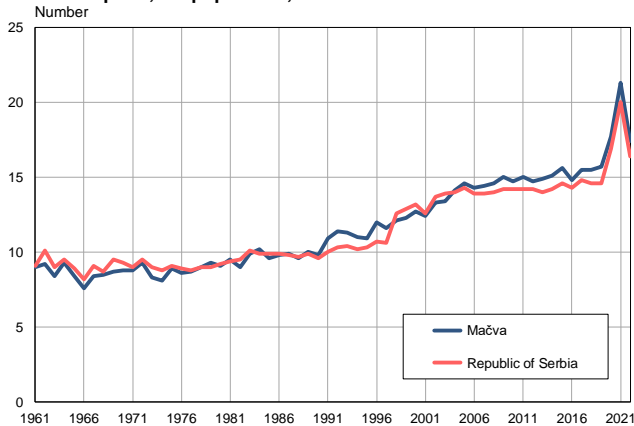
Source: Vital Statistics, SORS

Livebirths per 1,000 population, 1961–2022



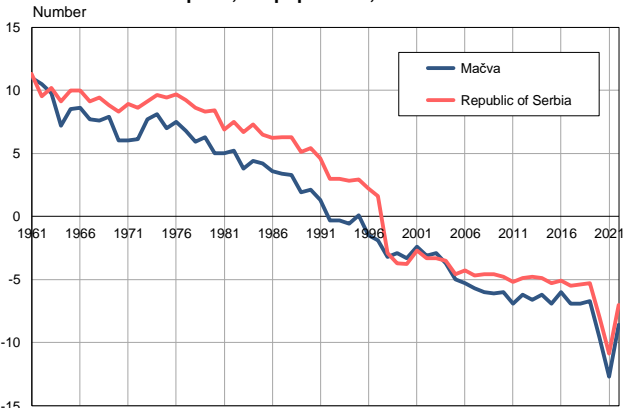
Source: Vital Statistics, SORS

Deaths per 1,000 population, 1961–2022



Source: Vital Statistics, SORS

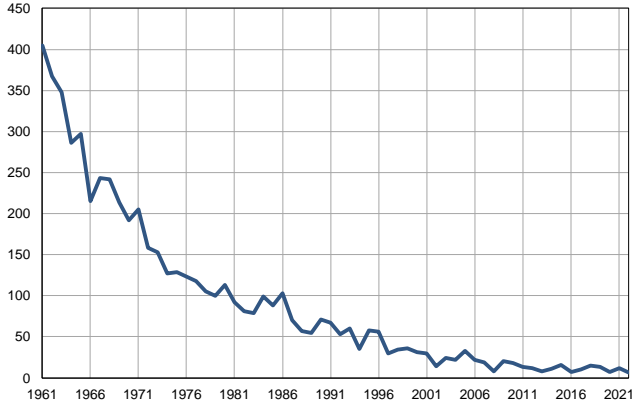
Natural increase per 1,000 population, 1961–2022



Source: Vital Statistics, SORS

Infants deaths, 1961–2022

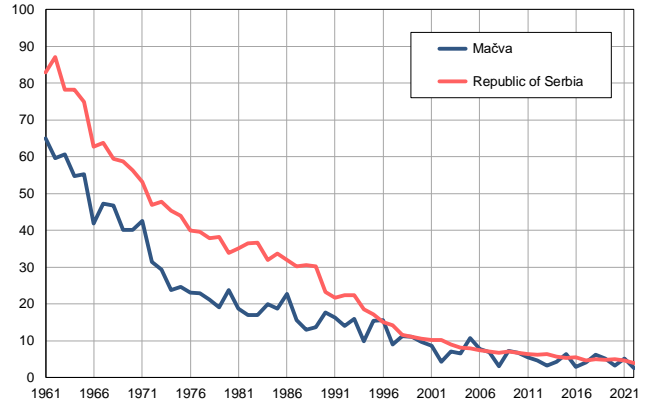
Number



Source: Vital Statistics, SORS

Infants deaths per 1,000 livebirths, 1961–2022

Number



Source: Vital Statistics, SORS

Table. Natural changes of population, Mačva

Year	Number of population	Livebirths	Deaths	Natural increase	Infants deaths	per 1000 population			Infant deaths per 1000 livebirths
						Livebirths	Deaths	Natural increase	
1961	311916	6226	2808	3418	405	20.0	9.0	11.0	65.0
1962	313167	6159	2877	3282	367	19.7	9.2	10.5	59.6
1963	314418	5738	2635	3103	348	18.2	8.4	9.8	60.6
1964	315669	5223	2933	2290	286	16.5	9.3	7.2	54.8
1965	316920	5368	2677	2691	297	16.9	8.4	8.5	55.3
1966	318172	5140	2432	2708	215	16.2	7.6	8.6	41.8
1967	319423	5134	2685	2449	243	16.1	8.4	7.7	47.3
1968	320674	5176	2725	2451	242	16.1	8.5	7.6	46.8
1969	321925	5343	2804	2539	214	16.6	8.7	7.9	40.1
1970	323176	4790	2857	1933	192	14.8	8.8	6.0	40.1
1971	324427	4807	2855	1952	205	14.8	8.8	6.0	42.6
1972	325809	5025	3042	1983	158	15.4	9.3	6.1	31.4
1973	327191	5227	2732	2495	153	16.0	8.3	7.7	29.3
1974	328573	5339	2659	2680	127	16.2	8.1	8.1	23.8
1975	329955	5247	2941	2306	129	15.9	8.9	7.0	24.6
1976	331337	5327	2861	2466	123	16.1	8.6	7.5	23.1
1977	332719	5163	2888	2275	118	15.5	8.7	6.8	22.9
1978	334101	4968	3010	1958	105	14.9	9.0	5.9	21.1
1979	335483	5223	3131	2092	100	15.6	9.3	6.3	19.1
1980	336865	4760	3071	1689	113	14.1	9.1	5.0	23.7
1981	338247	4915	3197	1718	92	14.5	9.5	5.0	18.7
1982	338387	4796	3059	1737	81	14.2	9.0	5.2	16.9
1983	338526	4652	3357	1295	79	13.7	9.9	3.8	17.0
1984	338666	4961	3461	1500	99	14.6	10.2	4.4	20.0
1985	338806	4673	3260	1413	88	13.8	9.6	4.2	18.8
1986	338946	4541	3316	1225	103	13.4	9.8	3.6	22.7
1987	339085	4524	3356	1168	70	13.3	9.9	3.4	15.5
1988	339225	4376	3247	1129	57	12.9	9.6	3.3	13.0
1989	339365	4035	3386	649	55	11.9	10.0	1.9	13.6
1990	339504	4025	3327	698	71	11.9	9.8	2.1	17.6
1991	339644	4133	3695	438	67	12.2	10.9	1.3	16.2
1992	340303	3776	3864	-88	53	11.1	11.4	-0.3	14.0
1993	340962	3745	3857	-112	60	11.0	11.3	-0.3	16.0
1994	341621	3552	3743	-191	35	10.4	11.0	-0.6	9.9
1995	342280	3770	3744	26	58	11.0	10.9	0.1	15.4
1996	342940	3598	4121	-523	56	10.5	12.0	-1.5	15.6
1997	343599	3337	3985	-648	30	9.7	11.6	-1.9	9.0
1998	344258	3047	4181	-1134	34	8.9	12.1	-3.2	11.2
1999	344917	3238	4252	-1014	36	9.4	12.3	-2.9	11.1
2000	345576	3236	4397	-1161	31	9.4	12.7	-3.3	9.6
2001	346235	3446	4285	-839	30	10.0	12.4	-2.4	8.7
2002	329116	3353	4362	-1009	14	10.2	13.3	-3.1	4.2
2003	327161	3442	4379	-937	24	10.5	13.4	-2.9	7.0
2004	325118	3369	4596	-1227	22	10.4	14.1	-3.7	6.5
2005	322703	3082	4707	-1625	33	9.6	14.6	-5.0	10.7

Table. Natural changes of population, Mačva

Year	Number of population	Livebirths	Deaths	Natural increase	Infants deaths	per 1000 population			Infant deaths per 1000 livebirths
						Livebirths	Deaths	Natural increase	
2006	320029	2870	4566	-1696	22	9.0	14.3	-5.3	7.7
2007	316999	2756	4557	-1801	19	8.7	14.4	-5.7	6.9
2008	313798	2692	4578	-1886	8	8.6	14.6	-6.0	3.0
2009	310839	2753	4674	-1921	20	8.9	15.0	-6.1	7.3
2010	307904	2678	4531	-1853	18	8.7	14.7	-6.0	6.7
2011	299345	2420	4482	-2062	13	8.1	15.0	-6.9	5.4
2012	296456	2527	4352	-1825	12	8.5	14.7	-6.2	4.7
2013	293598	2446	4385	-1939	8	8.3	14.9	-6.6	3.3
2014	290747	2562	4376	-1814	11	8.8	15.1	-6.2	4.3
2015	288034	2497	4498	-2001	16	8.7	15.6	-6.9	6.4
2016	285509	2524	4237	-1713	7	8.8	14.8	-6.0	2.8
2017	283007	2441	4383	-1942	10	8.6	15.5	-6.9	4.1
2018	280290	2406	4341	-1935	15	8.6	15.5	-6.9	6.2
2019	277560	2487	4346	-1859	13	9.0	15.7	-6.7	5.2
2020	274549	2220	4849	-2629	7	8.1	17.7	-9.6	3.2
2021	270844	2337	5767	-3430	12	8.6	21.3	-12.7	5.1
2022	266384	2323	4622	-2299	6	8.7	17.4	-8.6	2.6

Source: Vital Statistics, SORS

Definitions

Population size

Number of population in the respective year. The data on the number of population in 1961, 1971, 1981 and 1991 are census data, while for the inter-census years the number of population was calculated as an average inter-census difference. From 2002 are given the population estimates that were calculated according to the census of population results and the annual statistics of natural mechanical population movements.

Livebirths

Absolute number of live births in the course of a year. Live born child means a child giving vital signs after birth (breathing, i.e. heartbeat), even for the shortest time, regardless the mother's pregnancy duration.

Deaths

Absolute number of deaths in the course of a year. Deceased is a person that whenever after having been born live, shows permanently stopped vital signs.

Natural increase

Natural population increase is the number of live births minus the number of deaths.

Infants deaths

Absolute number of infants deaths in the course of a year. Deceased infant is a child that after having been born live and before aged one year, shows permanently stopped vital signs.

Livebirths, per 1 000 population

Livebirths rate is the ratio of the number of live births and the population size in the respective year. The number of live births is divided by the population size and then multiplied by 1000.

Deaths, per 1 000 population

General mortality rate represents the ratio between the number of deaths and the population size in the respective year. The number of deaths is divided by population size and then multiplied by 1000.

Natural increase, per 1 000 population

Natural population increase rate is the difference between the number of live births and the number of deaths, in relation to the population size in the respective year.

Natural population increase rate = (number of live births - number of deaths) / population size * 1000

Infants deaths, per 1 000 livebirths

Infant mortality rate is the ratio of deceased children under 1 year of age and live births in the respective year. The mortality rate is expressed per 1000 live births.

Infant mortality rate = (number of deceased children under 1 year of age / number of live births) * 1000

Additional info:



Download all database data in Excel format:

[Data](#)



DevInfo profiles:

devinfo.stat.gov.rs/SerbiaProfileLauncher/?lang=en



DevInfo online database:

devinfo.stat.gov.rs/vitalna



For additional information or questions please contact:

devinfo@stat.gov.rs