

# Natural changes of population 1961 – 2022

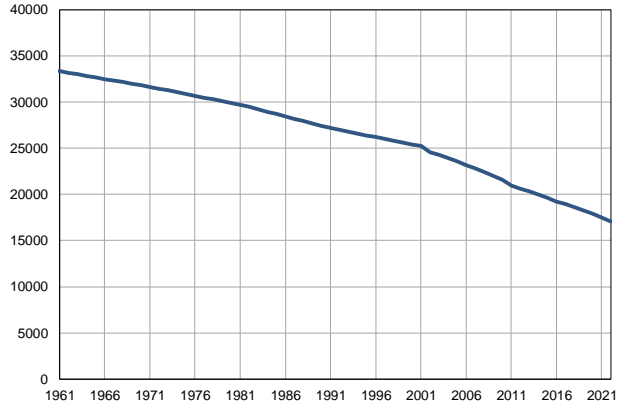
Profile  
July 2023

## Lučani

	1961	2022
Population size	33336	17057
Livebirths, Number	569	133
Deaths, Number	254	375
Natural increase, Number	315	-242
Infants deaths, Number	20	0
Livebirths, per 1,000 population	17	8
Deaths, per 1,000 population	8	22
Natural increase, per 1,000 population	10	-14
Infants deaths, per 1,000 livebirths	35	0

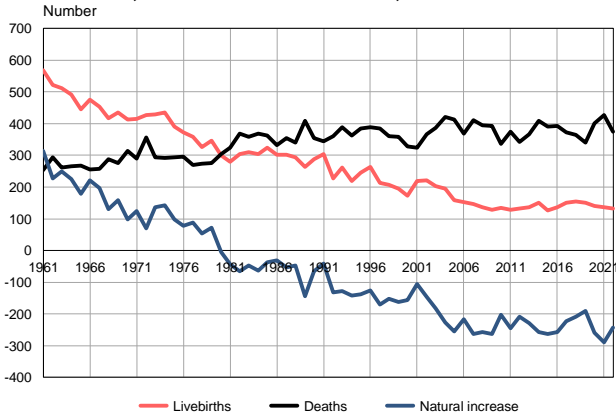
Source: Vital Statistics, SORS

Population size, 1961–2022



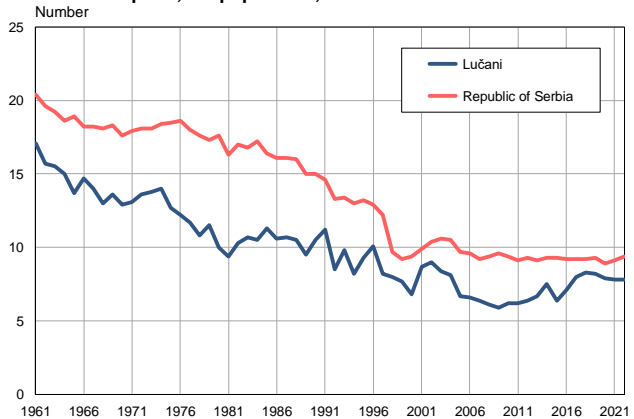
Source: Vital Statistics, SORS

Livebirths, deaths and natural increase, 1961–2022



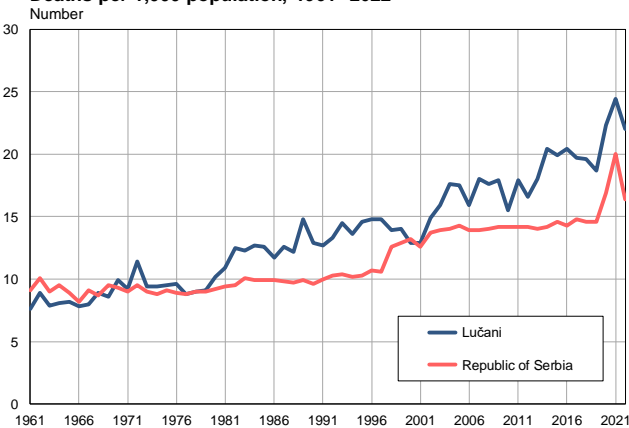
Source: Vital Statistics, SORS

Livebirths per 1,000 population, 1961–2022



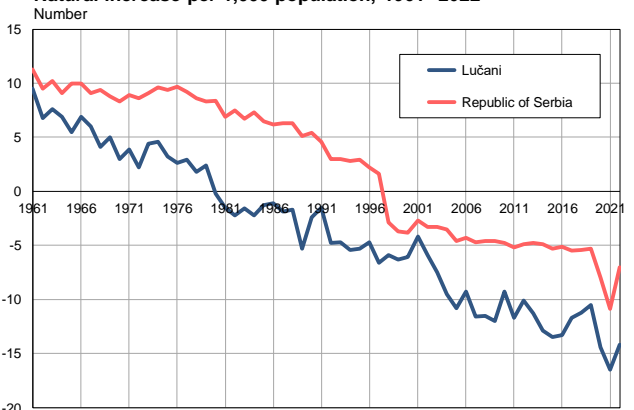
Source: Vital Statistics, SORS

Deaths per 1,000 population, 1961–2022



Source: Vital Statistics, SORS

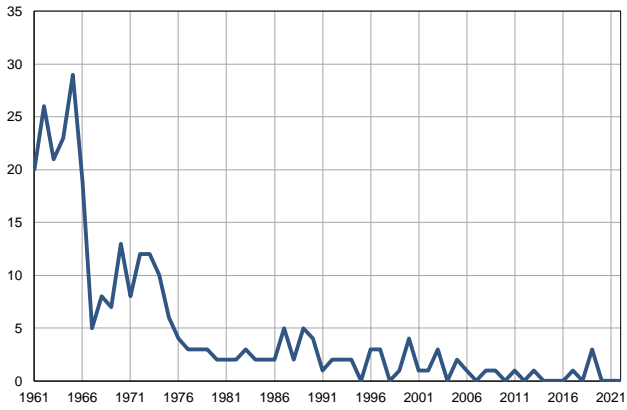
Natural increase per 1,000 population, 1961–2022



Source: Vital Statistics, SORS

**Infants deaths, 1961–2022**

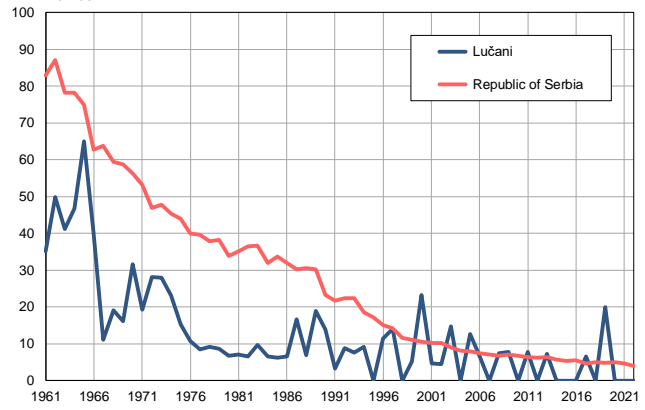
Number



Source: Vital Statistics, SORS

**Infants deaths per 1,000 livebirths, 1961–2022**

Number



Source: Vital Statistics, SORS

**Table. Natural changes of population, Lučani**

Year	Number of population	Livebirths	Deaths	Natural increase	Infants deaths	per 1000 population			Infant deaths per 1000 livebirths
						Livebirths	Deaths	Natural increase	
1961	33336	569	254	315	20	17.1	7.6	9.5	35.1
1962	33166	521	294	227	26	15.7	8.9	6.8	49.9
1963	32998	511	261	250	21	15.5	7.9	7.6	41.1
1964	32829	491	266	225	23	15.0	8.1	6.9	46.8
1965	32660	446	268	178	29	13.7	8.2	5.5	65.0
1966	32491	476	255	221	19	14.7	7.8	6.9	39.9
1967	32322	454	257	197	5	14.0	8.0	6.0	11.0
1968	32153	418	287	131	8	13.0	8.9	4.1	19.1
1969	31984	435	276	159	7	13.6	8.6	5.0	16.1
1970	31815	412	314	98	13	12.9	9.9	3.0	31.6
1971	31646	415	290	125	8	13.1	9.2	3.9	19.3
1972	31452	427	357	70	12	13.6	11.4	2.2	28.1
1973	31258	430	294	136	12	13.8	9.4	4.4	27.9
1974	31065	435	292	143	10	14.0	9.4	4.6	23.0
1975	30871	391	293	98	6	12.7	9.5	3.2	15.3
1976	30676	373	295	78	4	12.2	9.6	2.6	10.7
1977	30483	358	269	89	3	11.7	8.8	2.9	8.4
1978	30289	327	274	53	3	10.8	9.0	1.8	9.2
1979	30095	346	275	71	3	11.5	9.1	2.4	8.7
1980	29902	300	304	-4	2	10.0	10.2	-0.2	6.7
1981	29708	280	324	-44	2	9.4	10.9	-1.5	7.1
1982	29453	304	369	-65	2	10.3	12.5	-2.2	6.6
1983	29200	311	359	-48	3	10.7	12.3	-1.6	9.6
1984	28945	304	368	-64	2	10.5	12.7	-2.2	6.6
1985	28691	325	362	-37	2	11.3	12.6	-1.3	6.2
1986	28437	302	333	-31	2	10.6	11.7	-1.1	6.6
1987	28183	301	354	-53	5	10.7	12.6	-1.9	16.6
1988	27929	293	341	-48	2	10.5	12.2	-1.7	6.8
1989	27675	264	409	-145	5	9.5	14.8	-5.3	18.9
1990	27421	288	354	-66	4	10.5	12.9	-2.4	13.9
1991	27167	303	345	-42	1	11.2	12.7	-1.5	3.3
1992	26973	228	360	-132	2	8.5	13.3	-4.8	8.8
1993	26779	262	389	-127	2	9.8	14.5	-4.7	7.6
1994	26584	219	362	-143	2	8.2	13.6	-5.4	9.1
1995	26390	246	384	-138	0	9.3	14.6	-5.3	0.0
1996	26196	264	389	-125	3	10.1	14.8	-4.7	11.4
1997	26001	214	384	-170	3	8.2	14.8	-6.6	14.0
1998	25808	207	360	-153	0	8.0	13.9	-5.9	0.0
1999	25613	196	359	-163	1	7.7	14.0	-6.3	5.1
2000	25418	172	329	-157	4	6.8	12.9	-6.1	23.3
2001	25225	219	325	-106	1	8.7	12.9	-4.2	4.6
2002	24552	221	367	-146	1	9.0	14.9	-5.9	4.5
2003	24263	204	386	-182	3	8.4	15.9	-7.5	14.7
2004	23937	195	421	-226	0	8.1	17.6	-9.5	0.0
2005	23572	158	413	-255	2	6.7	17.5	-10.8	12.7

**Table. Natural changes of population, Lučani**

Year	Number of population	Livebirths	Deaths	Natural increase	Infants deaths	per 1000 population			Infant deaths per 1000 livebirths
						Livebirths	Deaths	Natural increase	
2006	23189	152	369	-217	1	6.6	15.9	-9.3	6.6
2007	22810	147	411	-264	0	6.4	18.0	-11.6	0.0
2008	22426	136	394	-258	1	6.1	17.6	-11.5	7.4
2009	22015	129	393	-264	1	5.9	17.9	-12.0	7.8
2010	21617	134	336	-202	0	6.2	15.5	-9.3	0.0
2011	20948	129	374	-245	1	6.2	17.9	-11.7	7.8
2012	20631	133	342	-209	0	6.4	16.6	-10.1	0.0
2013	20344	137	366	-229	1	6.7	18.0	-11.3	7.3
2014	20012	151	409	-258	0	7.5	20.4	-12.9	0.0
2015	19625	126	390	-264	0	6.4	19.9	-13.5	0.0
2016	19255	136	393	-257	0	7.1	20.4	-13.3	0.0
2017	18918	151	373	-222	1	8.0	19.7	-11.7	6.6
2018	18602	155	364	-209	0	8.3	19.6	-11.2	0.0
2019	18278	150	341	-191	3	8.2	18.7	-10.5	20.0
2020	17915	141	400	-259	0	7.9	22.3	-14.4	0.0
2021	17529	137	427	-290	0	7.8	24.4	-16.5	0.0
2022	17057	133	375	-242	0	7.8	22.0	-14.2	0.0

Source: Vital Statistics, SORS

## Definitions

### Population size

Number of population in the respective year. The data on the number of population in 1961, 1971, 1981 and 1991 are census data, while for the inter-census years the number of population was calculated as an average inter-census difference. From 2002 are given the population estimates that were calculated according to the census of population results and the annual statistics of natural mechanical population movements.

### Livebirths

Absolute number of live births in the course of a year. Live born child means a child giving vital signs after birth (breathing, i.e. heartbeat), even for the shortest time, regardless the mother's pregnancy duration.

### Deaths

Absolute number of deaths in the course of a year. Deceased is a person that whenever after having been born live, shows permanently stopped vital signs.

### Natural increase

Natural population increase is the number of live births minus the number of deaths.

### Infants deaths

Absolute number of infants deaths in the course of a year. Deceased infant is a child that after having been born live and before aged one year, shows permanently stopped vital signs.

### Livebirths, per 1 000 population

Livebirths rate is the ratio of the number of live births and the population size in the respective year. The number of live births is divided by the population size and then multiplied by 1000.

### Deaths, per 1 000 population

General mortality rate represents the ratio between the number of deaths and the population size in the respective year. The number of deaths is divided by population size and then multiplied by 1000.

### Natural increase, per 1 000 population

Natural population increase rate is the difference between the number of live births and the number of deaths, in relation to the population size in the respective year.

Natural population increase rate = (number of live births - number of deaths) / population size \* 1000

### Infants deaths, per 1 000 livebirths

Infant mortality rate is the ratio of deceased children under 1 year of age and live births in the respective year. The mortality rate is expressed per 1000 live births.

Infant mortality rate = (number of deceased children under 1 year of age / number of live births) \* 1000

## Additional info:



Download all database data in Excel format:

[Data](#)



DevInfo profiles:

[devinfo.stat.gov.rs/SerbiaProfileLauncher/?lang=en](http://devinfo.stat.gov.rs/SerbiaProfileLauncher/?lang=en)



DevInfo online database:

[devinfo.stat.gov.rs/vitalna](http://devinfo.stat.gov.rs/vitalna)



For additional information or questions please contact:

[devinfo@stat.gov.rs](mailto:devinfo@stat.gov.rs)