

# Natural changes of population 1961 – 2022

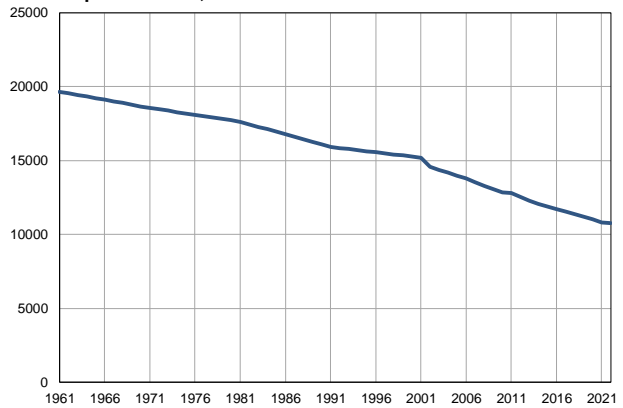
Profile  
July 2023

## Ljig

	1961	2022
Population size	19662	10741
Livebirths, Number	270	83
Deaths, Number	164	179
Natural increase, Number	106	-96
Infants deaths, Number	15	1
Livebirths, per 1,000 population	14	8
Deaths, per 1,000 population	8	17
Natural increase, per 1,000 population	5	-9
Infants deaths, per 1,000 livebirths	56	12

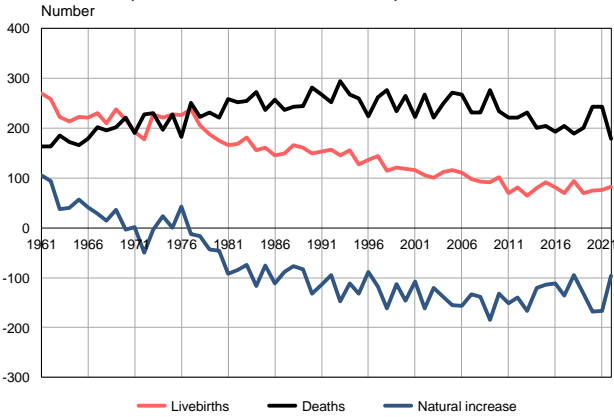
Source: Vital Statistics, SORS

Population size, 1961–2022



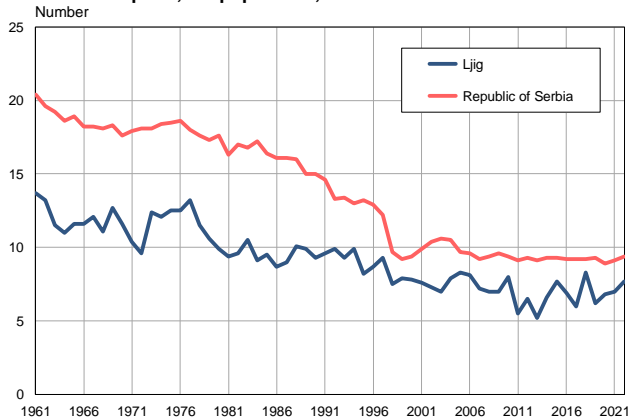
Source: Vital Statistics, SORS

Livebirths, deaths and natural increase, 1961–2022



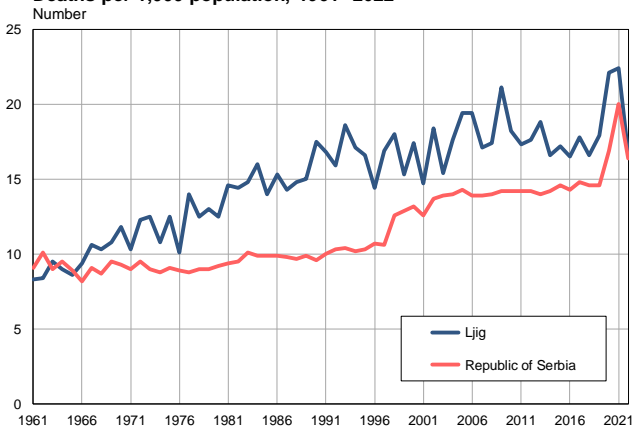
Source: Vital Statistics, SORS

Livebirths per 1,000 population, 1961–2022



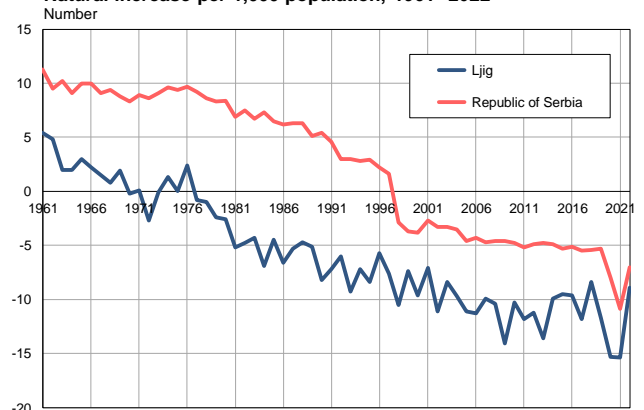
Source: Vital Statistics, SORS

Deaths per 1,000 population, 1961–2022



Source: Vital Statistics, SORS

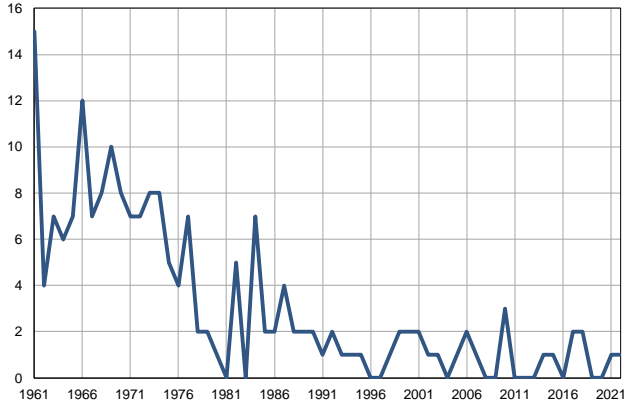
Natural increase per 1,000 population, 1961–2022



Source: Vital Statistics, SORS

**Infants deaths, 1961–2022**

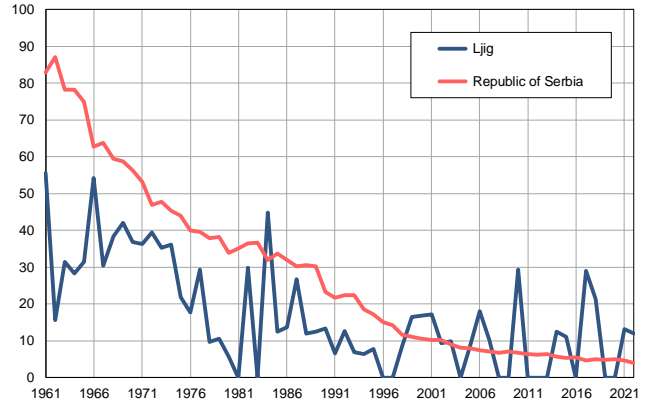
Number



Source: Vital Statistics, SORS

**Infants deaths per 1,000 livebirths, 1961–2022**

Number



Source: Vital Statistics, SORS

**Table. Natural changes of population, Ljig**

Year	Number of population	Livebirths	Deaths	Natural increase	Infants deaths	per 1000 population			Infant deaths per 1000 livebirths
						Livebirths	Deaths	Natural increase	
1961	19662	270	164	106	15	13.7	8.3	5.4	55.6
1962	19551	258	164	94	4	13.2	8.4	4.8	15.5
1963	19439	223	185	38	7	11.5	9.5	2.0	31.4
1964	19328	213	173	40	6	11.0	9.0	2.0	28.2
1965	19216	223	166	57	7	11.6	8.6	3.0	31.4
1966	19105	221	179	42	12	11.6	9.4	2.2	54.3
1967	18994	230	202	28	7	12.1	10.6	1.5	30.4
1968	18883	209	195	14	8	11.1	10.3	0.8	38.3
1969	18772	238	202	36	10	12.7	10.8	1.9	42.0
1970	18660	217	221	-4	8	11.6	11.8	-0.2	36.9
1971	18549	193	191	2	7	10.4	10.3	0.1	36.3
1972	18456	177	227	-50	7	9.6	12.3	-2.7	39.5
1973	18364	227	230	-3	8	12.4	12.5	-0.1	35.2
1974	18270	221	197	24	8	12.1	10.8	1.3	36.2
1975	18177	228	228	0	5	12.5	12.5	0.0	21.9
1976	18085	226	183	43	4	12.5	10.1	2.4	17.7
1977	17992	238	251	-13	7	13.2	14.0	-0.8	29.4
1978	17899	206	223	-17	2	11.5	12.5	-1.0	9.7
1979	17805	188	232	-44	2	10.6	13.0	-2.4	10.6
1980	17713	175	221	-46	1	9.9	12.5	-2.6	5.7
1981	17620	166	258	-92	0	9.4	14.6	-5.2	0.0
1982	17449	168	252	-84	5	9.6	14.4	-4.8	29.8
1983	17279	181	255	-74	0	10.5	14.8	-4.3	0.0
1984	17108	156	273	-117	7	9.1	16.0	-6.9	44.9
1985	16937	161	237	-76	2	9.5	14.0	-4.5	12.4
1986	16765	146	257	-111	2	8.7	15.3	-6.6	13.7
1987	16595	149	237	-88	4	9.0	14.3	-5.3	26.8
1988	16424	166	243	-77	2	10.1	14.8	-4.7	12.0
1989	16254	161	244	-83	2	9.9	15.0	-5.1	12.4
1990	16083	149	281	-132	2	9.3	17.5	-8.2	13.4
1991	15912	153	267	-114	1	9.6	16.8	-7.2	6.5
1992	15839	157	252	-95	2	9.9	15.9	-6.0	12.7
1993	15767	146	294	-148	1	9.3	18.6	-9.3	6.8
1994	15694	156	268	-112	1	9.9	17.1	-7.2	6.4
1995	15622	128	260	-132	1	8.2	16.6	-8.4	7.8
1996	15549	136	224	-88	0	8.7	14.4	-5.7	0.0
1997	15476	144	262	-118	0	9.3	16.9	-7.6	0.0
1998	15404	115	277	-162	1	7.5	18.0	-10.5	8.7
1999	15332	121	234	-113	2	7.9	15.3	-7.4	16.5
2000	15259	119	265	-146	2	7.8	17.4	-9.6	16.8
2001	15186	116	223	-107	2	7.6	14.7	-7.1	17.2
2002	14568	106	268	-162	1	7.3	18.4	-11.1	9.4
2003	14367	101	221	-120	1	7.0	15.4	-8.4	9.9
2004	14181	112	250	-138	0	7.9	17.6	-9.7	0.0
2005	13985	116	271	-155	1	8.3	19.4	-11.1	8.6

**Table. Natural changes of population, Ljig**

Year	Number of population	Livebirths	Deaths	Natural increase	Infants deaths	per 1000 population			Infant deaths per 1000 livebirths
						Livebirths	Deaths	Natural increase	
2006	13783	111	268	-157	2	8.1	19.4	-11.3	18.0
2007	13518	98	231	-133	1	7.2	17.1	-9.9	10.2
2008	13271	93	231	-138	0	7.0	17.4	-10.4	0.0
2009	13067	91	276	-185	0	7.0	21.1	-14.1	0.0
2010	12827	102	234	-132	3	8.0	18.2	-10.3	29.4
2011	12787	70	221	-151	0	5.5	17.3	-11.8	0.0
2012	12549	81	221	-140	0	6.5	17.6	-11.2	0.0
2013	12298	64	231	-167	0	5.2	18.8	-13.6	0.0
2014	12073	80	200	-120	1	6.6	16.6	-9.9	12.5
2015	11893	91	205	-114	1	7.7	17.2	-9.5	11.0
2016	11723	81	193	-112	0	6.9	16.5	-9.6	0.0
2017	11549	69	205	-136	2	6.0	17.8	-11.8	29.0
2018	11374	94	189	-95	2	8.3	16.6	-8.4	21.3
2019	11204	69	201	-132	0	6.2	17.9	-11.7	0.0
2020	11017	75	243	-168	0	6.8	22.1	-15.3	0.0
2021	10825	76	243	-167	1	7.0	22.4	-15.4	13.2
2022	10741	83	179	-96	1	7.7	16.7	-8.9	12.0

Source: Vital Statistics, SORS

## Definitions

### Population size

Number of population in the respective year. The data on the number of population in 1961, 1971, 1981 and 1991 are census data, while for the inter-census years the number of population was calculated as an average inter-census difference. From 2002 are given the population estimates that were calculated according to the census of population results and the annual statistics of natural mechanical population movements.

### Livebirths

Absolute number of live births in the course of a year. Live born child means a child giving vital signs after birth (breathing, i.e. heartbeat), even for the shortest time, regardless the mother's pregnancy duration.

### Deaths

Absolute number of deaths in the course of a year. Deceased is a person that whenever after having been born live, shows permanently stopped vital signs.

### Natural increase

Natural population increase is the number of live births minus the number of deaths.

### Infants deaths

Absolute number of infants deaths in the course of a year. Deceased infant is a child that after having been born live and before aged one year, shows permanently stopped vital signs.

### Livebirths, per 1 000 population

Livebirths rate is the ratio of the number of live births and the population size in the respective year. The number of live births is divided by the population size and then multiplied by 1000.

### Deaths, per 1 000 population

General mortality rate represents the ratio between the number of deaths and the population size in the respective year. The number of deaths is divided by population size and then multiplied by 1000.

### Natural increase, per 1 000 population

Natural population increase rate is the difference between the number of live births and the number of deaths, in relation to the population size in the respective year.

Natural population increase rate = (number of live births - number of deaths) / population size \* 1000

### Infants deaths, per 1 000 livebirths

Infant mortality rate is the ratio of deceased children under 1 year of age and live births in the respective year. The mortality rate is expressed per 1000 live births.

Infant mortality rate = (number of deceased children under 1 year of age / number of live births) \* 1000

## Additional info:



Download all database data in Excel format:

[Data](#)



DevInfo profiles:

[devinfo.stat.gov.rs/SerbiaProfileLauncher/?lang=en](http://devinfo.stat.gov.rs/SerbiaProfileLauncher/?lang=en)



DevInfo online database:

[devinfo.stat.gov.rs/vitalna](http://devinfo.stat.gov.rs/vitalna)



For additional information or questions please contact:

[devinfo@stat.gov.rs](mailto:devinfo@stat.gov.rs)