

# Natural changes of population 1961 – 2022

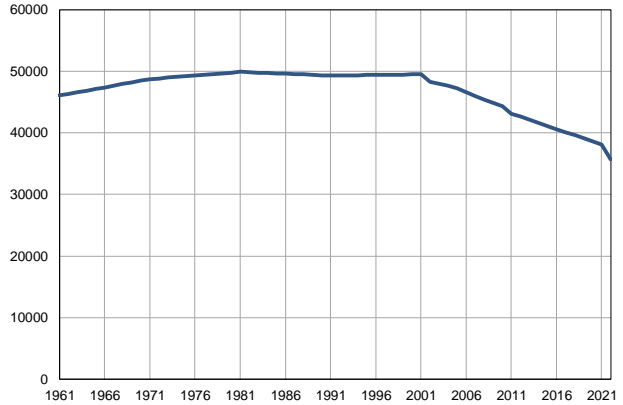
Profile  
July 2023

## Kula

	1961	2022
Population size	46062	35674
Livebirths, Number	1047	312
Deaths, Number	463	613
Natural increase, Number	584	-301
Infants deaths, Number	68	2
Livebirths, per 1,000 population	23	9
Deaths, per 1,000 population	10	17
Natural increase, per 1,000 population	13	-8
Infants deaths, per 1,000 livebirths	65	6

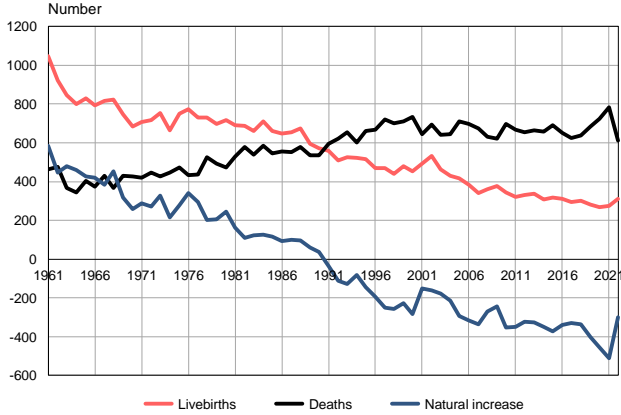
Source: Vital Statistics, SORS

Population size, 1961–2022



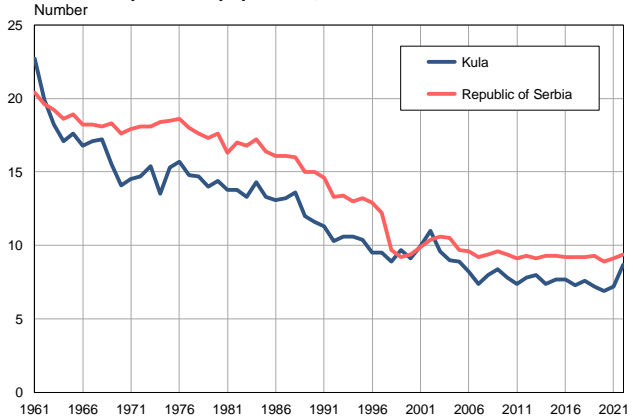
Source: Vital Statistics, SORS

Livebirths, deaths and natural increase, 1961–2022



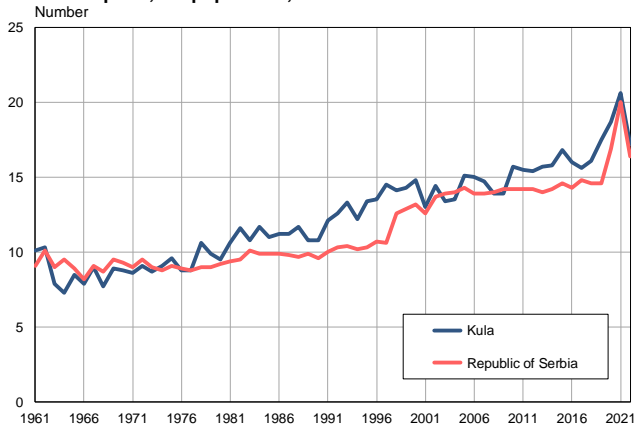
Source: Vital Statistics, SORS

Livebirths per 1,000 population, 1961–2022



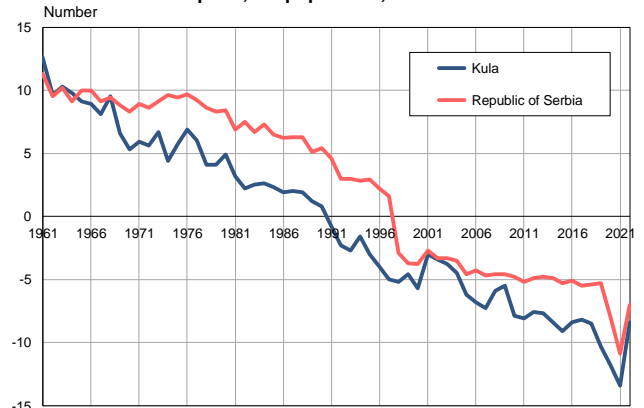
Source: Vital Statistics, SORS

Deaths per 1,000 population, 1961–2022



Source: Vital Statistics, SORS

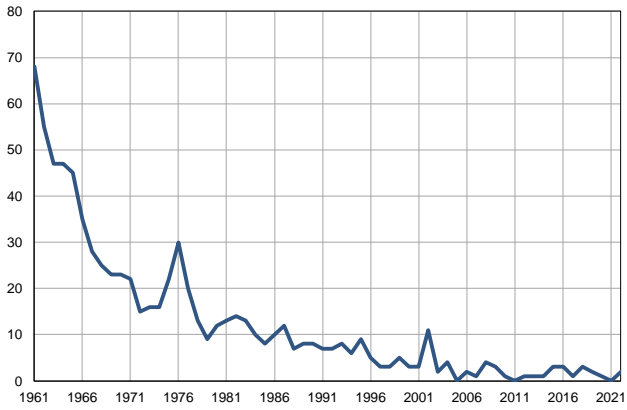
Natural increase per 1,000 population, 1961–2022



Source: Vital Statistics, SORS

**Infants deaths, 1961–2022**

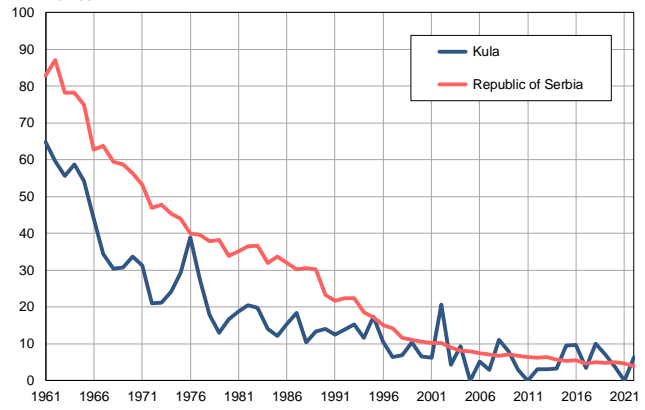
Number



Source: Vital Statistics, SORS

**Infants deaths per 1,000 livebirths, 1961–2022**

Number



Source: Vital Statistics, SORS

**Table. Natural changes of population, Kula**

Year	Number of population	Livebirths	Deaths	Natural increase	Infants deaths	per 1000 population			Infant deaths per 1000 livebirths
						Livebirths	Deaths	Natural increase	
1961	46062	1047	463	584	68	22.7	10.1	12.6	64.9
1962	46329	923	476	447	55	19.9	10.3	9.6	59.6
1963	46595	846	368	478	47	18.2	7.9	10.3	55.6
1964	46862	801	343	458	47	17.1	7.3	9.8	58.7
1965	47128	829	402	427	45	17.6	8.5	9.1	54.3
1966	47395	794	374	420	35	16.8	7.9	8.9	44.1
1967	47661	815	430	385	28	17.1	9.0	8.1	34.4
1968	47928	822	368	454	25	17.2	7.7	9.5	30.4
1969	48194	748	431	317	23	15.5	8.9	6.6	30.7
1970	48460	684	425	259	23	14.1	8.8	5.3	33.6
1971	48727	706	419	287	22	14.5	8.6	5.9	31.2
1972	48845	716	446	270	15	14.7	9.1	5.6	20.9
1973	48961	754	428	326	16	15.4	8.7	6.7	21.2
1974	49079	663	447	216	16	13.5	9.1	4.4	24.1
1975	49195	751	473	278	22	15.3	9.6	5.7	29.3
1976	49313	772	432	340	30	15.7	8.8	6.9	38.9
1977	49430	731	437	294	20	14.8	8.8	6.0	27.4
1978	49547	729	527	202	13	14.7	10.6	4.1	17.8
1979	49664	697	491	206	9	14.0	9.9	4.1	12.9
1980	49781	718	472	246	12	14.4	9.5	4.9	16.7
1981	49898	691	530	161	13	13.8	10.6	3.2	18.8
1982	49839	687	577	110	14	13.8	11.6	2.2	20.4
1983	49781	660	539	121	13	13.3	10.8	2.5	19.7
1984	49722	711	584	127	10	14.3	11.7	2.6	14.1
1985	49663	661	545	116	8	13.3	11.0	2.3	12.1
1986	49605	648	555	93	10	13.1	11.2	1.9	15.4
1987	49546	653	553	100	12	13.2	11.2	2.0	18.4
1988	49487	673	577	96	7	13.6	11.7	1.9	10.4
1989	49428	595	536	59	8	12.0	10.8	1.2	13.4
1990	49370	572	534	38	8	11.6	10.8	0.8	14.0
1991	49311	559	596	-37	7	11.3	12.1	-0.8	12.5
1992	49332	508	620	-112	7	10.3	12.6	-2.3	13.8
1993	49351	525	655	-130	8	10.6	13.3	-2.7	15.2
1994	49371	521	603	-82	6	10.6	12.2	-1.6	11.5
1995	49391	516	662	-146	9	10.4	13.4	-3.0	17.4
1996	49411	471	666	-195	5	9.5	13.5	-4.0	10.6
1997	49431	468	719	-251	3	9.5	14.5	-5.0	6.4
1998	49451	441	699	-258	3	8.9	14.1	-5.2	6.8
1999	49471	480	709	-229	5	9.7	14.3	-4.6	10.4
2000	49491	452	734	-282	3	9.1	14.8	-5.7	6.6
2001	49511	493	646	-153	3	10.0	13.0	-3.0	6.1
2002	48296	531	694	-163	11	11.0	14.4	-3.4	20.7
2003	48007	462	641	-179	2	9.6	13.4	-3.8	4.3
2004	47662	430	645	-215	4	9.0	13.5	-4.5	9.3
2005	47216	418	712	-294	0	8.9	15.1	-6.2	0.0

**Table. Natural changes of population, Kula**

Year	Number of population	Livebirths	Deaths	Natural increase	Infants deaths	per 1000 population			Infant deaths per 1000 livebirths
						Livebirths	Deaths	Natural increase	
2006	46631	383	698	-315	2	8.2	15.0	-6.8	5.2
2007	45960	339	674	-335	1	7.4	14.7	-7.3	2.9
2008	45351	361	632	-271	4	8.0	13.9	-5.9	11.1
2009	44852	378	622	-244	3	8.4	13.9	-5.5	7.9
2010	44324	344	696	-352	1	7.8	15.7	-7.9	2.9
2011	43097	321	669	-348	0	7.4	15.5	-8.1	0.0
2012	42621	331	655	-324	1	7.8	15.4	-7.6	3.0
2013	42110	338	663	-325	1	8.0	15.7	-7.7	3.0
2014	41587	308	659	-351	1	7.4	15.8	-8.4	3.2
2015	41078	317	691	-374	3	7.7	16.8	-9.1	9.5
2016	40550	311	650	-339	3	7.7	16.0	-8.4	9.6
2017	40055	294	623	-329	1	7.3	15.6	-8.2	3.4
2018	39609	301	637	-336	3	7.6	16.1	-8.5	10.0
2019	39141	281	684	-403	2	7.2	17.5	-10.3	7.1
2020	38630	268	724	-456	1	6.9	18.7	-11.8	3.7
2021	38051	273	783	-510	0	7.2	20.6	-13.4	0.0
2022	35674	312	613	-301	2	8.7	17.2	-8.4	6.4

Source: Vital Statistics, SORS

## Definitions

### Population size

Number of population in the respective year. The data on the number of population in 1961, 1971, 1981 and 1991 are census data, while for the inter-census years the number of population was calculated as an average inter-census difference. From 2002 are given the population estimates that were calculated according to the census of population results and the annual statistics of natural mechanical population movements.

### Livebirths

Absolute number of live births in the course of a year. Live born child means a child giving vital signs after birth (breathing, i.e. heartbeat), even for the shortest time, regardless the mother's pregnancy duration.

### Deaths

Absolute number of deaths in the course of a year. Deceased is a person that whenever after having been born live, shows permanently stopped vital signs.

### Natural increase

Natural population increase is the number of live births minus the number of deaths.

### Infants deaths

Absolute number of infants deaths in the course of a year. Deceased infant is a child that after having been born live and before aged one year, shows permanently stopped vital signs.

### Livebirths, per 1 000 population

Livebirths rate is the ratio of the number of live births and the population size in the respective year. The number of live births is divided by the population size and then multiplied by 1000.

### Deaths, per 1 000 population

General mortality rate represents the ratio between the number of deaths and the population size in the respective year. The number of deaths is divided by population size and then multiplied by 1000.

### Natural increase, per 1 000 population

Natural population increase rate is the difference between the number of live births and the number of deaths, in relation to the population size in the respective year.

Natural population increase rate = (number of live births - number of deaths) / population size \* 1000

### Infants deaths, per 1 000 livebirths

Infant mortality rate is the ratio of deceased children under 1 year of age and live births in the respective year. The mortality rate is expressed per 1000 live births.

Infant mortality rate = (number of deceased children under 1 year of age / number of live births) \* 1000

## Additional info:



Download all database data in Excel format:

[Data](#)



DevInfo profiles:

[devinfo.stat.gov.rs/SerbiaProfileLauncher/?lang=en](http://devinfo.stat.gov.rs/SerbiaProfileLauncher/?lang=en)



DevInfo online database:

[devinfo.stat.gov.rs/vitalna](http://devinfo.stat.gov.rs/vitalna)



For additional information or questions please contact:

[devinfo@stat.gov.rs](mailto:devinfo@stat.gov.rs)