

Natural changes of population 1961 – 2022

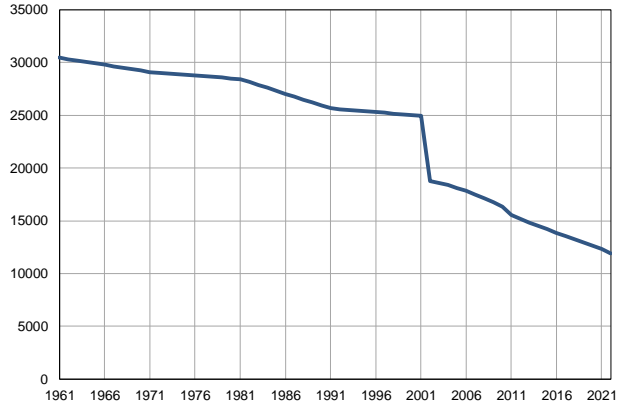
Profile
July 2023

Kučevo

	1961	2022
Population size	30452	11885
Livebirths, Number	405	63
Deaths, Number	282	293
Natural increase, Number	123	-230
Infants deaths, Number	16	1
Livebirths, per 1,000 population	13	5
Deaths, per 1,000 population	9	25
Natural increase, per 1,000 population	4	-19
Infants deaths, per 1,000 livebirths	40	16

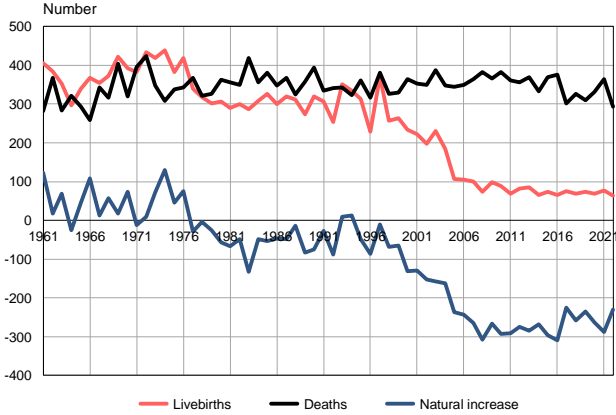
Source: Vital Statistics, SORS

Population size, 1961–2022



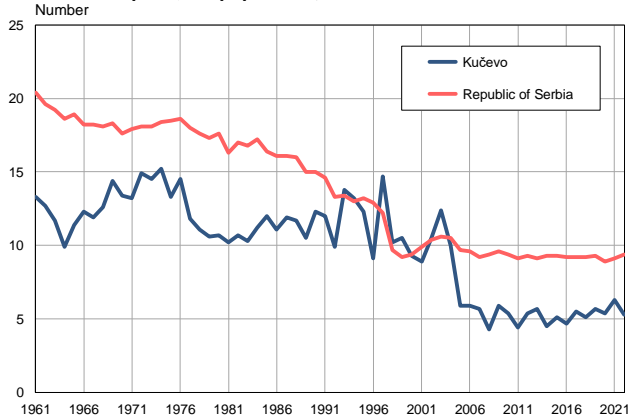
Source: Vital Statistics, SORS

Livebirths, deaths and natural increase, 1961–2022



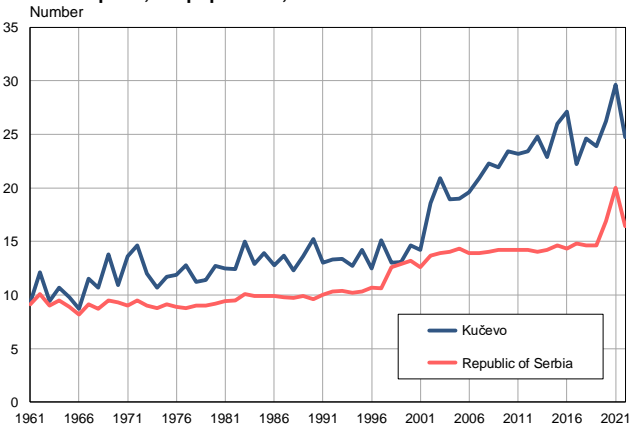
Source: Vital Statistics, SORS

Livebirths per 1,000 population, 1961–2022



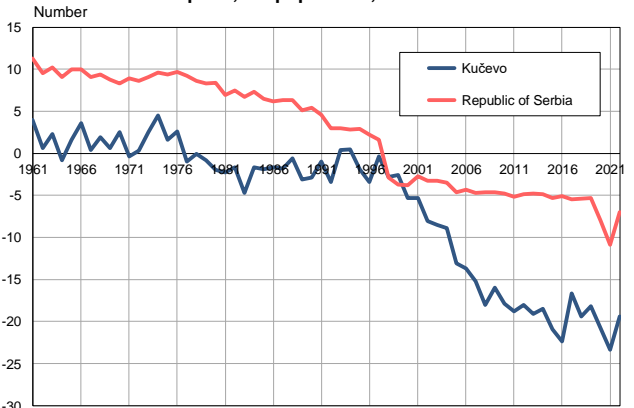
Source: Vital Statistics, SORS

Deaths per 1,000 population, 1961–2022



Source: Vital Statistics, SORS

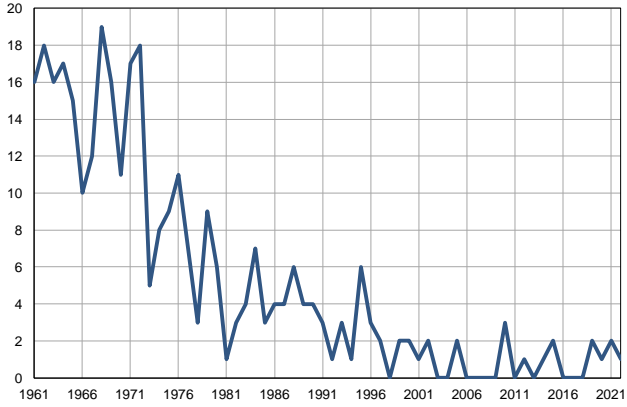
Natural increase per 1,000 population, 1961–2022



Source: Vital Statistics, SORS

Infants deaths, 1961–2022

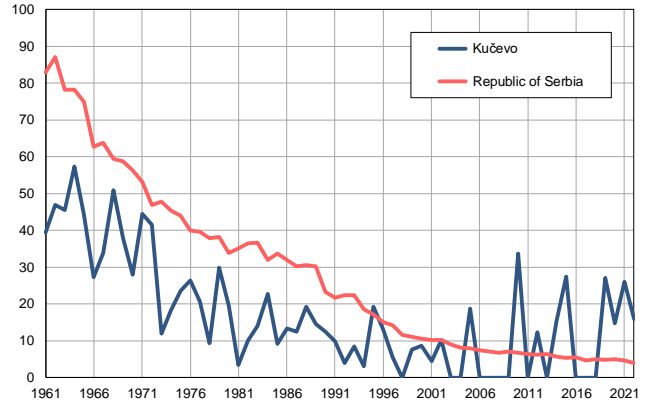
Number



Source: Vital Statistics, SORS

Infants deaths per 1,000 livebirths, 1961–2022

Number



Source: Vital Statistics, SORS

Table. Natural changes of population, Kučevo

Year	Number of population	Livebirths	Deaths	Natural increase	Infants deaths	per 1000 population			Infant deaths per 1000 livebirths
						Livebirths	Deaths	Natural increase	
1961	30452	405	282	123	16	13.3	9.3	4.0	39.5
1962	30316	384	367	17	18	12.7	12.1	0.6	46.9
1963	30181	352	283	69	16	11.7	9.4	2.3	45.5
1964	30045	296	322	-26	17	9.9	10.7	-0.8	57.4
1965	29909	340	294	46	15	11.4	9.8	1.6	44.1
1966	29774	367	258	109	10	12.3	8.7	3.6	27.2
1967	29638	354	342	12	12	11.9	11.5	0.4	33.9
1968	29502	373	316	57	19	12.6	10.7	1.9	50.9
1969	29366	422	404	18	16	14.4	13.8	0.6	37.9
1970	29230	393	319	74	11	13.4	10.9	2.5	28.0
1971	29095	383	396	-13	17	13.2	13.6	-0.4	44.4
1972	29028	433	424	9	18	14.9	14.6	0.3	41.6
1973	28962	419	347	72	5	14.5	12.0	2.5	11.9
1974	28895	438	308	130	8	15.2	10.7	4.5	18.3
1975	28829	383	338	45	9	13.3	11.7	1.6	23.5
1976	28762	418	343	75	11	14.5	11.9	2.6	26.3
1977	28695	339	368	-29	7	11.8	12.8	-1.0	20.6
1978	28629	318	322	-4	3	11.1	11.2	-0.1	9.4
1979	28562	302	327	-25	9	10.6	11.4	-0.8	29.8
1980	28496	306	363	-57	6	10.7	12.7	-2.0	19.6
1981	28429	290	356	-66	1	10.2	12.5	-2.3	3.4
1982	28151	300	349	-49	3	10.7	12.4	-1.7	10.0
1983	27873	286	419	-133	4	10.3	15.0	-4.7	14.0
1984	27594	308	356	-48	7	11.2	12.9	-1.7	22.7
1985	27317	327	380	-53	3	12.0	13.9	-1.9	9.2
1986	27038	300	347	-47	4	11.1	12.8	-1.7	13.3
1987	26761	319	367	-48	4	11.9	13.7	-1.8	12.5
1988	26483	311	325	-14	6	11.7	12.3	-0.6	19.3
1989	26205	274	357	-83	4	10.5	13.6	-3.1	14.6
1990	25927	319	394	-75	4	12.3	15.2	-2.9	12.5
1991	25649	307	334	-27	3	12.0	13.0	-1.0	9.8
1992	25579	253	341	-88	1	9.9	13.3	-3.4	4.0
1993	25508	351	342	9	3	13.8	13.4	0.4	8.5
1994	25438	335	323	12	1	13.2	12.7	0.5	3.0
1995	25368	313	361	-48	6	12.3	14.2	-1.9	19.2
1996	25298	229	316	-87	3	9.1	12.5	-3.4	13.1
1997	25226	371	381	-10	2	14.7	15.1	-0.4	5.4
1998	25157	257	326	-69	0	10.2	13.0	-2.8	0.0
1999	25087	264	329	-65	2	10.5	13.1	-2.6	7.6
2000	25017	233	364	-131	2	9.3	14.6	-5.3	8.6
2001	24946	223	353	-130	1	8.9	14.2	-5.3	4.5
2002	18792	197	349	-152	2	10.5	18.6	-8.1	10.2
2003	18583	230	388	-158	0	12.4	20.9	-8.5	0.0
2004	18373	184	347	-163	0	10.0	18.9	-8.9	0.0
2005	18127	107	344	-237	2	5.9	19.0	-13.1	18.7

Table. Natural changes of population, Kučevo

Year	Number of population	Livebirths	Deaths	Natural increase	Infants deaths	per 1000 population			Infant deaths per 1000 livebirths
						Livebirths	Deaths	Natural increase	
2006	17825	105	349	-244	0	5.9	19.6	-13.7	0.0
2007	17497	100	365	-265	0	5.7	20.9	-15.2	0.0
2008	17133	74	382	-308	0	4.3	22.3	-18.0	0.0
2009	16738	99	366	-267	0	5.9	21.9	-16.0	0.0
2010	16346	89	382	-293	3	5.4	23.4	-17.9	33.7
2011	15548	69	361	-292	0	4.4	23.2	-18.8	0.0
2012	15201	82	356	-274	1	5.4	23.4	-18.0	12.2
2013	14852	85	369	-284	0	5.7	24.8	-19.1	0.0
2014	14515	65	333	-268	1	4.5	22.9	-18.5	15.4
2015	14192	73	369	-296	2	5.1	26.0	-20.9	27.4
2016	13851	65	375	-310	0	4.7	27.1	-22.4	0.0
2017	13551	75	301	-226	0	5.5	22.2	-16.7	0.0
2018	13273	68	326	-258	0	5.1	24.6	-19.4	0.0
2019	12954	74	309	-235	2	5.7	23.9	-18.2	27.0
2020	12641	68	331	-263	1	5.4	26.2	-20.8	14.7
2021	12317	77	365	-288	2	6.3	29.6	-23.4	26.0
2022	11885	63	293	-230	1	5.3	24.7	-19.4	15.9

Source: Vital Statistics, SORS

Definitions

Population size

Number of population in the respective year. The data on the number of population in 1961, 1971, 1981 and 1991 are census data, while for the inter-census years the number of population was calculated as an average inter-census difference. From 2002 are given the population estimates that were calculated according to the census of population results and the annual statistics of natural mechanical population movements.

Livebirths

Absolute number of live births in the course of a year. Live born child means a child giving vital signs after birth (breathing, i.e. heartbeat), even for the shortest time, regardless the mother's pregnancy duration.

Deaths

Absolute number of deaths in the course of a year. Deceased is a person that whenever after having been born live, shows permanently stopped vital signs.

Natural increase

Natural population increase is the number of live births minus the number of deaths.

Infants deaths

Absolute number of infants deaths in the course of a year. Deceased infant is a child that after having been born live and before aged one year, shows permanently stopped vital signs.

Livebirths, per 1 000 population

Livebirths rate is the ratio of the number of live births and the population size in the respective year. The number of live births is divided by the population size and then multiplied by 1000.

Deaths, per 1 000 population

General mortality rate represents the ratio between the number of deaths and the population size in the respective year. The number of deaths is divided by population size and then multiplied by 1000.

Natural increase, per 1 000 population

Natural population increase rate is the difference between the number of live births and the number of deaths, in relation to the population size in the respective year.

Natural population increase rate = (number of live births - number of deaths) / population size * 1000

Infants deaths, per 1 000 livebirths

Infant mortality rate is the ratio of deceased children under 1 year of age and live births in the respective year. The mortality rate is expressed per 1000 live births.

Infant mortality rate = (number of deceased children under 1 year of age / number of live births) * 1000

Additional info:



Download all database data in Excel format:

[Data](#)



DevInfo profiles:

devinfo.stat.gov.rs/SerbiaProfileLauncher/?lang=en



DevInfo online database:

devinfo.stat.gov.rs/vitalna



For additional information or questions please contact:

devinfo@stat.gov.rs