

# Natural changes of population 1961 – 2022

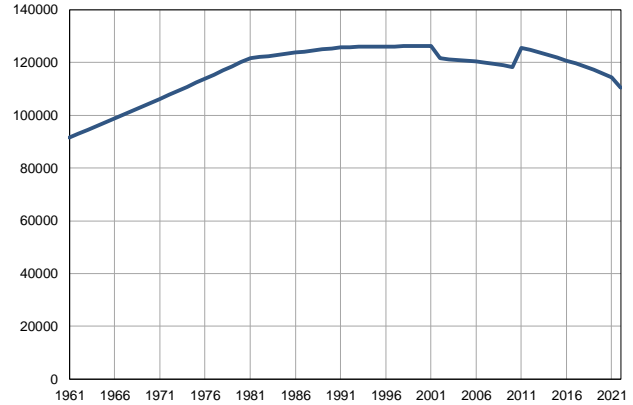
Profile  
July 2023

## Kraljevo

	1961	2022
Population size	91579	110545
Livebirths, Number	1472	974
Deaths, Number	627	1837
Natural increase, Number	845	-863
Infants deaths, Number	73	3
Livebirths, per 1,000 population	16	9
Deaths, per 1,000 population	7	17
Natural increase, per 1,000 population	9	-8
Infants deaths, per 1,000 livebirths	50	3

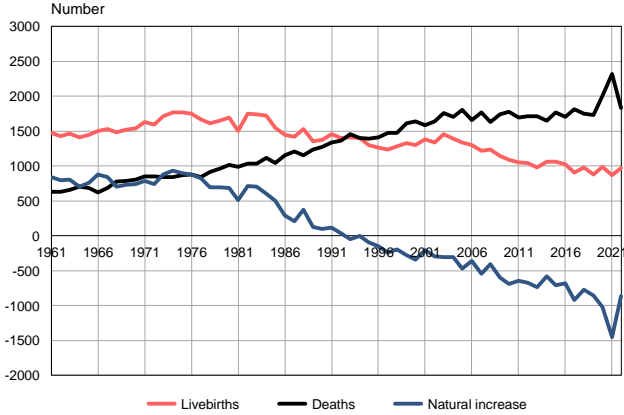
Source: Vital Statistics, SORS

Population size, 1961–2022



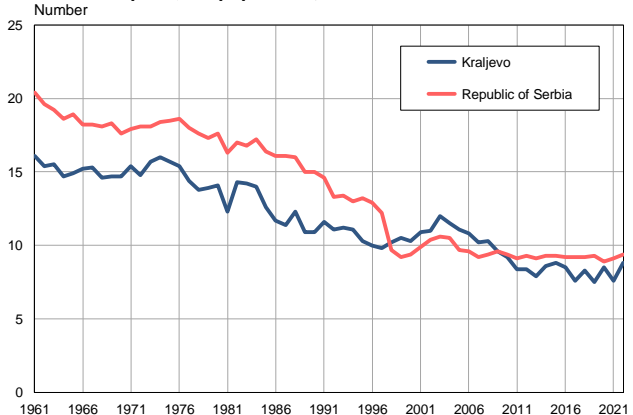
Source: Vital Statistics, SORS

Livebirths, deaths and natural increase, 1961–2022



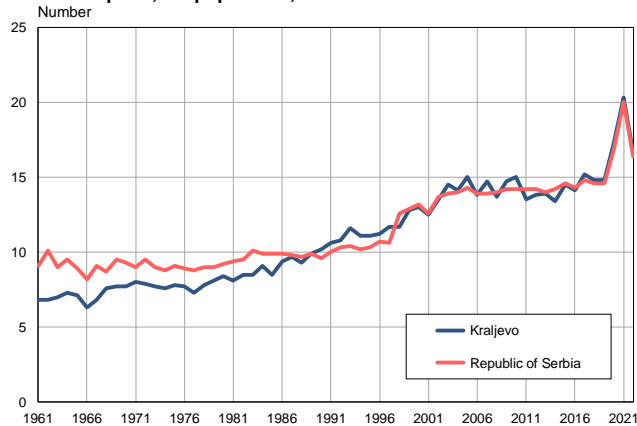
Source: Vital Statistics, SORS

Livebirths per 1,000 population, 1961–2022



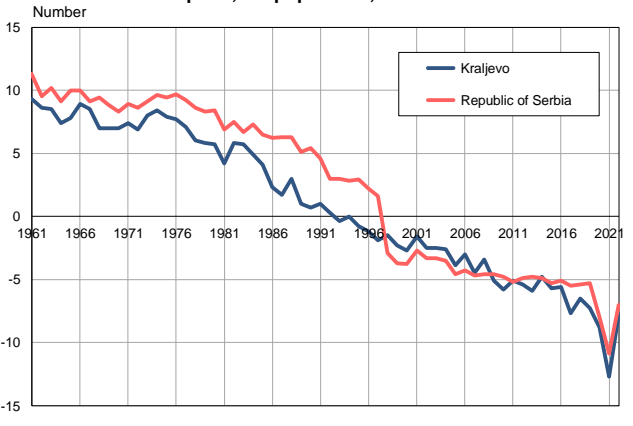
Source: Vital Statistics, SORS

Deaths per 1,000 population, 1961–2022



Source: Vital Statistics, SORS

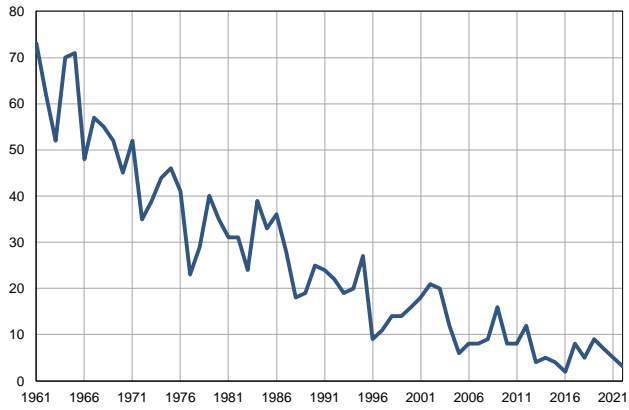
Natural increase per 1,000 population, 1961–2022



Source: Vital Statistics, SORS

**Infants deaths, 1961–2022**

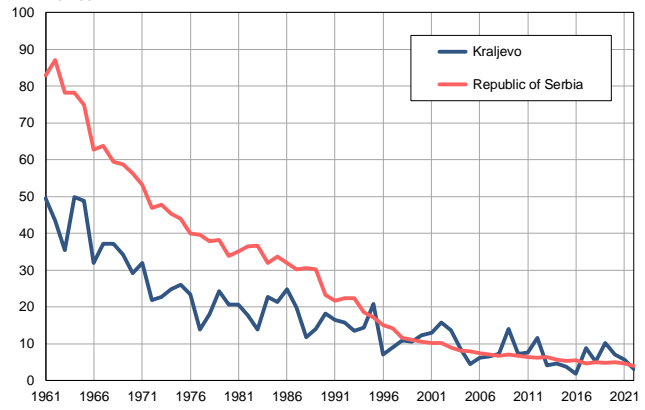
Number



Source: Vital Statistics, SORS

**Infants deaths per 1,000 livebirths, 1961–2022**

Number



Source: Vital Statistics, SORS

**Table. Natural changes of population, Kraljevo**

Year	Number of population	Livebirths	Deaths	Natural increase	Infants deaths	per 1000 population			Infant deaths per 1000 livebirths
						Livebirths	Deaths	Natural increase	
1961	91579	1472	627	845	73	16.1	6.8	9.3	49.6
1962	93036	1429	635	794	62	15.4	6.8	8.6	43.4
1963	94494	1466	662	804	52	15.5	7.0	8.5	35.5
1964	95951	1407	705	702	70	14.7	7.3	7.4	49.8
1965	97409	1452	688	764	71	14.9	7.1	7.8	48.9
1966	98866	1506	623	883	48	15.2	6.3	8.9	31.9
1967	100323	1532	687	845	57	15.3	6.8	8.5	37.2
1968	101781	1481	775	706	55	14.6	7.6	7.0	37.1
1969	103238	1520	790	730	52	14.7	7.7	7.0	34.2
1970	104696	1543	805	738	45	14.7	7.7	7.0	29.2
1971	106153	1632	847	785	52	15.4	8.0	7.4	31.9
1972	107700	1595	852	743	35	14.8	7.9	6.9	21.9
1973	109247	1715	839	876	39	15.7	7.7	8.0	22.7
1974	110794	1773	839	934	44	16.0	7.6	8.4	24.8
1975	112341	1765	872	893	46	15.7	7.8	7.9	26.1
1976	113888	1754	875	879	41	15.4	7.7	7.7	23.4
1977	115434	1668	841	827	23	14.4	7.3	7.1	13.8
1978	116981	1611	912	699	29	13.8	7.8	6.0	18.0
1979	118528	1653	957	696	40	13.9	8.1	5.8	24.2
1980	120075	1698	1013	685	35	14.1	8.4	5.7	20.6
1981	121622	1502	986	516	31	12.3	8.1	4.2	20.6
1982	122037	1747	1036	711	31	14.3	8.5	5.8	17.7
1983	122452	1740	1039	701	24	14.2	8.5	5.7	13.8
1984	122867	1720	1118	602	39	14.0	9.1	4.9	22.7
1985	123282	1551	1047	504	33	12.6	8.5	4.1	21.3
1986	123697	1449	1157	292	36	11.7	9.4	2.3	24.8
1987	124113	1417	1206	211	28	11.4	9.7	1.7	19.8
1988	124528	1527	1153	374	18	12.3	9.3	3.0	11.8
1989	124942	1358	1235	123	19	10.9	9.9	1.0	14.0
1990	125357	1371	1274	97	25	10.9	10.2	0.7	18.2
1991	125772	1455	1339	116	24	11.6	10.6	1.0	16.5
1992	125826	1399	1364	35	22	11.1	10.8	0.3	15.7
1993	125880	1408	1454	-46	19	11.2	11.6	-0.4	13.5
1994	125933	1400	1401	-1	20	11.1	11.1	0.0	14.3
1995	125987	1299	1393	-94	27	10.3	11.1	-0.8	20.8
1996	126041	1266	1413	-147	9	10.0	11.2	-1.2	7.1
1997	126095	1235	1475	-240	11	9.8	11.7	-1.9	8.9
1998	126149	1281	1475	-194	14	10.2	11.7	-1.5	10.9
1999	126203	1331	1612	-281	14	10.5	12.8	-2.3	10.5
2000	126256	1304	1642	-338	16	10.3	13.0	-2.7	12.3
2001	126310	1380	1583	-203	18	10.9	12.5	-1.6	13.0
2002	121609	1339	1636	-297	21	11.0	13.5	-2.5	15.7
2003	121225	1455	1762	-307	20	12.0	14.5	-2.5	13.7
2004	120971	1397	1706	-309	12	11.5	14.1	-2.6	8.6
2005	120625	1340	1807	-467	6	11.1	15.0	-3.9	4.5

**Table. Natural changes of population, Kraljevo**

Year	Number of population	Livebirths	Deaths	Natural increase	Infants deaths	per 1000 population			Infant deaths per 1000 livebirths
						Livebirths	Deaths	Natural increase	
2006	120304	1297	1657	-360	8	10.8	13.8	-3.0	6.2
2007	119994	1220	1767	-547	8	10.2	14.7	-4.5	6.6
2008	119517	1232	1635	-403	9	10.3	13.7	-3.4	7.3
2009	118959	1145	1744	-599	16	9.6	14.7	-5.1	14.0
2010	118343	1090	1778	-688	8	9.2	15.0	-5.8	7.3
2011	125460	1056	1699	-643	8	8.4	13.5	-5.1	7.6
2012	124679	1048	1716	-668	12	8.4	13.8	-5.4	11.5
2013	123724	983	1716	-733	4	7.9	13.9	-5.9	4.1
2014	122782	1062	1646	-584	5	8.6	13.4	-4.8	4.7
2015	121766	1066	1771	-705	4	8.8	14.5	-5.7	3.8
2016	120722	1026	1705	-679	2	8.5	14.1	-5.6	1.9
2017	119585	904	1819	-915	8	7.6	15.2	-7.7	8.8
2018	118363	979	1750	-771	5	8.3	14.8	-6.5	5.1
2019	117168	882	1733	-851	9	7.5	14.8	-7.3	10.2
2020	115921	987	2008	-1021	7	8.5	17.3	-8.8	7.1
2021	114424	870	2320	-1450	5	7.6	20.3	-12.7	5.7
2022	110545	974	1837	-863	3	8.8	16.6	-7.8	3.1

Source: Vital Statistics, SORS

## Definitions

### Population size

Number of population in the respective year. The data on the number of population in 1961, 1971, 1981 and 1991 are census data, while for the inter-census years the number of population was calculated as an average inter-census difference. From 2002 are given the population estimates that were calculated according to the census of population results and the annual statistics of natural mechanical population movements.

### Livebirths

Absolute number of live births in the course of a year. Live born child means a child giving vital signs after birth (breathing, i.e. heartbeat), even for the shortest time, regardless the mother's pregnancy duration.

### Deaths

Absolute number of deaths in the course of a year. Deceased is a person that whenever after having been born live, shows permanently stopped vital signs.

### Natural increase

Natural population increase is the number of live births minus the number of deaths.

### Infants deaths

Absolute number of infants deaths in the course of a year. Deceased infant is a child that after having been born live and before aged one year, shows permanently stopped vital signs.

### Livebirths, per 1 000 population

Livebirths rate is the ratio of the number of live births and the population size in the respective year. The number of live births is divided by the population size and then multiplied by 1000.

### Deaths, per 1 000 population

General mortality rate represents the ratio between the number of deaths and the population size in the respective year. The number of deaths is divided by population size and then multiplied by 1000.

### Natural increase, per 1 000 population

Natural population increase rate is the difference between the number of live births and the number of deaths, in relation to the population size in the respective year.

Natural population increase rate = (number of live births - number of deaths) / population size \* 1000

### Infants deaths, per 1 000 livebirths

Infant mortality rate is the ratio of deceased children under 1 year of age and live births in the respective year. The mortality rate is expressed per 1000 live births.

Infant mortality rate = (number of deceased children under 1 year of age / number of live births) \* 1000

## Additional info:



Download all database data in Excel format:

[Data](#)



DevInfo profiles:

[devinfo.stat.gov.rs/SerbiaProfileLauncher/?lang=en](http://devinfo.stat.gov.rs/SerbiaProfileLauncher/?lang=en)



DevInfo online database:

[devinfo.stat.gov.rs/vitalna](http://devinfo.stat.gov.rs/vitalna)



For additional information or questions please contact:

[devinfo@stat.gov.rs](mailto:devinfo@stat.gov.rs)