

# Natural changes of population 1961 – 2022

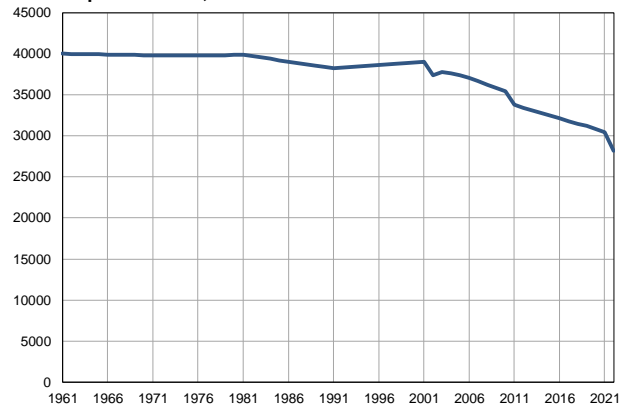
Profile  
July 2023

## Kovin

	1961	2022
Population size	39994	28201
Livebirths, Number	675	283
Deaths, Number	400	526
Natural increase, Number	275	-243
Infants deaths, Number	49	3
Livebirths, per 1,000 population	17	10
Deaths, per 1,000 population	10	19
Natural increase, per 1,000 population	7	-9
Infants deaths, per 1,000 livebirths	73	11

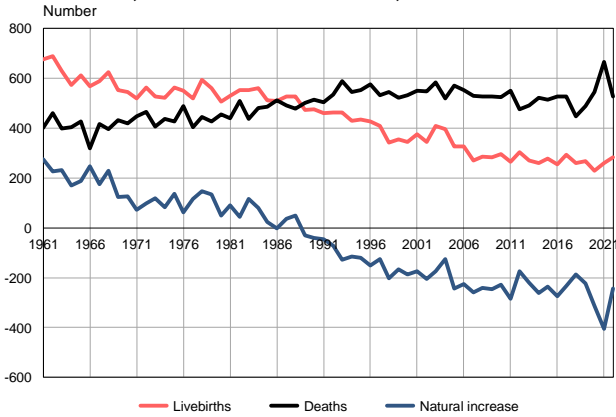
Source: Vital Statistics, SORS

Population size, 1961–2022



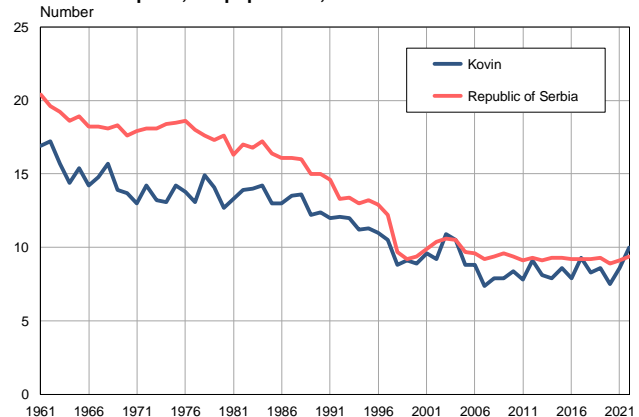
Source: Vital Statistics, SORS

Livebirths, deaths and natural increase, 1961–2022



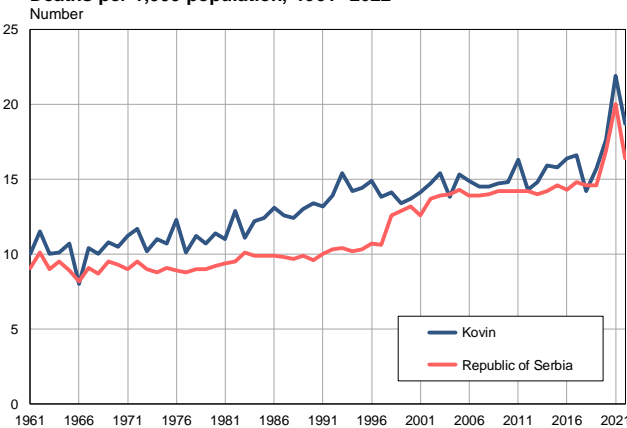
Source: Vital Statistics, SORS

Livebirths per 1,000 population, 1961–2022



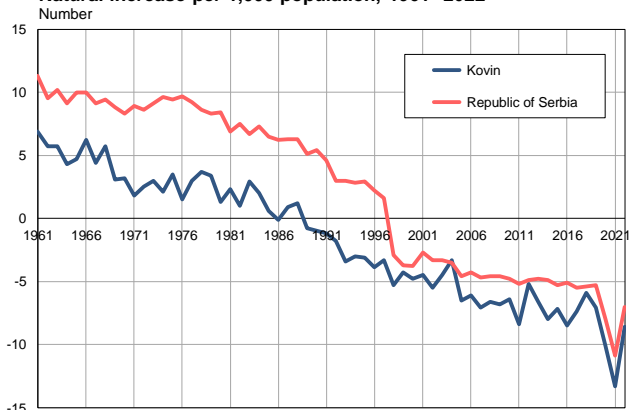
Source: Vital Statistics, SORS

Deaths per 1,000 population, 1961–2022



Source: Vital Statistics, SORS

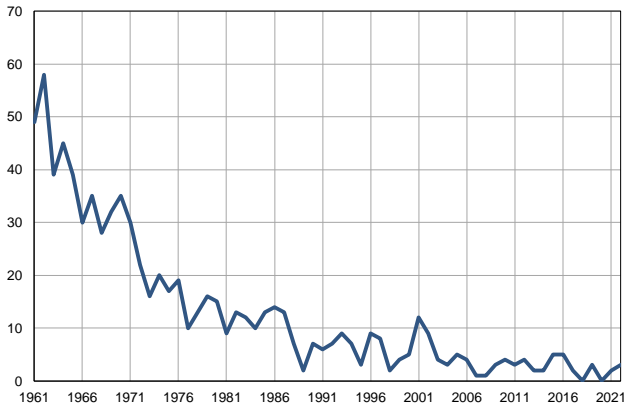
Natural increase per 1,000 population, 1961–2022



Source: Vital Statistics, SORS

**Infants deaths, 1961–2022**

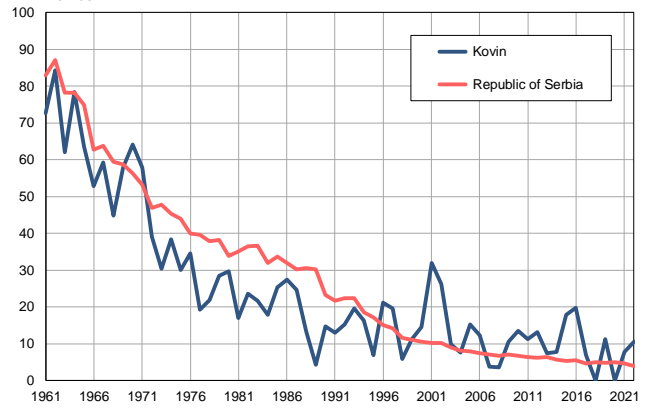
Number



Source: Vital Statistics, SORS

**Infants deaths per 1,000 livebirths, 1961–2022**

Number



Source: Vital Statistics, SORS

**Table. Natural changes of population, Kovin**

Year	Number of population	Livebirths	Deaths	Natural increase	Infants deaths	per 1000 population			Infant deaths per 1000 livebirths
						Livebirths	Deaths	Natural increase	
1961	39994	675	400	275	49	16.9	10.0	6.9	72.6
1962	39975	688	461	227	58	17.2	11.5	5.7	84.3
1963	39957	629	398	231	39	15.7	10.0	5.7	62.0
1964	39938	574	405	169	45	14.4	10.1	4.3	78.4
1965	39920	613	426	187	39	15.4	10.7	4.7	63.6
1966	39900	568	320	248	30	14.2	8.0	6.2	52.8
1967	39882	590	416	174	35	14.8	10.4	4.4	59.3
1968	39864	625	397	228	28	15.7	10.0	5.7	44.8
1969	39845	554	431	123	32	13.9	10.8	3.1	57.8
1970	39827	546	420	126	35	13.7	10.5	3.2	64.1
1971	39808	519	447	72	30	13.0	11.2	1.8	57.8
1972	39811	564	465	99	22	14.2	11.7	2.5	39.0
1973	39815	526	407	119	16	13.2	10.2	3.0	30.4
1974	39818	522	438	84	20	13.1	11.0	2.1	38.3
1975	39822	564	427	137	17	14.2	10.7	3.5	30.1
1976	39826	550	489	61	19	13.8	12.3	1.5	34.5
1977	39829	520	403	117	10	13.1	10.1	3.0	19.2
1978	39833	593	445	148	13	14.9	11.2	3.7	21.9
1979	39835	561	428	133	16	14.1	10.7	3.4	28.5
1980	39840	506	456	50	15	12.7	11.4	1.3	29.6
1981	39843	530	440	90	9	13.3	11.0	2.3	17.0
1982	39685	553	510	43	13	13.9	12.9	1.0	23.5
1983	39527	553	438	115	12	14.0	11.1	2.9	21.7
1984	39369	561	482	79	10	14.2	12.2	2.0	17.8
1985	39211	511	487	24	13	13.0	12.4	0.6	25.4
1986	39052	509	511	-2	14	13.0	13.1	-0.1	27.5
1987	38895	526	490	36	13	13.5	12.6	0.9	24.7
1988	38737	528	479	49	7	13.6	12.4	1.2	13.3
1989	38579	472	501	-29	2	12.2	13.0	-0.8	4.2
1990	38421	475	515	-40	7	12.4	13.4	-1.0	14.7
1991	38263	460	505	-45	6	12.0	13.2	-1.2	13.0
1992	38339	462	534	-72	7	12.1	13.9	-1.8	15.2
1993	38414	462	590	-128	9	12.0	15.4	-3.4	19.5
1994	38491	430	546	-116	7	11.2	14.2	-3.0	16.3
1995	38566	434	554	-120	3	11.3	14.4	-3.1	6.9
1996	38642	426	576	-150	9	11.0	14.9	-3.9	21.1
1997	38716	408	533	-125	8	10.5	13.8	-3.3	19.6
1998	38792	343	546	-203	2	8.8	14.1	-5.3	5.8
1999	38867	354	521	-167	4	9.1	13.4	-4.3	11.3
2000	38943	346	532	-186	5	8.9	13.7	-4.8	14.5
2001	39018	375	550	-175	12	9.6	14.1	-4.5	32.0
2002	37365	344	548	-204	9	9.2	14.7	-5.5	26.2
2003	37757	410	583	-173	4	10.9	15.4	-4.5	9.8
2004	37629	395	519	-124	3	10.5	13.8	-3.3	7.6
2005	37418	328	571	-243	5	8.8	15.3	-6.5	15.2

**Table. Natural changes of population, Kovin**

Year	Number of population	Livebirths	Deaths	Natural increase	Infants deaths	per 1000 population			Infant deaths per 1000 livebirths
						Livebirths	Deaths	Natural increase	
2006	37076	326	552	-226	4	8.8	14.9	-6.1	12.3
2007	36650	270	530	-260	1	7.4	14.5	-7.1	3.7
2008	36214	286	526	-240	1	7.9	14.5	-6.6	3.5
2009	35827	282	527	-245	3	7.9	14.7	-6.8	10.6
2010	35436	297	524	-227	4	8.4	14.8	-6.4	13.5
2011	33770	265	550	-285	3	7.8	16.3	-8.4	11.3
2012	33399	303	476	-173	4	9.1	14.3	-5.2	13.2
2013	33130	270	490	-220	2	8.1	14.8	-6.6	7.4
2014	32808	260	522	-262	2	7.9	15.9	-8.0	7.7
2015	32480	279	514	-235	5	8.6	15.8	-7.2	17.9
2016	32125	254	528	-274	5	7.9	16.4	-8.5	19.7
2017	31761	294	528	-234	2	9.3	16.6	-7.4	6.8
2018	31474	260	447	-187	0	8.3	14.2	-5.9	0.0
2019	31194	267	489	-222	3	8.6	15.7	-7.1	11.2
2020	30852	230	544	-314	0	7.5	17.6	-10.1	0.0
2021	30459	261	667	-406	2	8.6	21.9	-13.3	7.7
2022	28201	283	526	-243	3	10.0	18.7	-8.6	10.6

Source: Vital Statistics, SORS

## Definitions

### Population size

Number of population in the respective year. The data on the number of population in 1961, 1971, 1981 and 1991 are census data, while for the inter-census years the number of population was calculated as an average inter-census difference. From 2002 are given the population estimates that were calculated according to the census of population results and the annual statistics of natural mechanical population movements.

### Livebirths

Absolute number of live births in the course of a year. Live born child means a child giving vital signs after birth (breathing, i.e. heartbeat), even for the shortest time, regardless the mother's pregnancy duration.

### Deaths

Absolute number of deaths in the course of a year. Deceased is a person that whenever after having been born live, shows permanently stopped vital signs.

### Natural increase

Natural population increase is the number of live births minus the number of deaths.

### Infants deaths

Absolute number of infants deaths in the course of a year. Deceased infant is a child that after having been born live and before aged one year, shows permanently stopped vital signs.

### Livebirths, per 1 000 population

Livebirths rate is the ratio of the number of live births and the population size in the respective year. The number of live births is divided by the population size and then multiplied by 1000.

### Deaths, per 1 000 population

General mortality rate represents the ratio between the number of deaths and the population size in the respective year. The number of deaths is divided by population size and then multiplied by 1000.

### Natural increase, per 1 000 population

Natural population increase rate is the difference between the number of live births and the number of deaths, in relation to the population size in the respective year.

Natural population increase rate = (number of live births - number of deaths) / population size \* 1000

### Infants deaths, per 1 000 livebirths

Infant mortality rate is the ratio of deceased children under 1 year of age and live births in the respective year. The mortality rate is expressed per 1000 live births.

Infant mortality rate = (number of deceased children under 1 year of age / number of live births) \* 1000

## Additional info:



Download all database data in Excel format:

[Data](#)



DevInfo profiles:

[devinfo.stat.gov.rs/SerbiaProfileLauncher/?lang=en](http://devinfo.stat.gov.rs/SerbiaProfileLauncher/?lang=en)



DevInfo online database:

[devinfo.stat.gov.rs/vitalna](http://devinfo.stat.gov.rs/vitalna)



For additional information or questions please contact:

[devinfo@stat.gov.rs](mailto:devinfo@stat.gov.rs)