

# Natural changes of population 1961 – 2022

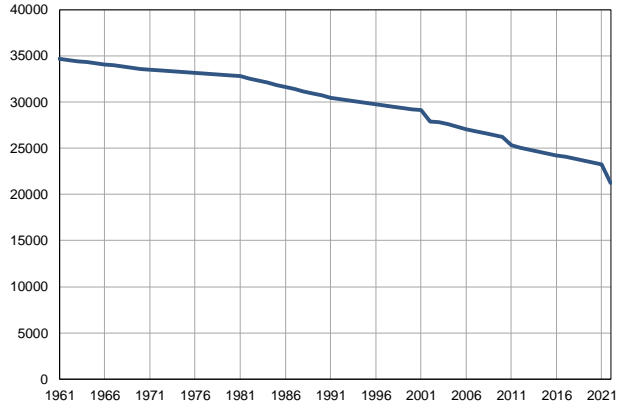
Profile  
July 2023

## Kovačica

	1961	2022
Population size	34654	21262
Livebirths, Number	580	189
Deaths, Number	398	419
Natural increase, Number	182	-230
Infants deaths, Number	52	0
Livebirths, per 1,000 population	17	9
Deaths, per 1,000 population	12	20
Natural increase, per 1,000 population	5	-11
Infants deaths, per 1,000 livebirths	90	0

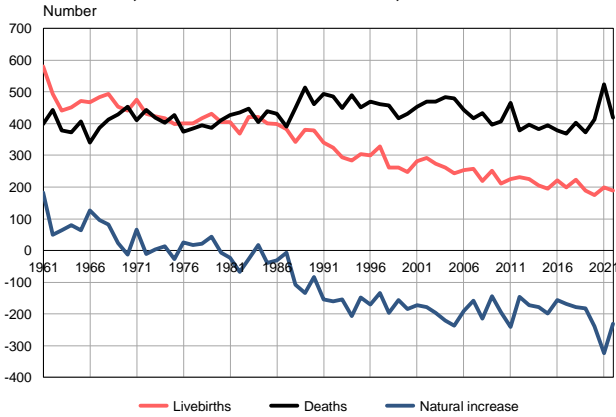
Source: Vital Statistics, SORS

Population size, 1961–2022



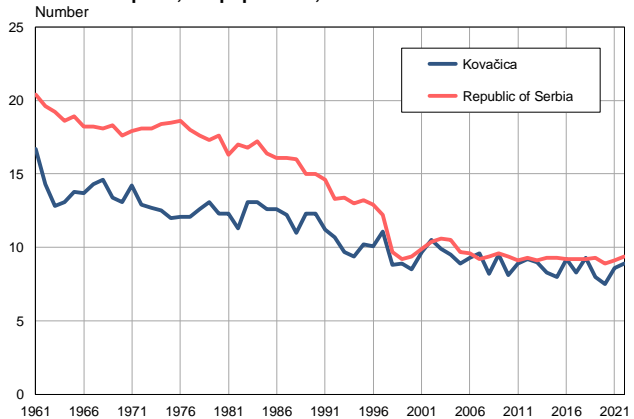
Source: Vital Statistics, SORS

Livebirths, deaths and natural increase, 1961–2022



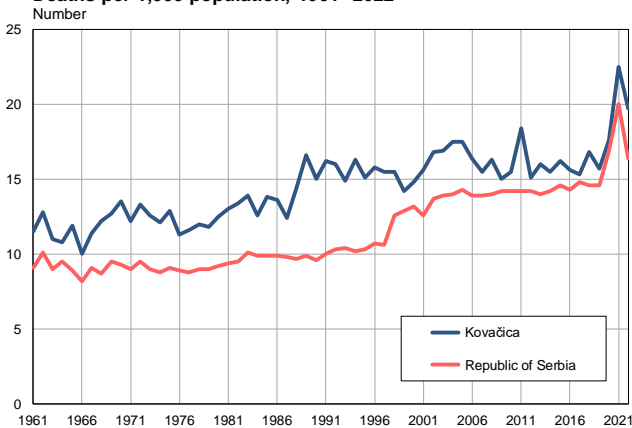
Source: Vital Statistics, SORS

Livebirths per 1,000 population, 1961–2022



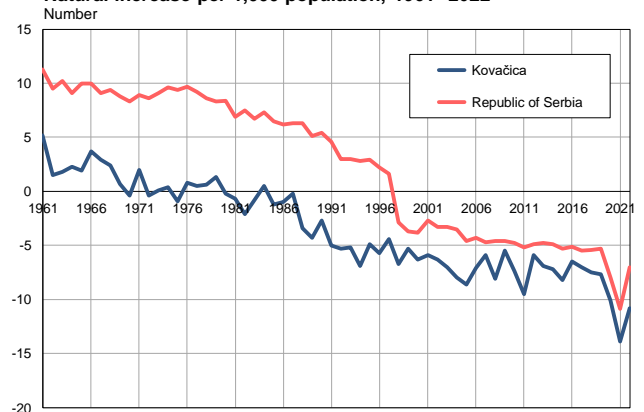
Source: Vital Statistics, SORS

Deaths per 1,000 population, 1961–2022



Source: Vital Statistics, SORS

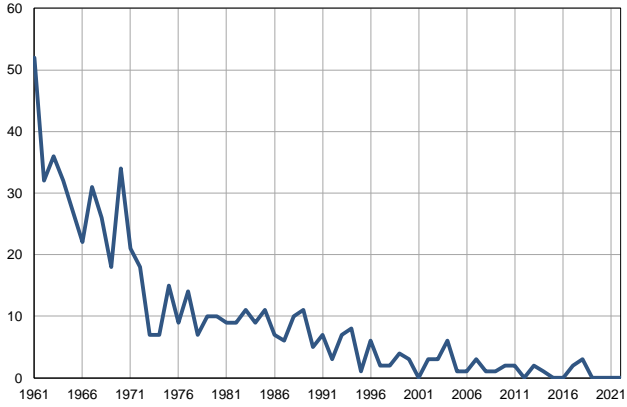
Natural increase per 1,000 population, 1961–2022



Source: Vital Statistics, SORS

**Infants deaths, 1961–2022**

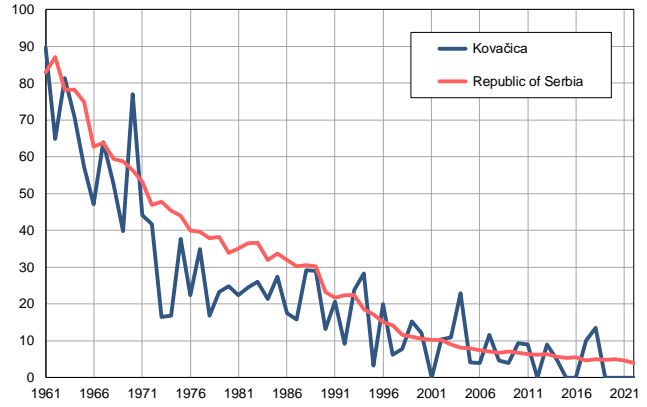
Number



Source: Vital Statistics, SORS

**Infants deaths per 1,000 livebirths, 1961–2022**

Number



Source: Vital Statistics, SORS

**Table. Natural changes of population, Kovačica**

Year	Number of population	Livebirths	Deaths	Natural increase	Infants deaths	per 1000 population			Infant deaths per 1000 livebirths
						Livebirths	Deaths	Natural increase	
1961	34654	580	398	182	52	16.7	11.5	5.2	89.7
1962	34538	493	443	50	32	14.3	12.8	1.5	64.9
1963	34422	442	379	63	36	12.8	11.0	1.8	81.4
1964	34305	451	372	79	32	13.1	10.8	2.3	71.0
1965	34188	471	407	64	27	13.8	11.9	1.9	57.3
1966	34071	467	340	127	22	13.7	10.0	3.7	47.1
1967	33955	484	387	97	31	14.3	11.4	2.9	64.0
1968	33839	493	412	81	26	14.6	12.2	2.4	52.7
1969	33722	453	429	24	18	13.4	12.7	0.7	39.7
1970	33606	441	454	-13	34	13.1	13.5	-0.4	77.1
1971	33489	475	410	65	21	14.2	12.2	2.0	44.2
1972	33420	432	443	-11	18	12.9	13.3	-0.4	41.7
1973	33352	423	419	4	7	12.7	12.6	0.1	16.5
1974	33282	416	402	14	7	12.5	12.1	0.4	16.8
1975	33213	399	427	-28	15	12.0	12.9	-0.9	37.6
1976	33144	401	375	26	9	12.1	11.3	0.8	22.4
1977	33073	401	384	17	14	12.1	11.6	0.5	34.9
1978	33005	416	395	21	7	12.6	12.0	0.6	16.8
1979	32936	431	387	44	10	13.1	11.8	1.3	23.2
1980	32867	404	411	-7	10	12.3	12.5	-0.2	24.8
1981	32798	404	427	-23	9	12.3	13.0	-0.7	22.3
1982	32565	369	436	-67	9	11.3	13.4	-2.1	24.4
1983	32332	422	448	-26	11	13.1	13.9	-0.8	26.1
1984	32099	421	404	17	9	13.1	12.6	0.5	21.4
1985	31866	400	440	-40	11	12.6	13.8	-1.2	27.5
1986	31634	399	431	-32	7	12.6	13.6	-1.0	17.5
1987	31401	383	390	-7	6	12.2	12.4	-0.2	15.7
1988	31168	342	449	-107	10	11.0	14.4	-3.4	29.2
1989	30935	380	513	-133	11	12.3	16.6	-4.3	28.9
1990	30702	378	461	-83	5	12.3	15.0	-2.7	13.2
1991	30469	340	494	-154	7	11.2	16.2	-5.0	20.6
1992	30332	325	486	-161	3	10.7	16.0	-5.3	9.2
1993	30196	294	449	-155	7	9.7	14.9	-5.2	23.8
1994	30059	284	490	-206	8	9.4	16.3	-6.9	28.2
1995	29923	304	452	-148	1	10.2	15.1	-4.9	3.3
1996	29786	300	470	-170	6	10.1	15.8	-5.7	20.0
1997	29650	328	461	-133	2	11.1	15.5	-4.4	6.1
1998	29513	261	457	-196	2	8.8	15.5	-6.7	7.7
1999	29377	262	418	-156	4	8.9	14.2	-5.3	15.3
2000	29240	248	432	-184	3	8.5	14.8	-6.3	12.1
2001	29104	282	454	-172	0	9.7	15.6	-5.9	0.0
2002	27922	292	470	-178	3	10.5	16.8	-6.3	10.3
2003	27792	274	470	-196	3	9.9	16.9	-7.0	10.9
2004	27590	262	483	-221	6	9.5	17.5	-8.0	22.9
2005	27352	243	480	-237	1	8.9	17.5	-8.6	4.1

**Table. Natural changes of population, Kovačica**

Year	Number of population	Livebirths	Deaths	Natural increase	Infants deaths	per 1000 population			Infant deaths per 1000 livebirths
						Livebirths	Deaths	Natural increase	
2006	27081	253	444	-191	1	9.3	16.4	-7.1	4.0
2007	26867	258	417	-159	3	9.6	15.5	-5.9	11.6
2008	26662	219	434	-215	1	8.2	16.3	-8.1	4.6
2009	26447	252	397	-145	1	9.5	15.0	-5.5	4.0
2010	26247	212	406	-194	2	8.1	15.5	-7.4	9.4
2011	25310	225	465	-240	2	8.9	18.4	-9.5	8.9
2012	25056	231	378	-147	0	9.2	15.1	-5.9	0.0
2013	24864	225	397	-172	2	9.0	16.0	-6.9	8.9
2014	24650	205	383	-178	1	8.3	15.5	-7.2	4.9
2015	24443	196	395	-199	0	8.0	16.2	-8.2	0.0
2016	24249	222	379	-157	0	9.2	15.6	-6.5	0.0
2017	24054	200	368	-168	2	8.3	15.3	-7.0	10.0
2018	23874	223	402	-179	3	9.3	16.8	-7.5	13.5
2019	23696	189	372	-183	0	8.0	15.7	-7.7	0.0
2020	23489	175	413	-238	0	7.5	17.6	-10.1	0.0
2021	23218	200	523	-323	0	8.6	22.5	-13.9	0.0
2022	21262	189	419	-230	0	8.9	19.7	-10.8	0.0

Source: Vital Statistics, SORS

## Definitions

### Population size

Number of population in the respective year. The data on the number of population in 1961, 1971, 1981 and 1991 are census data, while for the inter-census years the number of population was calculated as an average inter-census difference. From 2002 are given the population estimates that were calculated according to the census of population results and the annual statistics of natural mechanical population movements.

### Livebirths

Absolute number of live births in the course of a year. Live born child means a child giving vital signs after birth (breathing, i.e. heartbeat), even for the shortest time, regardless the mother's pregnancy duration.

### Deaths

Absolute number of deaths in the course of a year. Deceased is a person that whenever after having been born live, shows permanently stopped vital signs.

### Natural increase

Natural population increase is the number of live births minus the number of deaths.

### Infants deaths

Absolute number of infants deaths in the course of a year. Deceased infant is a child that after having been born live and before aged one year, shows permanently stopped vital signs.

### Livebirths, per 1 000 population

Livebirths rate is the ratio of the number of live births and the population size in the respective year. The number of live births is divided by the population size and then multiplied by 1000.

### Deaths, per 1 000 population

General mortality rate represents the ratio between the number of deaths and the population size in the respective year. The number of deaths is divided by population size and then multiplied by 1000.

### Natural increase, per 1 000 population

Natural population increase rate is the difference between the number of live births and the number of deaths, in relation to the population size in the respective year.

Natural population increase rate = (number of live births - number of deaths) / population size \* 1000

### Infants deaths, per 1 000 livebirths

Infant mortality rate is the ratio of deceased children under 1 year of age and live births in the respective year. The mortality rate is expressed per 1000 live births.

Infant mortality rate = (number of deceased children under 1 year of age / number of live births) \* 1000

## Additional info:



Download all database data in Excel format:

[Data](#)



DevInfo profiles:

[devinfo.stat.gov.rs/SerbiaProfileLauncher/?lang=en](http://devinfo.stat.gov.rs/SerbiaProfileLauncher/?lang=en)



DevInfo online database:

[devinfo.stat.gov.rs/vitalna](http://devinfo.stat.gov.rs/vitalna)



For additional information or questions please contact:

[devinfo@stat.gov.rs](mailto:devinfo@stat.gov.rs)