

# Natural changes of population 1961 – 2022

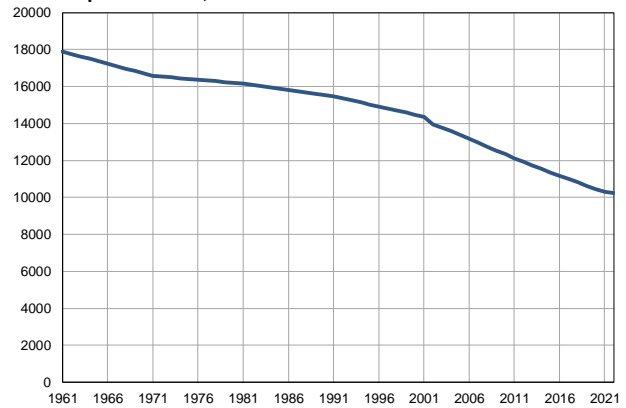
Profile  
July 2023

## Kosjerić

	1961	2022
Population size	17898	10223
Livebirths, Number	268	73
Deaths, Number	155	206
Natural increase, Number	113	-133
Infants deaths, Number	11	0
Livebirths, per 1,000 population	15	7
Deaths, per 1,000 population	9	20
Natural increase, per 1,000 population	6	-13
Infants deaths, per 1,000 livebirths	41	0

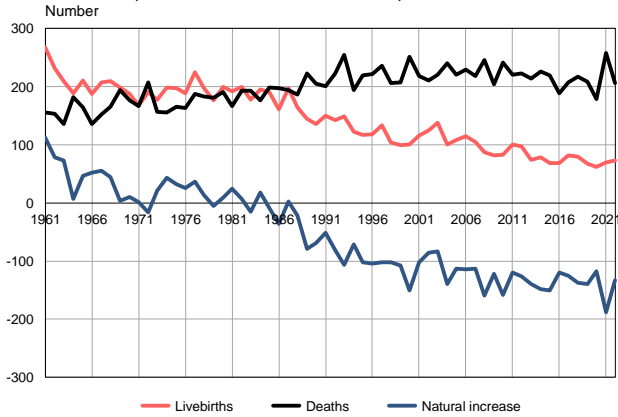
Source: Vital Statistics, SORS

Population size, 1961–2022



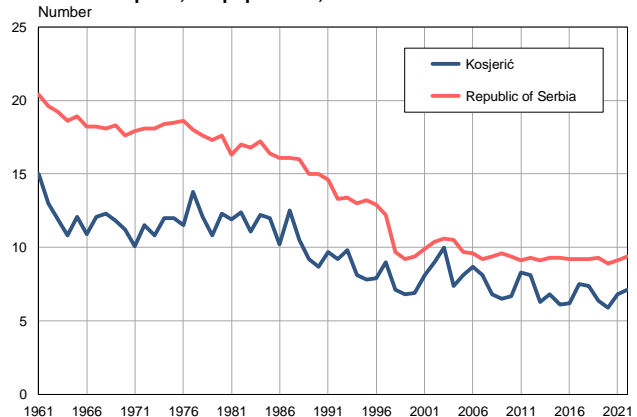
Source: Vital Statistics, SORS

Livebirths, deaths and natural increase, 1961–2022



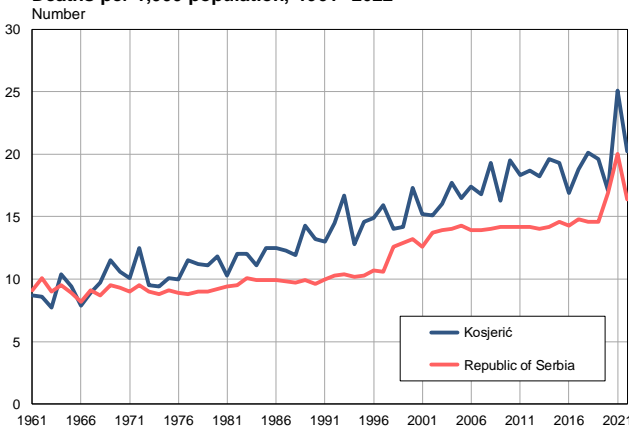
Source: Vital Statistics, SORS

Livebirths per 1,000 population, 1961–2022



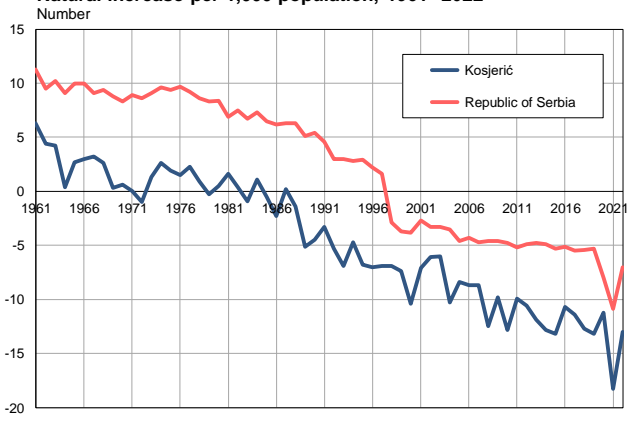
Source: Vital Statistics, SORS

Deaths per 1,000 population, 1961–2022



Source: Vital Statistics, SORS

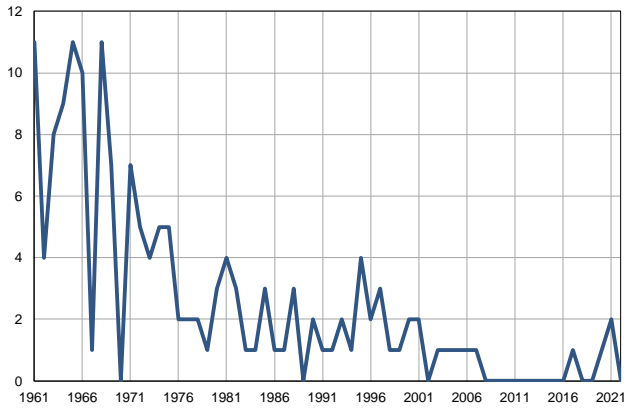
Natural increase per 1,000 population, 1961–2022



Source: Vital Statistics, SORS

**Infants deaths, 1961–2022**

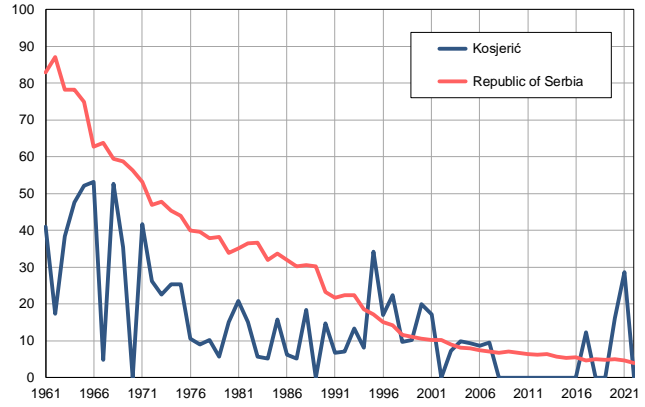
Number



Source: Vital Statistics, SORS

**Infants deaths per 1,000 livebirths, 1961–2022**

Number



Source: Vital Statistics, SORS

**Table. Natural changes of population, Kosjerić**

Year	Number of population	Livebirths	Deaths	Natural increase	Infants deaths	per 1000 population			Infant deaths per 1000 livebirths
						Livebirths	Deaths	Natural increase	
1961	17898	268	155	113	11	15.0	8.7	6.3	41.0
1962	17766	231	153	78	4	13.0	8.6	4.4	17.3
1963	17635	209	136	73	8	11.9	7.7	4.2	38.3
1964	17503	189	182	7	9	10.8	10.4	0.4	47.6
1965	17372	211	164	47	11	12.1	9.4	2.7	52.1
1966	17240	188	136	52	10	10.9	7.9	3.0	53.2
1967	17108	207	152	55	1	12.1	8.9	3.2	4.8
1968	16977	209	165	44	11	12.3	9.7	2.6	52.6
1969	16845	198	194	4	7	11.8	11.5	0.3	35.4
1970	16714	187	177	10	0	11.2	10.6	0.6	0.0
1971	16582	168	167	1	7	10.1	10.1	0.0	41.7
1972	16540	191	207	-16	5	11.5	12.5	-1.0	26.2
1973	16497	178	157	21	4	10.8	9.5	1.3	22.5
1974	16455	198	155	43	5	12.0	9.4	2.6	25.3
1975	16412	197	165	32	5	12.0	10.1	1.9	25.4
1976	16370	189	163	26	2	11.5	10.0	1.5	10.6
1977	16327	225	188	37	2	13.8	11.5	2.3	8.9
1978	16285	197	183	14	2	12.1	11.2	0.9	10.2
1979	16242	176	181	-5	1	10.8	11.1	-0.3	5.7
1980	16200	200	191	9	3	12.3	11.8	0.5	15.0
1981	16157	192	167	25	4	11.9	10.3	1.6	20.8
1982	16089	200	193	7	3	12.4	12.0	0.4	15.0
1983	16021	178	193	-15	1	11.1	12.0	-0.9	5.6
1984	15953	195	177	18	1	12.2	11.1	1.1	5.1
1985	15885	191	199	-8	3	12.0	12.5	-0.5	15.7
1986	15818	161	197	-36	1	10.2	12.5	-2.3	6.2
1987	15750	197	194	3	1	12.5	12.3	0.2	5.1
1988	15682	164	186	-22	3	10.5	11.9	-1.4	18.3
1989	15614	144	223	-79	0	9.2	14.3	-5.1	0.0
1990	15546	136	205	-69	2	8.7	13.2	-4.5	14.7
1991	15478	150	201	-51	1	9.7	13.0	-3.3	6.7
1992	15367	142	223	-81	1	9.2	14.5	-5.3	7.0
1993	15256	149	255	-106	2	9.8	16.7	-6.9	13.4
1994	15146	123	194	-71	1	8.1	12.8	-4.7	8.1
1995	15035	117	219	-102	4	7.8	14.6	-6.8	34.2
1996	14924	118	222	-104	2	7.9	14.9	-7.0	16.9
1997	14813	134	236	-102	3	9.0	15.9	-6.9	22.4
1998	14702	104	206	-102	1	7.1	14.0	-6.9	9.6
1999	14591	99	207	-108	1	6.8	14.2	-7.4	10.1
2000	14481	100	251	-151	2	6.9	17.3	-10.4	20.0
2001	14370	116	218	-102	2	8.1	15.2	-7.1	17.2
2002	13954	125	211	-86	0	9.0	15.1	-6.1	0.0
2003	13788	138	221	-83	1	10.0	16.0	-6.0	7.2
2004	13584	101	240	-139	1	7.4	17.7	-10.3	9.9
2005	13382	108	221	-113	1	8.1	16.5	-8.4	9.3

**Table. Natural changes of population, Kosjerić**

Year	Number of population	Livebirths	Deaths	Natural increase	Infants deaths	per 1000 population			Infant deaths per 1000 livebirths
						Livebirths	Deaths	Natural increase	
2006	13183	115	229	-114	1	8.7	17.4	-8.7	8.7
2007	12964	105	218	-113	1	8.1	16.8	-8.7	9.5
2008	12729	87	246	-159	0	6.8	19.3	-12.5	0.0
2009	12524	82	204	-122	0	6.5	16.3	-9.8	0.0
2010	12351	83	241	-158	0	6.7	19.5	-12.8	0.0
2011	12099	101	221	-120	0	8.3	18.3	-9.9	0.0
2012	11922	97	223	-126	0	8.1	18.7	-10.6	0.0
2013	11740	74	214	-140	0	6.3	18.2	-11.9	0.0
2014	11542	78	226	-148	0	6.8	19.6	-12.8	0.0
2015	11341	69	219	-150	0	6.1	19.3	-13.2	0.0
2016	11164	69	189	-120	0	6.2	16.9	-10.7	0.0
2017	10996	82	207	-125	1	7.5	18.8	-11.4	12.2
2018	10814	80	217	-137	0	7.4	20.1	-12.7	0.0
2019	10627	68	208	-140	0	6.4	19.6	-13.2	0.0
2020	10462	62	179	-117	1	5.9	17.1	-11.2	16.1
2021	10295	70	258	-188	2	6.8	25.1	-18.3	28.6
2022	10223	73	206	-133	0	7.1	20.2	-13.0	0.0

Source: Vital Statistics, SORS

## Definitions

### Population size

Number of population in the respective year. The data on the number of population in 1961, 1971, 1981 and 1991 are census data, while for the inter-census years the number of population was calculated as an average inter-census difference. From 2002 are given the population estimates that were calculated according to the census of population results and the annual statistics of natural mechanical population movements.

### Livebirths

Absolute number of live births in the course of a year. Live born child means a child giving vital signs after birth (breathing, i.e. heartbeat), even for the shortest time, regardless the mother's pregnancy duration.

### Deaths

Absolute number of deaths in the course of a year. Deceased is a person that whenever after having been born live, shows permanently stopped vital signs.

### Natural increase

Natural population increase is the number of live births minus the number of deaths.

### Infants deaths

Absolute number of infants deaths in the course of a year. Deceased infant is a child that after having been born live and before aged one year, shows permanently stopped vital signs.

### Livebirths, per 1 000 population

Livebirths rate is the ratio of the number of live births and the population size in the respective year. The number of live births is divided by the population size and then multiplied by 1000.

### Deaths, per 1 000 population

General mortality rate represents the ratio between the number of deaths and the population size in the respective year. The number of deaths is divided by population size and then multiplied by 1000.

### Natural increase, per 1 000 population

Natural population increase rate is the difference between the number of live births and the number of deaths, in relation to the population size in the respective year.

Natural population increase rate = (number of live births - number of deaths) / population size \* 1000

### Infants deaths, per 1 000 livebirths

Infant mortality rate is the ratio of deceased children under 1 year of age and live births in the respective year. The mortality rate is expressed per 1000 live births.

Infant mortality rate = (number of deceased children under 1 year of age / number of live births) \* 1000

## Additional info:



Download all database data in Excel format:

[Data](#)



DevInfo profiles:

[devinfo.stat.gov.rs/SerbiaProfileLauncher/?lang=en](http://devinfo.stat.gov.rs/SerbiaProfileLauncher/?lang=en)



DevInfo online database:

[devinfo.stat.gov.rs/vitalna](http://devinfo.stat.gov.rs/vitalna)



For additional information or questions please contact:

[devinfo@stat.gov.rs](mailto:devinfo@stat.gov.rs)