

Natural changes of population 1961 – 2022

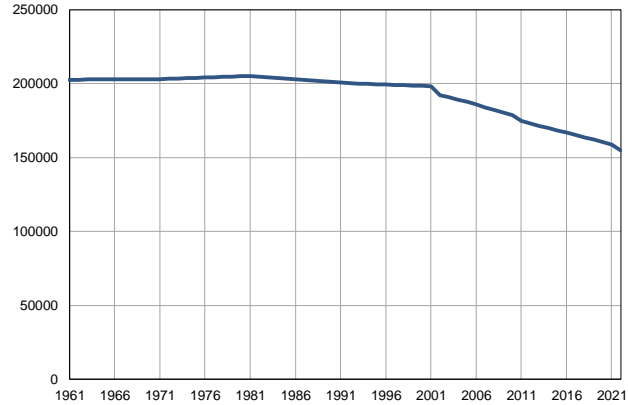
Profile
July 2023

Kolubara

	1961	2022
Population size	202630	154890
Livebirths, Number	3450	1353
Deaths, Number	1667	2760
Natural increase, Number	1783	-1407
Infants deaths, Number	196	3
Livebirths, per 1,000 population	17	9
Deaths, per 1,000 population	8	18
Natural increase, per 1,000 population	9	-9
Infants deaths, per 1,000 livebirths	57	2

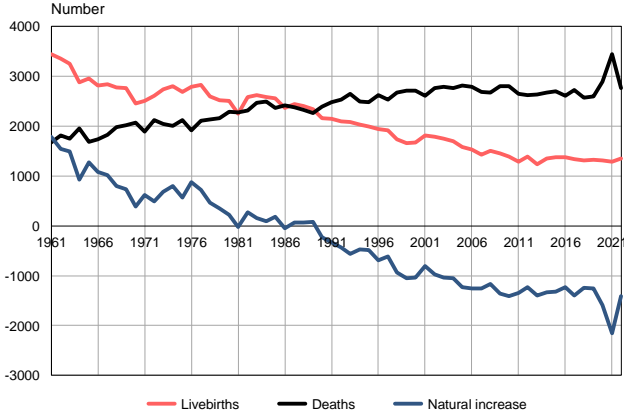
Source: Vital Statistics, SORS

Population size, 1961–2022



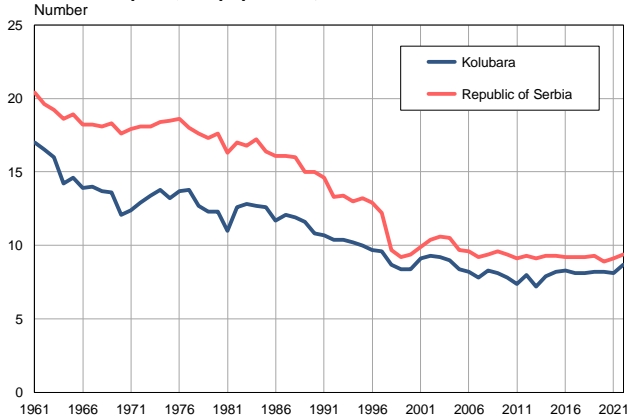
Source: Vital Statistics, SORS

Livebirths, deaths and natural increase, 1961–2022



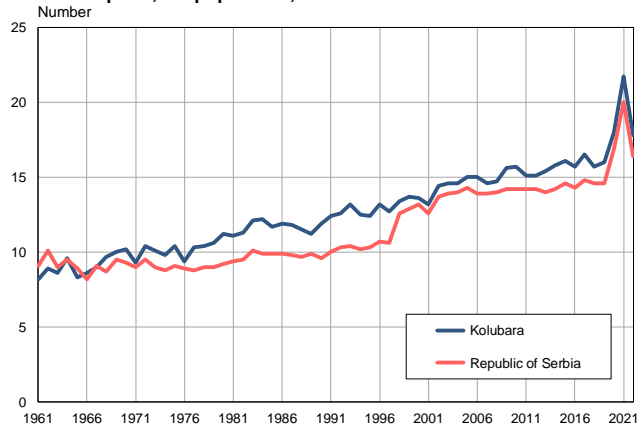
Source: Vital Statistics, SORS

Livebirths per 1,000 population, 1961–2022



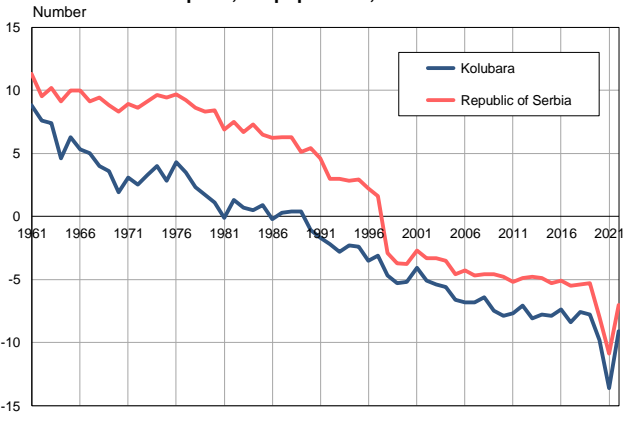
Source: Vital Statistics, SORS

Deaths per 1,000 population, 1961–2022



Source: Vital Statistics, SORS

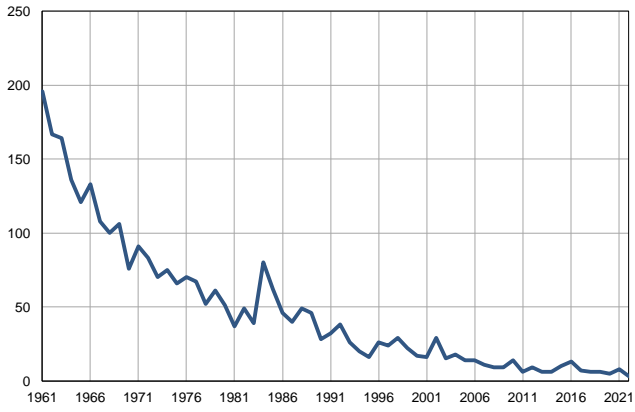
Natural increase per 1,000 population, 1961–2022



Source: Vital Statistics, SORS

Infants deaths, 1961–2022

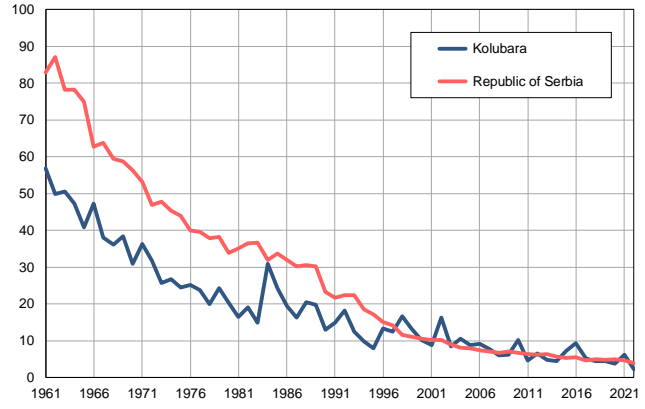
Number



Source: Vital Statistics, SORS

Infants deaths per 1,000 livebirths, 1961–2022

Number



Source: Vital Statistics, SORS

Table. Natural changes of population, Kolubara

Year	Number of population	Livebirths	Deaths	Natural increase	Infants deaths	per 1000 population			Infant deaths per 1000 livebirths
						Livebirths	Deaths	Natural increase	
1961	202630	3450	1667	1783	196	17.0	8.2	8.8	56.8
1962	202666	3351	1811	1540	167	16.5	8.9	7.6	49.8
1963	202702	3247	1753	1494	164	16.0	8.6	7.4	50.5
1964	202738	2880	1951	929	136	14.2	9.6	4.6	47.2
1965	202774	2956	1679	1277	121	14.6	8.3	6.3	40.9
1966	202810	2820	1735	1085	133	13.9	8.6	5.3	47.2
1967	202846	2842	1822	1020	108	14.0	9.0	5.0	38.0
1968	202882	2772	1976	796	100	13.7	9.7	4.0	36.1
1969	202918	2761	2024	737	106	13.6	10.0	3.6	38.4
1970	202954	2461	2077	384	76	12.1	10.2	1.9	30.9
1971	202990	2510	1885	625	91	12.4	9.3	3.1	36.3
1972	203200	2612	2119	493	83	12.9	10.4	2.5	31.8
1973	203411	2733	2047	686	70	13.4	10.1	3.3	25.6
1974	203621	2800	2005	795	75	13.8	9.8	4.0	26.8
1975	203832	2691	2117	574	66	13.2	10.4	2.8	24.5
1976	204042	2793	1915	878	70	13.7	9.4	4.3	25.1
1977	204252	2825	2109	716	67	13.8	10.3	3.5	23.7
1978	204463	2597	2131	466	52	12.7	10.4	2.3	20.0
1979	204673	2522	2166	356	61	12.3	10.6	1.7	24.2
1980	204884	2513	2290	223	51	12.3	11.2	1.1	20.3
1981	205094	2253	2274	-21	37	11.0	11.1	-0.1	16.4
1982	204641	2585	2313	272	49	12.6	11.3	1.3	19.0
1983	204187	2622	2470	152	39	12.8	12.1	0.7	14.9
1984	203734	2589	2490	99	80	12.7	12.2	0.5	30.9
1985	203280	2554	2370	184	62	12.6	11.7	0.9	24.3
1986	202827	2369	2421	-52	46	11.7	11.9	-0.2	19.4
1987	202374	2448	2380	68	40	12.1	11.8	0.3	16.3
1988	201920	2399	2329	70	49	11.9	11.5	0.4	20.4
1989	201467	2339	2259	80	46	11.6	11.2	0.4	19.7
1990	201013	2166	2389	-223	28	10.8	11.9	-1.1	12.9
1991	200560	2153	2488	-335	32	10.7	12.4	-1.7	14.9
1992	200320	2091	2530	-439	38	10.4	12.6	-2.2	18.2
1993	200081	2080	2648	-568	26	10.4	13.2	-2.8	12.5
1994	199841	2031	2497	-466	20	10.2	12.5	-2.3	9.8
1995	199602	1995	2483	-488	16	10.0	12.4	-2.4	8.0
1996	199362	1942	2628	-686	26	9.7	13.2	-3.5	13.4
1997	199123	1919	2530	-611	24	9.6	12.7	-3.1	12.5
1998	198883	1736	2673	-937	29	8.7	13.4	-4.7	16.7
1999	198644	1662	2716	-1054	22	8.4	13.7	-5.3	13.2
2000	198404	1675	2708	-1033	17	8.4	13.6	-5.2	10.1
2001	198165	1808	2610	-802	16	9.1	13.2	-4.1	8.8
2002	191996	1788	2759	-971	29	9.3	14.4	-5.1	16.2
2003	190645	1755	2789	-1034	15	9.2	14.6	-5.4	8.5
2004	189156	1704	2758	-1054	18	9.0	14.6	-5.6	10.6
2005	187629	1582	2814	-1232	14	8.4	15.0	-6.6	8.8

Table. Natural changes of population, Kolubara

Year	Number of population	Livebirths	Deaths	Natural increase	Infants deaths	per 1000 population			Infant deaths per 1000 livebirths
						Livebirths	Deaths	Natural increase	
2006	186007	1533	2793	-1260	14	8.2	15.0	-6.8	9.1
2007	184014	1429	2686	-1257	11	7.8	14.6	-6.8	7.7
2008	182015	1505	2672	-1167	9	8.3	14.7	-6.4	6.0
2009	180293	1455	2808	-1353	9	8.1	15.6	-7.5	6.2
2010	178464	1388	2803	-1415	14	7.8	15.7	-7.9	10.1
2011	174760	1293	2644	-1351	6	7.4	15.1	-7.7	4.6
2012	173108	1391	2617	-1226	9	8.0	15.1	-7.1	6.5
2013	171466	1240	2633	-1393	6	7.2	15.4	-8.1	4.8
2014	169862	1349	2676	-1327	6	7.9	15.8	-7.8	4.4
2015	168290	1383	2705	-1322	10	8.2	16.1	-7.9	7.2
2016	166795	1381	2615	-1234	13	8.3	15.7	-7.4	9.4
2017	165273	1334	2726	-1392	7	8.1	16.5	-8.4	5.2
2018	163657	1319	2566	-1247	6	8.1	15.7	-7.6	4.5
2019	162165	1330	2592	-1262	6	8.2	16.0	-7.8	4.5
2020	160558	1309	2898	-1589	5	8.2	18.0	-9.8	3.8
2021	158579	1292	3448	-2156	8	8.1	21.7	-13.6	6.2
2022	154890	1353	2760	-1407	3	8.7	17.8	-9.1	2.2

Source: Vital Statistics, SORS

Definitions

Population size

Number of population in the respective year. The data on the number of population in 1961, 1971, 1981 and 1991 are census data, while for the inter-census years the number of population was calculated as an average inter-census difference. From 2002 are given the population estimates that were calculated according to the census of population results and the annual statistics of natural mechanical population movements.

Livebirths

Absolute number of live births in the course of a year. Live born child means a child giving vital signs after birth (breathing, i.e. heartbeat), even for the shortest time, regardless the mother's pregnancy duration.

Deaths

Absolute number of deaths in the course of a year. Deceased is a person that whenever after having been born live, shows permanently stopped vital signs.

Natural increase

Natural population increase is the number of live births minus the number of deaths.

Infants deaths

Absolute number of infants deaths in the course of a year. Deceased infant is a child that after having been born live and before aged one year, shows permanently stopped vital signs.

Livebirths, per 1 000 population

Livebirths rate is the ratio of the number of live births and the population size in the respective year. The number of live births is divided by the population size and then multiplied by 1000.

Deaths, per 1 000 population

General mortality rate represents the ratio between the number of deaths and the population size in the respective year. The number of deaths is divided by population size and then multiplied by 1000.

Natural increase, per 1 000 population

Natural population increase rate is the difference between the number of live births and the number of deaths, in relation to the population size in the respective year.

Natural population increase rate = (number of live births - number of deaths) / population size * 1000

Infants deaths, per 1 000 livebirths

Infant mortality rate is the ratio of deceased children under 1 year of age and live births in the respective year. The mortality rate is expressed per 1000 live births.

Infant mortality rate = (number of deceased children under 1 year of age / number of live births) * 1000

Additional info:



Download all database data in Excel format:

[Data](#)



DevInfo profiles:

devinfo.stat.gov.rs/SerbiaProfileLauncher/?lang=en



DevInfo online database:

devinfo.stat.gov.rs/vitalna



For additional information or questions please contact:

devinfo@stat.gov.rs