

Natural changes of population 1961 – 2022

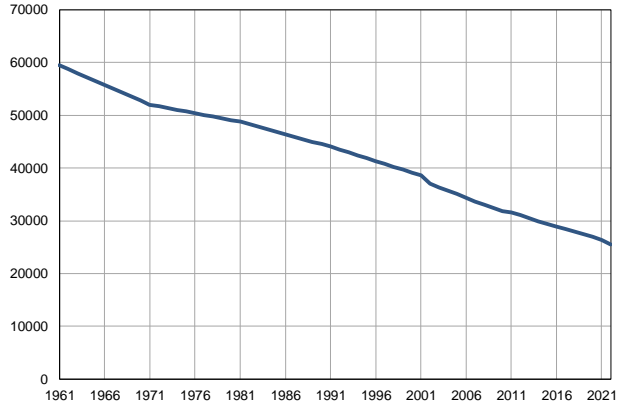
Profile
July 2023

Knjaževac

	1961	2022
Population size	59445	25469
Livebirths, Number	530	157
Deaths, Number	630	621
Natural increase, Number	-100	-464
Infants deaths, Number	30	0
Livebirths, per 1,000 population	9	6
Deaths, per 1,000 population	11	24
Natural increase, per 1,000 population	-2	-18
Infants deaths, per 1,000 livebirths	57	0

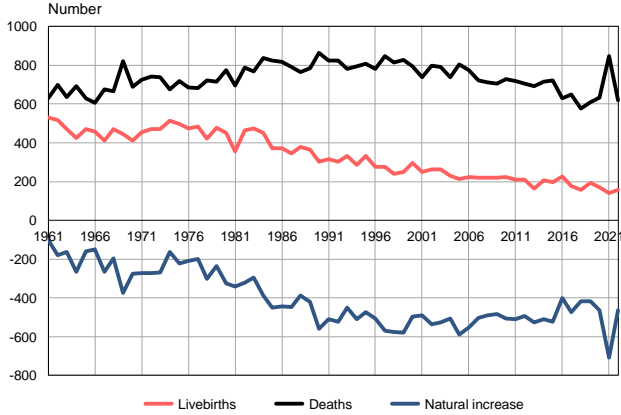
Source: Vital Statistics, SORS

Population size, 1961–2022



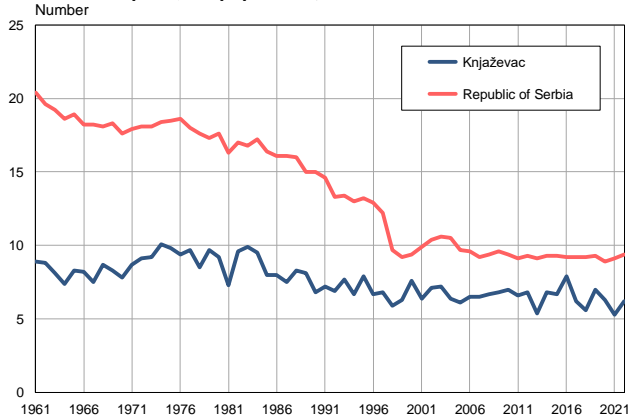
Source: Vital Statistics, SORS

Livebirths, deaths and natural increase, 1961–2022



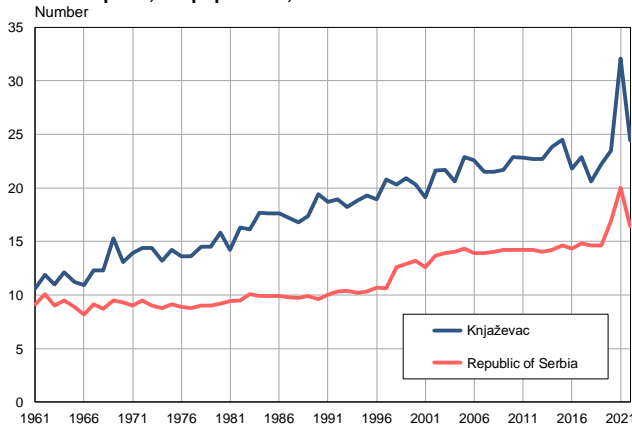
Source: Vital Statistics, SORS

Livebirths per 1,000 population, 1961–2022



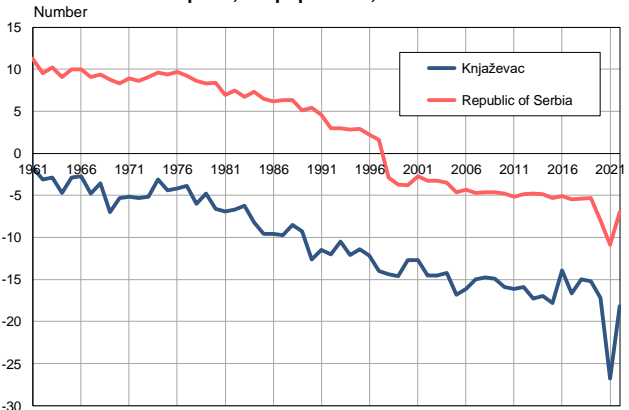
Source: Vital Statistics, SORS

Deaths per 1,000 population, 1961–2022



Source: Vital Statistics, SORS

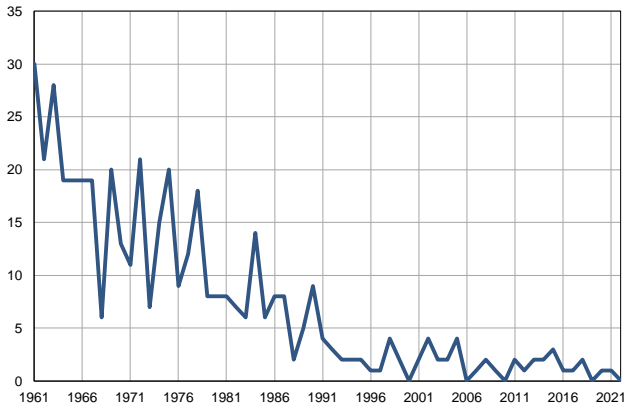
Natural increase per 1,000 population, 1961–2022



Source: Vital Statistics, SORS

Infants deaths, 1961–2022

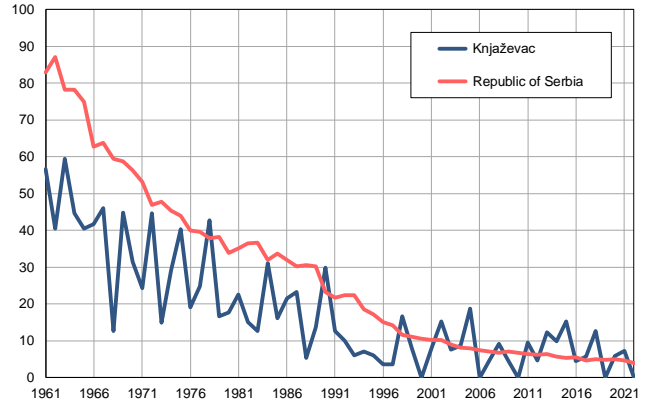
Number



Source: Vital Statistics, SORS

Infants deaths per 1,000 livebirths, 1961–2022

Number



Source: Vital Statistics, SORS

Table. Natural changes of population, Knjaževac

Year	Number of population	Livebirths	Deaths	Natural increase	Infants deaths	per 1000 population			Infant deaths per 1000 livebirths
						Livebirths	Deaths	Natural increase	
1961	59445	530	630	-100	30	8.9	10.6	-1.7	56.6
1962	58702	518	699	-181	21	8.8	11.9	-3.1	40.5
1963	57958	471	635	-164	28	8.1	11.0	-2.9	59.4
1964	57215	426	693	-267	19	7.4	12.1	-4.7	44.6
1965	56471	470	630	-160	19	8.3	11.2	-2.9	40.4
1966	55728	456	605	-149	19	8.2	10.9	-2.7	41.7
1967	54984	412	676	-264	19	7.5	12.3	-4.8	46.1
1968	54241	472	667	-195	6	8.7	12.3	-3.6	12.7
1969	53497	446	820	-374	20	8.3	15.3	-7.0	44.8
1970	52754	413	689	-276	13	7.8	13.1	-5.3	31.5
1971	52010	453	725	-272	11	8.7	13.9	-5.2	24.3
1972	51688	470	742	-272	21	9.1	14.4	-5.3	44.7
1973	51366	470	738	-268	7	9.2	14.4	-5.2	14.9
1974	51043	513	676	-163	15	10.1	13.2	-3.1	29.2
1975	50722	496	719	-223	20	9.8	14.2	-4.4	40.3
1976	50400	474	684	-210	9	9.4	13.6	-4.2	19.0
1977	50078	484	683	-199	12	9.7	13.6	-3.9	24.8
1978	49756	422	723	-301	18	8.5	14.5	-6.0	42.7
1979	49433	479	715	-236	8	9.7	14.5	-4.8	16.7
1980	49111	452	776	-324	8	9.2	15.8	-6.6	17.7
1981	48789	355	695	-340	8	7.3	14.2	-6.9	22.5
1982	48314	465	787	-322	7	9.6	16.3	-6.7	15.1
1983	47838	474	768	-294	6	9.9	16.1	-6.2	12.7
1984	47363	451	839	-388	14	9.5	17.7	-8.2	31.0
1985	46888	373	825	-452	6	8.0	17.6	-9.6	16.1
1986	46413	372	817	-445	8	8.0	17.6	-9.6	21.5
1987	45937	345	792	-447	8	7.5	17.2	-9.7	23.2
1988	45462	377	764	-387	2	8.3	16.8	-8.5	5.3
1989	44987	364	785	-421	5	8.1	17.4	-9.3	13.7
1990	44511	302	863	-561	9	6.8	19.4	-12.6	29.8
1991	44036	315	825	-510	4	7.2	18.7	-11.5	12.7
1992	43492	301	823	-522	3	6.9	18.9	-12.0	10.0
1993	42947	332	781	-449	2	7.7	18.2	-10.5	6.0
1994	42402	286	796	-510	2	6.7	18.8	-12.1	7.0
1995	41857	332	807	-475	2	7.9	19.3	-11.4	6.0
1996	41312	276	782	-506	1	6.7	18.9	-12.2	3.6
1997	40768	277	846	-569	1	6.8	20.8	-14.0	3.6
1998	40222	239	815	-576	4	5.9	20.3	-14.4	16.7
1999	39677	251	829	-578	2	6.3	20.9	-14.6	8.0
2000	39133	296	794	-498	0	7.6	20.3	-12.7	0.0
2001	38589	248	737	-489	2	6.4	19.1	-12.7	8.1
2002	36998	263	799	-536	4	7.1	21.6	-14.5	15.2
2003	36372	263	790	-527	2	7.2	21.7	-14.5	7.6
2004	35744	230	738	-508	2	6.4	20.6	-14.2	8.7
2005	35047	214	803	-589	4	6.1	22.9	-16.8	18.7

Table. Natural changes of population, Knjaževac

Year	Number of population	Livebirths	Deaths	Natural increase	Infants deaths	per 1000 population			Infant deaths per 1000 livebirths
						Livebirths	Deaths	Natural increase	
2006	34345	222	776	-554	0	6.5	22.6	-16.1	0.0
2007	33684	219	723	-504	1	6.5	21.5	-15.0	4.6
2008	33051	220	711	-491	2	6.7	21.5	-14.8	9.1
2009	32447	220	704	-484	1	6.8	21.7	-14.9	4.5
2010	31851	222	729	-507	0	7.0	22.9	-15.9	0.0
2011	31603	210	720	-510	2	6.6	22.8	-16.1	9.5
2012	31042	211	706	-495	1	6.8	22.7	-15.9	4.7
2013	30490	164	692	-528	2	5.4	22.7	-17.3	12.2
2014	29948	205	714	-509	2	6.8	23.8	-17.0	9.8
2015	29413	197	721	-524	3	6.7	24.5	-17.8	15.2
2016	28896	228	629	-401	1	7.9	21.8	-13.9	4.4
2017	28402	177	650	-473	1	6.2	22.9	-16.7	5.6
2018	27921	157	576	-419	2	5.6	20.6	-15.0	12.7
2019	27476	192	610	-418	0	7.0	22.2	-15.2	0.0
2020	27005	170	634	-464	1	6.3	23.5	-17.2	5.9
2021	26382	139	847	-708	1	5.3	32.1	-26.8	7.2
2022	25469	157	621	-464	0	6.2	24.4	-18.2	0.0

Source: Vital Statistics, SORS

Definitions

Population size

Number of population in the respective year. The data on the number of population in 1961, 1971, 1981 and 1991 are census data, while for the inter-census years the number of population was calculated as an average inter-census difference. From 2002 are given the population estimates that were calculated according to the census of population results and the annual statistics of natural mechanical population movements.

Livebirths

Absolute number of live births in the course of a year. Live born child means a child giving vital signs after birth (breathing, i.e. heartbeat), even for the shortest time, regardless the mother's pregnancy duration.

Deaths

Absolute number of deaths in the course of a year. Deceased is a person that whenever after having been born live, shows permanently stopped vital signs.

Natural increase

Natural population increase is the number of live births minus the number of deaths.

Infants deaths

Absolute number of infants deaths in the course of a year. Deceased infant is a child that after having been born live and before aged one year, shows permanently stopped vital signs.

Livebirths, per 1 000 population

Livebirths rate is the ratio of the number of live births and the population size in the respective year. The number of live births is divided by the population size and then multiplied by 1000.

Deaths, per 1 000 population

General mortality rate represents the ratio between the number of deaths and the population size in the respective year. The number of deaths is divided by population size and then multiplied by 1000.

Natural increase, per 1 000 population

Natural population increase rate is the difference between the number of live births and the number of deaths, in relation to the population size in the respective year.

Natural population increase rate = (number of live births - number of deaths) / population size * 1000

Infants deaths, per 1 000 livebirths

Infant mortality rate is the ratio of deceased children under 1 year of age and live births in the respective year. The mortality rate is expressed per 1000 live births.

Infant mortality rate = (number of deceased children under 1 year of age / number of live births) * 1000

Additional info:



Download all database data in Excel format:

[Data](#)



DevInfo profiles:

devinfo.stat.gov.rs/SerbiaProfileLauncher/?lang=en



DevInfo online database:

devinfo.stat.gov.rs/vitalna



For additional information or questions please contact:

devinfo@stat.gov.rs