

Natural changes of population 1961 – 2022

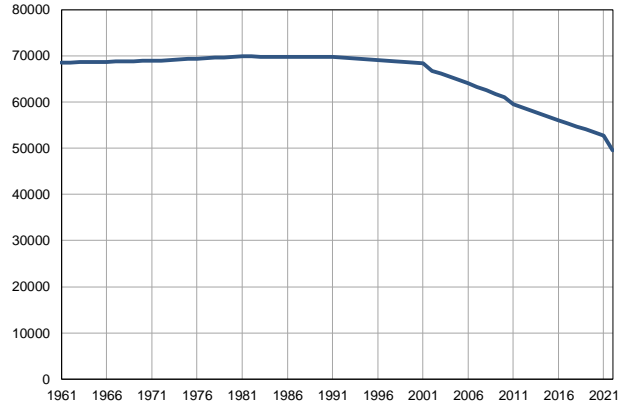
Profile
July 2023

Kikinda

	1961	2022
Population size	68562	49541
Livebirths, Number	1205	474
Deaths, Number	591	962
Natural increase, Number	614	-488
Infants deaths, Number	90	2
Livebirths, per 1,000 population	18	10
Deaths, per 1,000 population	9	19
Natural increase, per 1,000 population	9	-10
Infants deaths, per 1,000 livebirths	75	4

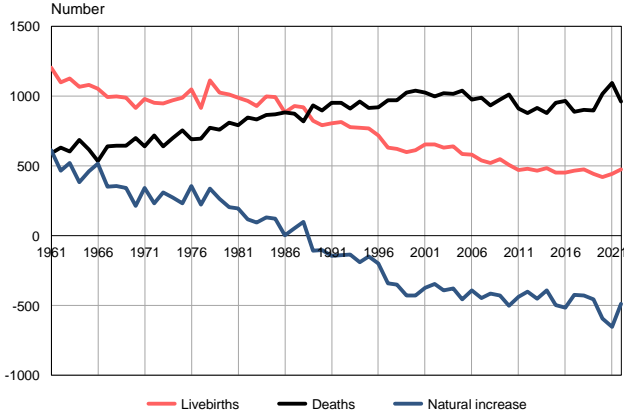
Source: Vital Statistics, SORS

Population size, 1961–2022



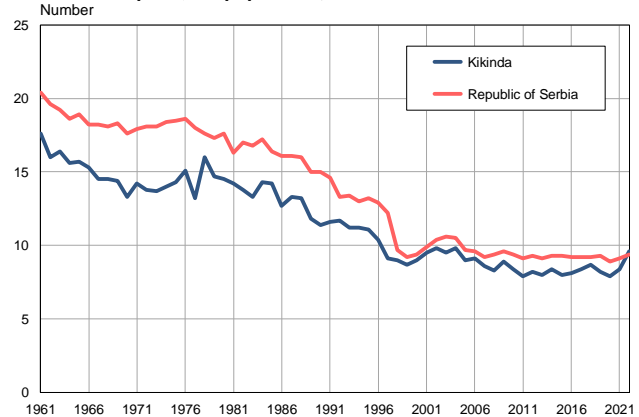
Source: Vital Statistics, SORS

Livebirths, deaths and natural increase, 1961–2022



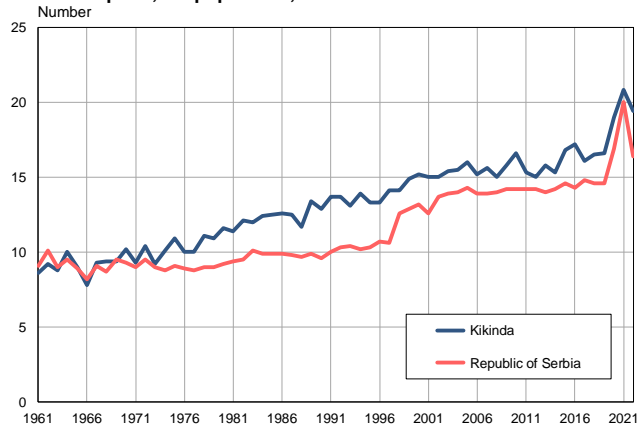
Source: Vital Statistics, SORS

Livebirths per 1,000 population, 1961–2022



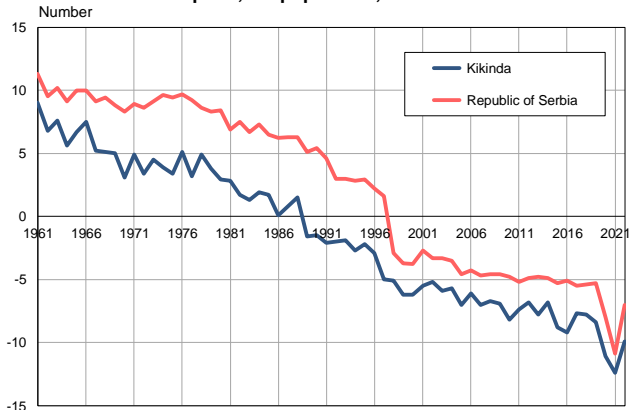
Source: Vital Statistics, SORS

Deaths per 1,000 population, 1961–2022



Source: Vital Statistics, SORS

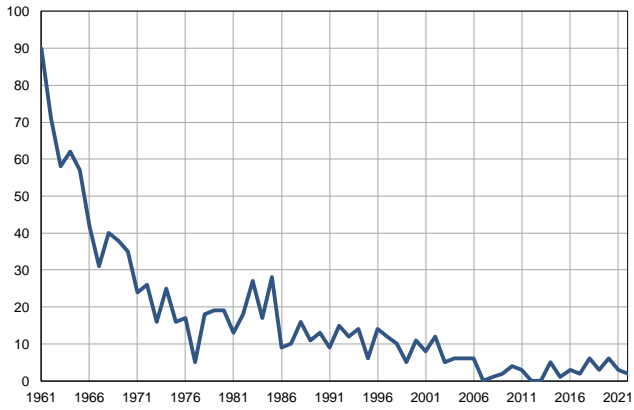
Natural increase per 1,000 population, 1961–2022



Source: Vital Statistics, SORS

Infants deaths, 1961–2022

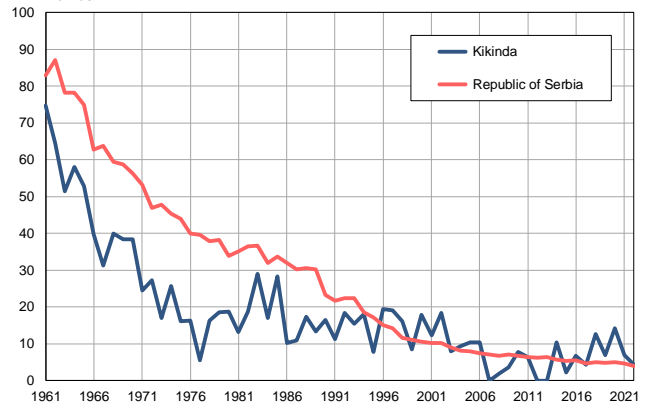
Number



Source: Vital Statistics, SORS

Infants deaths per 1,000 livebirths, 1961–2022

Number



Source: Vital Statistics, SORS

Table. Natural changes of population, Kikinda

Year	Number of population	Livebirths	Deaths	Natural increase	Infants deaths	per 1000 population			Infant deaths per 1000 livebirths
						Livebirths	Deaths	Natural increase	
1961	68562	1205	591	614	90	17.6	8.6	9.0	74.7
1962	68596	1100	633	467	71	16.0	9.2	6.8	64.5
1963	68633	1126	606	520	58	16.4	8.8	7.6	51.5
1964	68668	1069	685	384	62	15.6	10.0	5.6	58.0
1965	68703	1080	616	464	57	15.7	9.0	6.7	52.8
1966	68738	1054	537	517	42	15.3	7.8	7.5	39.8
1967	68774	995	643	352	31	14.5	9.3	5.2	31.2
1968	68808	1000	644	356	40	14.5	9.4	5.1	40.0
1969	68844	991	648	343	38	14.4	9.4	5.0	38.3
1970	68880	915	701	214	35	13.3	10.2	3.1	38.3
1971	68915	982	641	341	24	14.2	9.3	4.9	24.4
1972	69010	954	720	234	26	13.8	10.4	3.4	27.3
1973	69105	949	639	310	16	13.7	9.2	4.5	16.9
1974	69200	972	700	272	25	14.0	10.1	3.9	25.7
1975	69295	991	757	234	16	14.3	10.9	3.4	16.1
1976	69390	1048	691	357	17	15.1	10.0	5.1	16.2
1977	69484	918	696	222	5	13.2	10.0	3.2	5.4
1978	69580	1112	773	339	18	16.0	11.1	4.9	16.2
1979	69674	1026	759	267	19	14.7	10.9	3.8	18.5
1980	69769	1014	809	205	19	14.5	11.6	2.9	18.7
1981	69864	989	794	195	13	14.2	11.4	2.8	13.1
1982	69851	965	846	119	18	13.8	12.1	1.7	18.7
1983	69840	932	836	96	27	13.3	12.0	1.3	29.0
1984	69828	1001	867	134	17	14.3	12.4	1.9	17.0
1985	69816	994	872	122	28	14.2	12.5	1.7	28.2
1986	69804	886	883	3	9	12.7	12.6	0.1	10.2
1987	69791	928	875	53	10	13.3	12.5	0.8	10.8
1988	69779	919	818	101	16	13.2	11.7	1.5	17.4
1989	69767	826	934	-108	11	11.8	13.4	-1.6	13.3
1990	69755	794	897	-103	13	11.4	12.9	-1.5	16.4
1991	69743	807	952	-145	9	11.6	13.7	-2.1	11.2
1992	69608	815	955	-140	15	11.7	13.7	-2.0	18.4
1993	69473	777	911	-134	12	11.2	13.1	-1.9	15.4
1994	69338	774	964	-190	14	11.2	13.9	-2.7	18.1
1995	69203	770	918	-148	6	11.1	13.3	-2.2	7.8
1996	69068	721	921	-200	14	10.4	13.3	-2.9	19.4
1997	68933	630	971	-341	12	9.1	14.1	-5.0	19.0
1998	68798	621	972	-351	10	9.0	14.1	-5.1	16.1
1999	68663	598	1026	-428	5	8.7	14.9	-6.2	8.4
2000	68528	614	1041	-427	11	9.0	15.2	-6.2	17.9
2001	68393	653	1025	-372	8	9.5	15.0	-5.5	12.3
2002	66781	656	1001	-345	12	9.8	15.0	-5.2	18.3
2003	66168	631	1020	-389	5	9.5	15.4	-5.9	7.9
2004	65532	643	1019	-376	6	9.8	15.5	-5.7	9.3
2005	64842	584	1039	-455	6	9.0	16.0	-7.0	10.3

Table. Natural changes of population, Kikinda

Year	Number of population	Livebirths	Deaths	Natural increase	Infants deaths	per 1000 population			Infant deaths per 1000 livebirths
						Livebirths	Deaths	Natural increase	
2006	64119	582	975	-393	6	9.1	15.2	-6.1	10.3
2007	63324	542	988	-446	0	8.6	15.6	-7.0	0.0
2008	62530	521	935	-414	1	8.3	15.0	-6.7	1.9
2009	61790	550	976	-426	2	8.9	15.8	-6.9	3.6
2010	61007	510	1011	-501	4	8.4	16.6	-8.2	7.8
2011	59511	472	910	-438	3	7.9	15.3	-7.4	6.4
2012	58824	481	881	-400	0	8.2	15.0	-6.8	0.0
2013	58099	466	917	-451	0	8.0	15.8	-7.8	0.0
2014	57424	485	878	-393	5	8.4	15.3	-6.8	10.3
2015	56760	455	952	-497	1	8.0	16.8	-8.8	2.2
2016	55998	451	965	-514	3	8.1	17.2	-9.2	6.7
2017	55318	467	891	-424	2	8.4	16.1	-7.7	4.3
2018	54729	474	903	-429	6	8.7	16.5	-7.8	12.7
2019	54131	443	897	-454	3	8.2	16.6	-8.4	6.8
2020	53453	423	1016	-593	6	7.9	19.0	-11.1	14.2
2021	52668	442	1095	-653	3	8.4	20.8	-12.4	6.8
2022	49541	474	962	-488	2	9.6	19.4	-9.9	4.2

Source: Vital Statistics, SORS

Definitions

Population size

Number of population in the respective year. The data on the number of population in 1961, 1971, 1981 and 1991 are census data, while for the inter-census years the number of population was calculated as an average inter-census difference. From 2002 are given the population estimates that were calculated according to the census of population results and the annual statistics of natural mechanical population movements.

Livebirths

Absolute number of live births in the course of a year. Live born child means a child giving vital signs after birth (breathing, i.e. heartbeat), even for the shortest time, regardless the mother's pregnancy duration.

Deaths

Absolute number of deaths in the course of a year. Deceased is a person that whenever after having been born live, shows permanently stopped vital signs.

Natural increase

Natural population increase is the number of live births minus the number of deaths.

Infants deaths

Absolute number of infants deaths in the course of a year. Deceased infant is a child that after having been born live and before aged one year, shows permanently stopped vital signs.

Livebirths, per 1 000 population

Livebirths rate is the ratio of the number of live births and the population size in the respective year. The number of live births is divided by the population size and then multiplied by 1000.

Deaths, per 1 000 population

General mortality rate represents the ratio between the number of deaths and the population size in the respective year. The number of deaths is divided by population size and then multiplied by 1000.

Natural increase, per 1 000 population

Natural population increase rate is the difference between the number of live births and the number of deaths, in relation to the population size in the respective year.

Natural population increase rate = (number of live births - number of deaths) / population size * 1000

Infants deaths, per 1 000 livebirths

Infant mortality rate is the ratio of deceased children under 1 year of age and live births in the respective year. The mortality rate is expressed per 1000 live births.

Infant mortality rate = (number of deceased children under 1 year of age / number of live births) * 1000

Additional info:



Download all database data in Excel format:

[Data](#)



DevInfo profiles:

devinfo.stat.gov.rs/SerbiaProfileLauncher/?lang=en



DevInfo online database:

devinfo.stat.gov.rs/vitalna



For additional information or questions please contact:

devinfo@stat.gov.rs