

## Natural changes of population 1961 – 2022

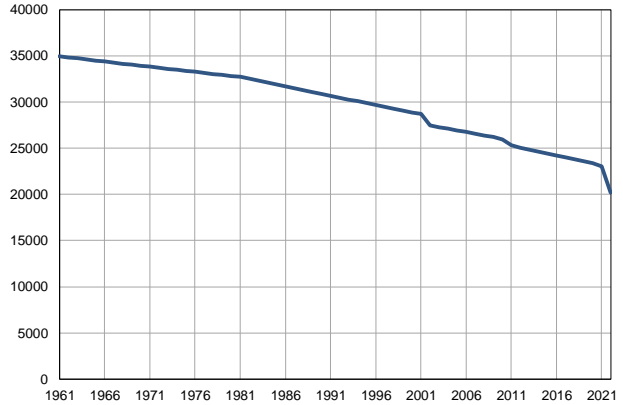
Profile  
July 2023

# Kanjiža

	1961	2022
Population size	34960	20218
Livebirths, Number	553	146
Deaths, Number	382	398
Natural increase, Number	171	-252
Infants deaths, Number	31	0
Livebirths, per 1,000 population	16	7
Deaths, per 1,000 population	11	20
Natural increase, per 1,000 population	5	-13
Infants deaths, per 1,000 livebirths	56	0

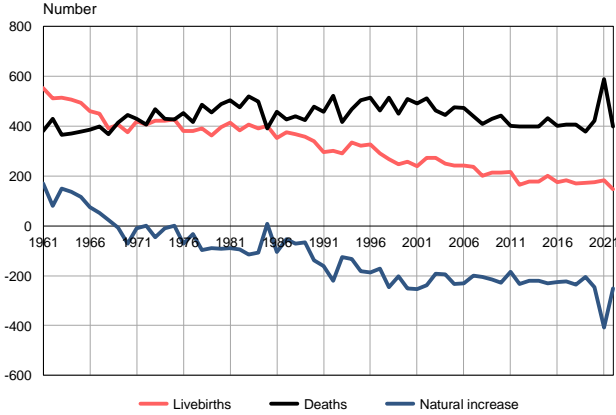
Source: Vital Statistics, SORS

Population size, 1961–2022



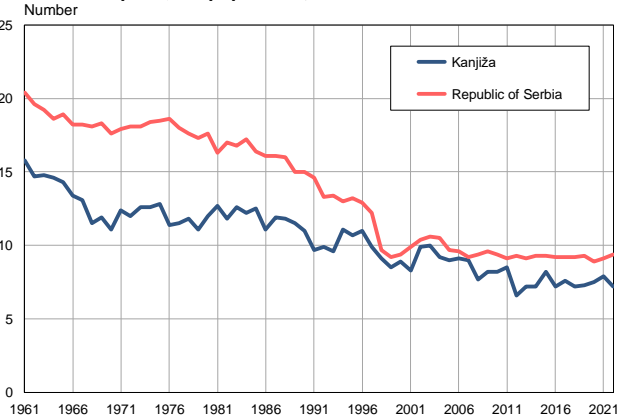
Source: Vital Statistics, SORS

Livebirths, deaths and natural increase, 1961–2022



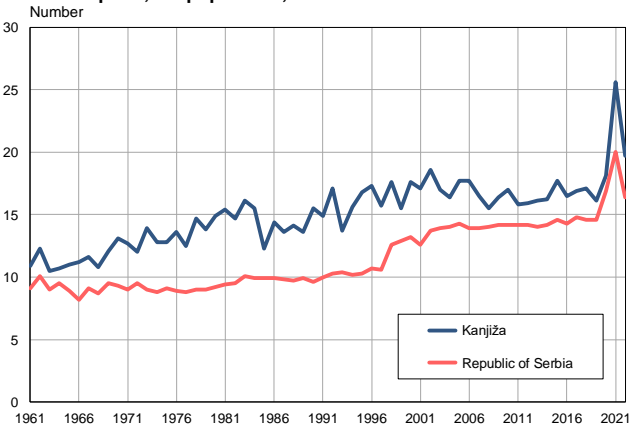
Source: Vital Statistics, SORS

Livebirths per 1,000 population, 1961–2022



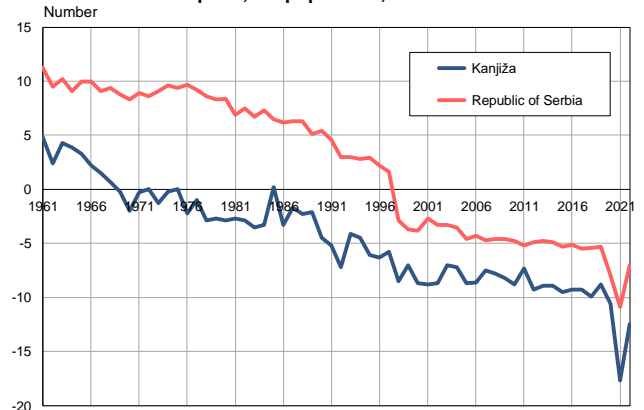
Source: Vital Statistics, SORS

Deaths per 1,000 population, 1961–2022



Source: Vital Statistics, SORS

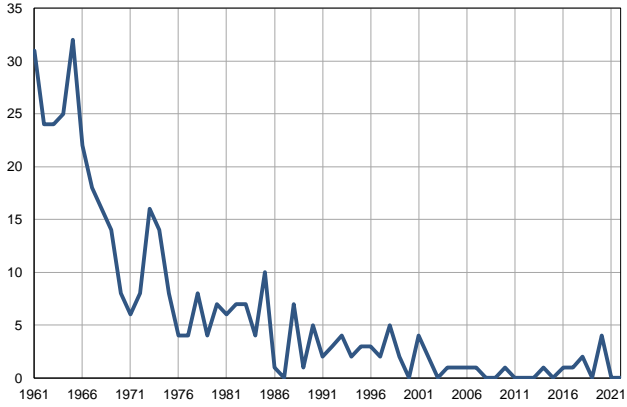
Natural increase per 1,000 population, 1961–2022



Source: Vital Statistics, SORS

**Infants deaths, 1961–2022**

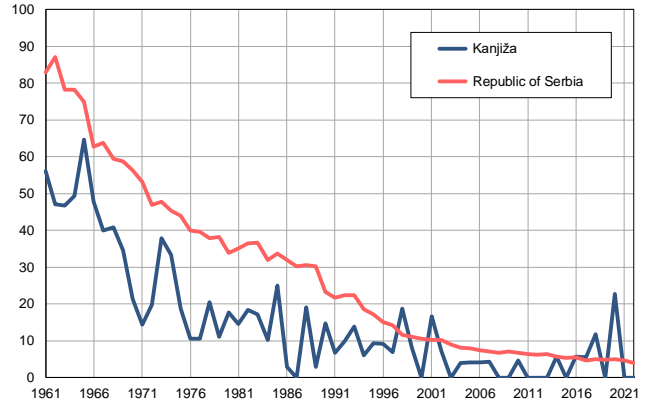
Number



Source: Vital Statistics, SORS

**Infants deaths per 1,000 livebirths, 1961–2022**

Number



Source: Vital Statistics, SORS

**Table. Natural changes of population, Kanjiža**

Year	Number of population	Livebirths	Deaths	Natural increase	Infants deaths	per 1000 population			Infant deaths per 1000 livebirths
						Livebirths	Deaths	Natural increase	
1961	34960	553	382	171	31	15.8	10.9	4.9	56.1
1962	34846	511	430	81	24	14.7	12.3	2.4	47.0
1963	34731	514	365	149	24	14.8	10.5	4.3	46.7
1964	34617	507	371	136	25	14.6	10.7	3.9	49.3
1965	34503	495	378	117	32	14.3	11.0	3.3	64.6
1966	34388	460	386	74	22	13.4	11.2	2.2	47.8
1967	34274	450	398	52	18	13.1	11.6	1.5	40.0
1968	34160	392	369	23	16	11.5	10.8	0.7	40.8
1969	34046	406	413	-7	14	11.9	12.1	-0.2	34.5
1970	33931	375	446	-71	8	11.1	13.1	-2.0	21.3
1971	33817	420	429	-9	6	12.4	12.7	-0.3	14.3
1972	33706	406	406	0	8	12.0	12.0	0.0	19.7
1973	33595	423	468	-45	16	12.6	13.9	-1.3	37.8
1974	33485	421	430	-9	14	12.6	12.8	-0.2	33.3
1975	33374	428	427	1	8	12.8	12.8	0.0	18.7
1976	33262	380	452	-72	4	11.4	13.6	-2.2	10.5
1977	33153	382	416	-34	4	11.5	12.5	-1.0	10.5
1978	33041	391	487	-96	8	11.8	14.7	-2.9	20.5
1979	32931	364	454	-90	4	11.1	13.8	-2.7	11.0
1980	32820	395	488	-93	7	12.0	14.9	-2.9	17.7
1981	32709	415	505	-90	6	12.7	15.4	-2.7	14.5
1982	32505	383	477	-94	7	11.8	14.7	-2.9	18.3
1983	32301	406	520	-114	7	12.6	16.1	-3.5	17.2
1984	32097	392	499	-107	4	12.2	15.5	-3.3	10.2
1985	31893	400	392	8	10	12.5	12.3	0.2	25.0
1986	31689	352	457	-105	1	11.1	14.4	-3.3	2.8
1987	31484	375	428	-53	0	11.9	13.6	-1.7	0.0
1988	31280	369	441	-72	7	11.8	14.1	-2.3	19.0
1989	31076	357	424	-67	1	11.5	13.6	-2.1	2.8
1990	30872	340	478	-138	5	11.0	15.5	-4.5	14.7
1991	30668	297	457	-160	2	9.7	14.9	-5.2	6.7
1992	30470	302	522	-220	3	9.9	17.1	-7.2	9.9
1993	30272	290	416	-126	4	9.6	13.7	-4.1	13.8
1994	30074	335	469	-134	2	11.1	15.6	-4.5	6.0
1995	29876	321	503	-182	3	10.7	16.8	-6.1	9.3
1996	29678	327	514	-187	3	11.0	17.3	-6.3	9.2
1997	29481	291	463	-172	2	9.9	15.7	-5.8	6.9
1998	29283	267	514	-247	5	9.1	17.6	-8.5	18.7
1999	29085	247	450	-203	2	8.5	15.5	-7.0	8.1
2000	28887	258	509	-251	0	8.9	17.6	-8.7	0.0
2001	28689	239	492	-253	4	8.3	17.1	-8.8	16.7
2002	27480	273	511	-238	2	9.9	18.6	-8.7	7.3
2003	27289	272	463	-191	0	10.0	17.0	-7.0	0.0
2004	27123	249	444	-195	1	9.2	16.4	-7.2	4.0
2005	26948	242	476	-234	1	9.0	17.7	-8.7	4.1

**Table. Natural changes of population, Kanjiža**

Year	Number of population	Livebirths	Deaths	Natural increase	Infants deaths	per 1000 population			Infant deaths per 1000 livebirths
						Livebirths	Deaths	Natural increase	
2006	26754	243	474	-231	1	9.1	17.7	-8.6	4.1
2007	26566	238	439	-201	1	9.0	16.5	-7.5	4.2
2008	26391	202	408	-206	0	7.7	15.5	-7.8	0.0
2009	26203	214	430	-216	0	8.2	16.4	-8.2	0.0
2010	25981	214	442	-228	1	8.2	17.0	-8.8	4.7
2011	25326	216	401	-185	0	8.5	15.8	-7.3	0.0
2012	25080	165	399	-234	0	6.6	15.9	-9.3	0.0
2013	24833	179	399	-220	0	7.2	16.1	-8.9	0.0
2014	24627	178	398	-220	1	7.2	16.2	-8.9	5.6
2015	24406	200	431	-231	0	8.2	17.7	-9.5	0.0
2016	24193	174	400	-226	1	7.2	16.5	-9.3	5.7
2017	23992	183	406	-223	1	7.6	16.9	-9.3	5.5
2018	23783	171	407	-236	2	7.2	17.1	-9.9	11.7
2019	23581	173	379	-206	0	7.3	16.1	-8.8	0.0
2020	23369	176	422	-246	4	7.5	18.1	-10.6	22.7
2021	23039	182	589	-407	0	7.9	25.6	-17.7	0.0
2022	20218	146	398	-252	0	7.2	19.7	-12.5	0.0

Source: Vital Statistics, SORS

## Definitions

### Population size

Number of population in the respective year. The data on the number of population in 1961, 1971, 1981 and 1991 are census data, while for the inter-census years the number of population was calculated as an average inter-census difference. From 2002 are given the population estimates that were calculated according to the census of population results and the annual statistics of natural mechanical population movements.

### Livebirths

Absolute number of live births in the course of a year. Live born child means a child giving vital signs after birth (breathing, i.e. heartbeat), even for the shortest time, regardless the mother's pregnancy duration.

### Deaths

Absolute number of deaths in the course of a year. Deceased is a person that whenever after having been born live, shows permanently stopped vital signs.

### Natural increase

Natural population increase is the number of live births minus the number of deaths.

### Infants deaths

Absolute number of infants deaths in the course of a year. Deceased infant is a child that after having been born live and before aged one year, shows permanently stopped vital signs.

### Livebirths, per 1 000 population

Livebirths rate is the ratio of the number of live births and the population size in the respective year. The number of live births is divided by the population size and then multiplied by 1000.

### Deaths, per 1 000 population

General mortality rate represents the ratio between the number of deaths and the population size in the respective year. The number of deaths is divided by population size and then multiplied by 1000.

### Natural increase, per 1 000 population

Natural population increase rate is the difference between the number of live births and the number of deaths, in relation to the population size in the respective year.

Natural population increase rate = (number of live births - number of deaths) / population size \* 1000

### Infants deaths, per 1 000 livebirths

Infant mortality rate is the ratio of deceased children under 1 year of age and live births in the respective year. The mortality rate is expressed per 1000 live births.

Infant mortality rate = (number of deceased children under 1 year of age / number of live births) \* 1000

## Additional info:



Download all database data in Excel format:

[Data](#)



DevInfo profiles:

[devinfo.stat.gov.rs/SerbiaProfileLauncher/?lang=en](http://devinfo.stat.gov.rs/SerbiaProfileLauncher/?lang=en)



DevInfo online database:

[devinfo.stat.gov.rs/vitalna](http://devinfo.stat.gov.rs/vitalna)



For additional information or questions please contact:

[devinfo@stat.gov.rs](mailto:devinfo@stat.gov.rs)