

Natural changes of population 1961 – 2022

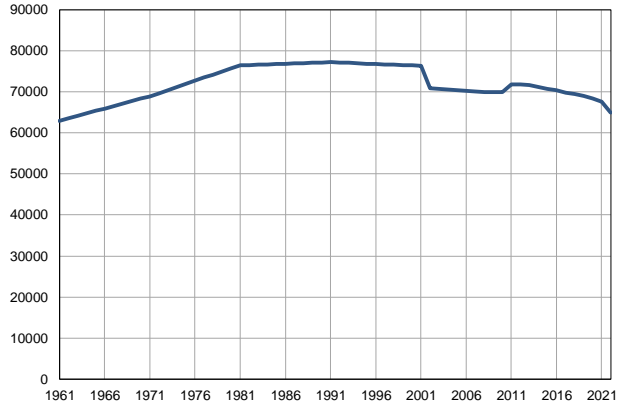
Profile
July 2023

Jagodina

	1961	2022
Population size	62950	64893
Livebirths, Number	1007	523
Deaths, Number	481	1146
Natural increase, Number	526	-623
Infants deaths, Number	57	1
Livebirths, per 1,000 population	16	8
Deaths, per 1,000 population	8	18
Natural increase, per 1,000 population	8	-10
Infants deaths, per 1,000 livebirths	57	2

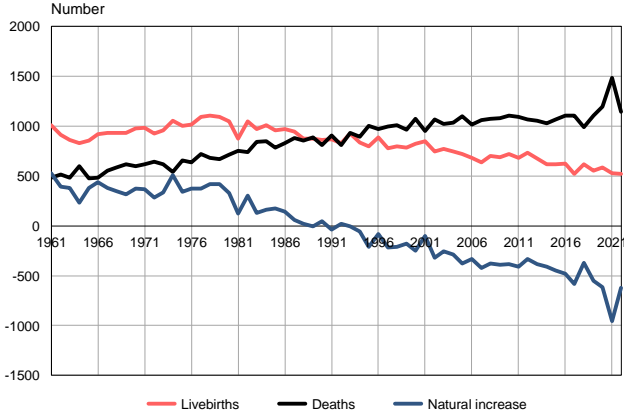
Source: Vital Statistics, SORS

Population size, 1961–2022



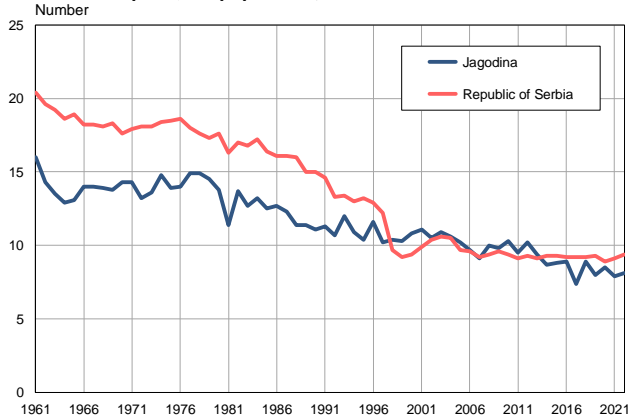
Source: Vital Statistics, SORS

Livebirths, deaths and natural increase, 1961–2022



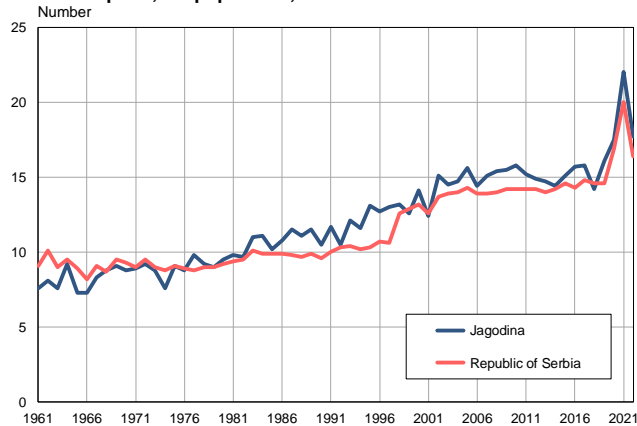
Source: Vital Statistics, SORS

Livebirths per 1,000 population, 1961–2022



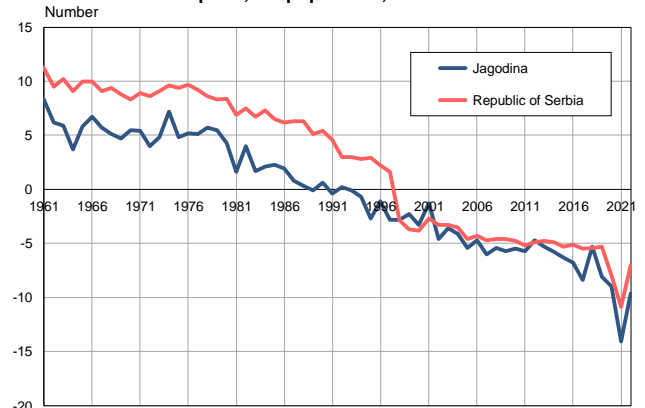
Source: Vital Statistics, SORS

Deaths per 1,000 population, 1961–2022



Source: Vital Statistics, SORS

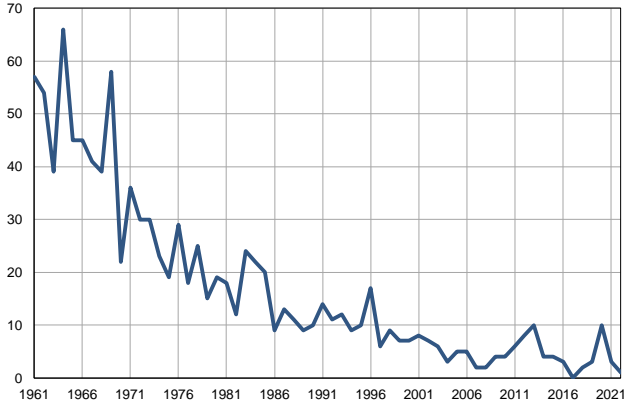
Natural increase per 1,000 population, 1961–2022



Source: Vital Statistics, SORS

Infants deaths, 1961–2022

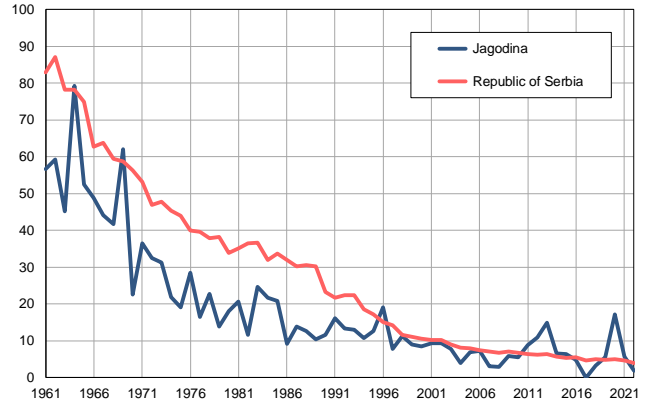
Number



Source: Vital Statistics, SORS

Infants deaths per 1,000 livebirths, 1961–2022

Number



Source: Vital Statistics, SORS

Table. Natural changes of population, Jagodina

Year	Number of population	Livebirths	Deaths	Natural increase	Infants deaths	per 1000 population			Infant deaths per 1000 livebirths
						Livebirths	Deaths	Natural increase	
1961	62950	1007	481	526	57	16.0	7.6	8.4	56.6
1962	63546	911	516	395	54	14.3	8.1	6.2	59.3
1963	64142	863	485	378	39	13.5	7.6	5.9	45.2
1964	64738	832	597	235	66	12.9	9.2	3.7	79.3
1965	65334	857	479	378	45	13.1	7.3	5.8	52.5
1966	65930	921	480	441	45	14.0	7.3	6.7	48.9
1967	66526	930	552	378	41	14.0	8.3	5.7	44.1
1968	67122	935	588	347	39	13.9	8.8	5.1	41.7
1969	67718	934	617	317	58	13.8	9.1	4.7	62.1
1970	68314	976	600	376	22	14.3	8.8	5.5	22.5
1971	68910	986	616	370	36	14.3	8.9	5.4	36.5
1972	69665	923	641	282	30	13.2	9.2	4.0	32.5
1973	70420	957	621	336	30	13.6	8.8	4.8	31.3
1974	71175	1053	543	510	23	14.8	7.6	7.2	21.8
1975	71930	1000	657	343	19	13.9	9.1	4.8	19.0
1976	72685	1017	640	377	29	14.0	8.8	5.2	28.5
1977	73440	1094	722	372	18	14.9	9.8	5.1	16.5
1978	74195	1103	682	421	25	14.9	9.2	5.7	22.7
1979	74950	1090	672	418	15	14.5	9.0	5.5	13.8
1980	75705	1048	717	331	19	13.8	9.5	4.3	18.1
1981	76460	874	752	122	18	11.4	9.8	1.6	20.6
1982	76537	1045	740	305	12	13.7	9.7	4.0	11.5
1983	76613	971	844	127	24	12.7	11.0	1.7	24.7
1984	76690	1012	849	163	22	13.2	11.1	2.1	21.7
1985	76766	960	785	175	20	12.5	10.2	2.3	20.8
1986	76843	974	833	141	9	12.7	10.8	1.9	9.2
1987	76920	945	883	62	13	12.3	11.5	0.8	13.8
1988	76996	875	857	18	11	11.4	11.1	0.3	12.6
1989	77073	877	885	-8	9	11.4	11.5	-0.1	10.3
1990	77149	860	812	48	10	11.1	10.5	0.6	11.6
1991	77226	871	907	-36	14	11.3	11.7	-0.4	16.1
1992	77135	828	809	19	11	10.7	10.5	0.2	13.3
1993	77043	928	932	-4	12	12.0	12.1	-0.1	12.9
1994	76953	838	896	-58	9	10.9	11.6	-0.7	10.7
1995	76861	796	1005	-209	10	10.4	13.1	-2.7	12.6
1996	76769	889	974	-85	17	11.6	12.7	-1.1	19.1
1997	76678	779	996	-217	6	10.2	13.0	-2.8	7.7
1998	76586	800	1009	-209	9	10.4	13.2	-2.8	11.3
1999	76494	787	965	-178	7	10.3	12.6	-2.3	8.9
2000	76404	825	1074	-249	7	10.8	14.1	-3.3	8.5
2001	76312	847	949	-102	8	11.1	12.4	-1.3	9.4
2002	70939	747	1068	-321	7	10.5	15.1	-4.6	9.4
2003	70734	771	1025	-254	6	10.9	14.5	-3.6	7.8
2004	70566	747	1036	-289	3	10.6	14.7	-4.1	4.0
2005	70371	721	1097	-376	5	10.2	15.6	-5.4	6.9

Table. Natural changes of population, Jagodina

Year	Number of population	Livebirths	Deaths	Natural increase	Infants deaths	per 1000 population			Infant deaths per 1000 livebirths
						Livebirths	Deaths	Natural increase	
2006	70204	683	1013	-330	5	9.7	14.4	-4.7	7.3
2007	70085	635	1059	-424	2	9.1	15.1	-6.0	3.1
2008	69984	700	1077	-377	2	10.0	15.4	-5.4	2.9
2009	69949	688	1081	-393	4	9.8	15.5	-5.7	5.8
2010	69981	723	1107	-384	4	10.3	15.8	-5.5	5.5
2011	71849	679	1091	-412	6	9.5	15.2	-5.7	8.8
2012	71793	732	1067	-335	8	10.2	14.9	-4.7	10.9
2013	71583	673	1054	-381	10	9.4	14.7	-5.3	14.9
2014	71231	617	1028	-411	4	8.7	14.4	-5.8	6.5
2015	70772	621	1066	-445	4	8.8	15.1	-6.3	6.4
2016	70319	627	1105	-478	3	8.9	15.7	-6.8	4.8
2017	69842	519	1103	-584	0	7.4	15.8	-8.4	0.0
2018	69384	619	988	-369	2	8.9	14.2	-5.3	3.2
2019	68926	554	1108	-554	3	8.0	16.1	-8.1	5.4
2020	68378	583	1195	-612	10	8.5	17.5	-9.0	17.2
2021	67563	531	1485	-954	3	7.9	22.0	-14.1	5.6
2022	64893	523	1146	-623	1	8.1	17.7	-9.6	1.9

Source: Vital Statistics, SORS

Definitions

Population size

Number of population in the respective year. The data on the number of population in 1961, 1971, 1981 and 1991 are census data, while for the inter-census years the number of population was calculated as an average inter-census difference. From 2002 are given the population estimates that were calculated according to the census of population results and the annual statistics of natural mechanical population movements.

Livebirths

Absolute number of live births in the course of a year. Live born child means a child giving vital signs after birth (breathing, i.e. heartbeat), even for the shortest time, regardless the mother's pregnancy duration.

Deaths

Absolute number of deaths in the course of a year. Deceased is a person that whenever after having been born live, shows permanently stopped vital signs.

Natural increase

Natural population increase is the number of live births minus the number of deaths.

Infants deaths

Absolute number of infants deaths in the course of a year. Deceased infant is a child that after having been born live and before aged one year, shows permanently stopped vital signs.

Livebirths, per 1 000 population

Livebirths rate is the ratio of the number of live births and the population size in the respective year. The number of live births is divided by the population size and then multiplied by 1000.

Deaths, per 1 000 population

General mortality rate represents the ratio between the number of deaths and the population size in the respective year. The number of deaths is divided by population size and then multiplied by 1000.

Natural increase, per 1 000 population

Natural population increase rate is the difference between the number of live births and the number of deaths, in relation to the population size in the respective year.

Natural population increase rate = (number of live births - number of deaths) / population size * 1000

Infants deaths, per 1 000 livebirths

Infant mortality rate is the ratio of deceased children under 1 year of age and live births in the respective year. The mortality rate is expressed per 1000 live births.

Infant mortality rate = (number of deceased children under 1 year of age / number of live births) * 1000

Additional info:



Download all database data in Excel format:

[Data](#)



DevInfo profiles:

devinfo.stat.gov.rs/SerbiaProfileLauncher/?lang=en



DevInfo online database:

devinfo.stat.gov.rs/vitalna



For additional information or questions please contact:

devinfo@stat.gov.rs