

Natural changes of population 1961 – 2022

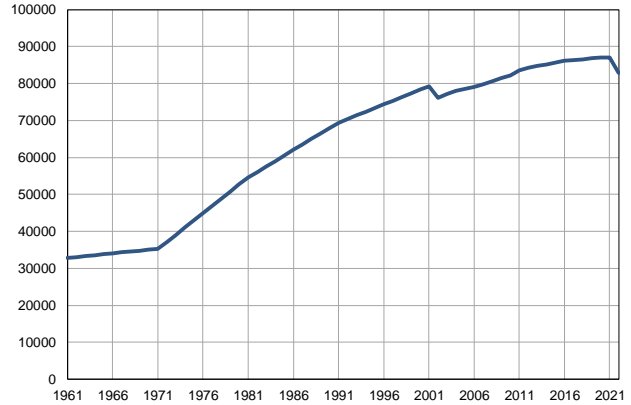
Profile
July 2023

Grocka

	1961	2022
Population size	32836	82835
Livebirths, Number	530	757
Deaths, Number	305	1072
Natural increase, Number	225	-315
Infants deaths, Number	34	5
Livebirths, per 1,000 population	16	9
Deaths, per 1,000 population	9	13
Natural increase, per 1,000 population	7	-4
Infants deaths, per 1,000 livebirths	64	7

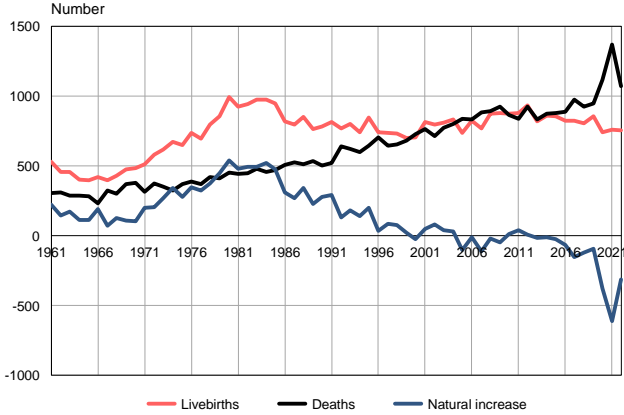
Source: Vital Statistics, SORS

Population size, 1961–2022



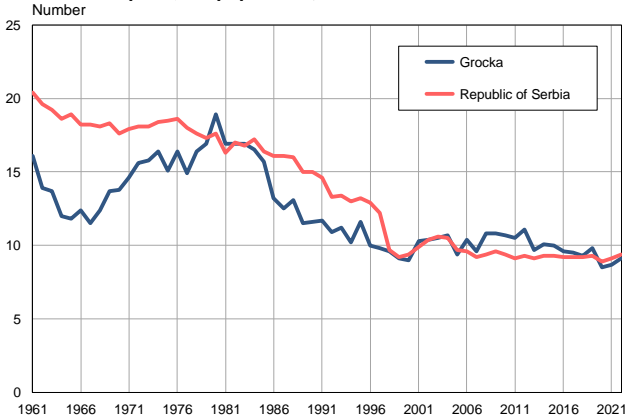
Source: Vital Statistics, SORS

Livebirths, deaths and natural increase, 1961–2022



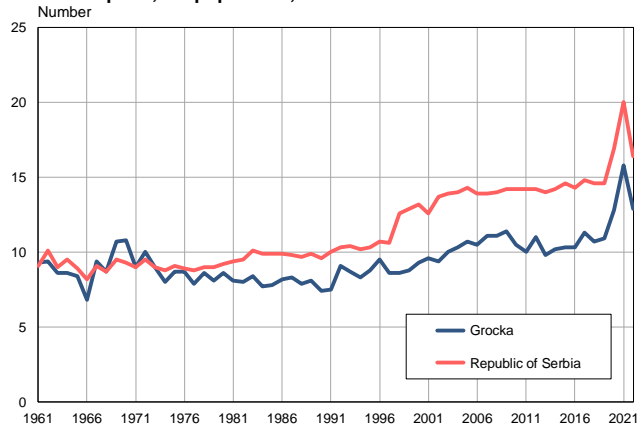
Source: Vital Statistics, SORS

Livebirths per 1,000 population, 1961–2022



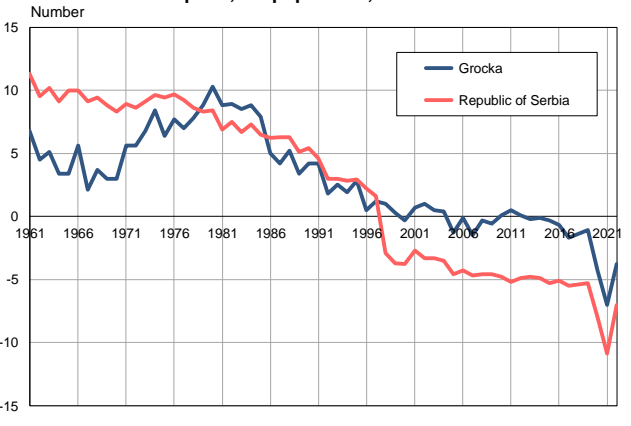
Source: Vital Statistics, SORS

Deaths per 1,000 population, 1961–2022



Source: Vital Statistics, SORS

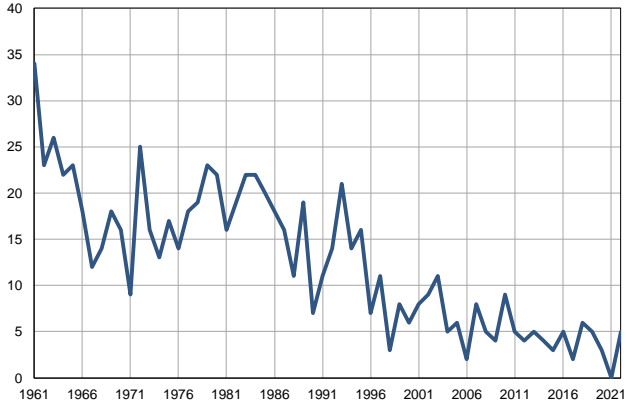
Natural increase per 1,000 population, 1961–2022



Source: Vital Statistics, SORS

Infants deaths, 1961–2022

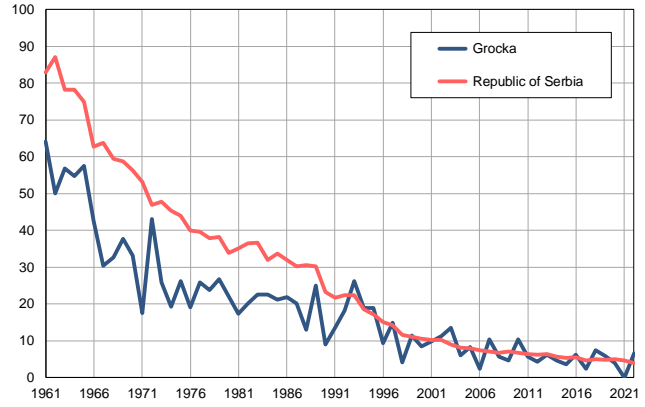
Number



Source: Vital Statistics, SORS

Infants deaths per 1,000 livebirths, 1961–2022

Number



Source: Vital Statistics, SORS

Table. Natural changes of population, Grocka

Year	Number of population	Livebirths	Deaths	Natural increase	Infants deaths	per 1000 population			Infant deaths per 1000 livebirths
						Livebirths	Deaths	Natural increase	
1961	32836	530	305	225	34	16.1	9.3	6.8	64.2
1962	33080	459	311	148	23	13.9	9.4	4.5	50.1
1963	33324	458	286	172	26	13.7	8.6	5.1	56.8
1964	33568	402	289	113	22	12.0	8.6	3.4	54.7
1965	33812	400	285	115	23	11.8	8.4	3.4	57.5
1966	34056	423	231	192	18	12.4	6.8	5.6	42.6
1967	34300	396	323	73	12	11.5	9.4	2.1	30.3
1968	34543	430	301	129	14	12.4	8.7	3.7	32.6
1969	34787	478	371	107	18	13.7	10.7	3.0	37.7
1970	35031	483	378	105	16	13.8	10.8	3.0	33.1
1971	35275	515	316	199	9	14.6	9.0	5.6	17.5
1972	37207	580	373	207	25	15.6	10.0	5.6	43.1
1973	39140	619	351	268	16	15.8	9.0	6.8	25.8
1974	41072	672	327	345	13	16.4	8.0	8.4	19.3
1975	43005	650	372	278	17	15.1	8.7	6.4	26.2
1976	44937	738	391	347	14	16.4	8.7	7.7	19.0
1977	46869	697	370	327	18	14.9	7.9	7.0	25.8
1978	48802	798	421	377	19	16.4	8.6	7.8	23.8
1979	50734	859	410	449	23	16.9	8.1	8.8	26.8
1980	52667	994	452	542	22	18.9	8.6	10.3	22.1
1981	54599	924	444	480	16	16.9	8.1	8.8	17.3
1982	56084	946	450	496	19	16.9	8.0	8.9	20.1
1983	57569	975	482	493	22	16.9	8.4	8.5	22.6
1984	59054	976	456	520	22	16.5	7.7	8.8	22.5
1985	60539	949	471	478	20	15.7	7.8	7.9	21.1
1986	62024	821	508	313	18	13.2	8.2	5.0	21.9
1987	63509	795	525	270	16	12.5	8.3	4.2	20.1
1988	64993	854	511	343	11	13.1	7.9	5.2	12.9
1989	66478	764	536	228	19	11.5	8.1	3.4	24.9
1990	67963	785	504	281	7	11.6	7.4	4.2	8.9
1991	69448	815	521	294	11	11.7	7.5	4.2	13.5
1992	70432	770	639	131	14	10.9	9.1	1.8	18.2
1993	71416	803	621	182	21	11.2	8.7	2.5	26.2
1994	72400	741	599	142	14	10.2	8.3	1.9	18.9
1995	73384	848	647	201	16	11.6	8.8	2.8	18.9
1996	74368	741	707	34	7	10.0	9.5	0.5	9.4
1997	75351	736	648	88	11	9.8	8.6	1.2	14.9
1998	76335	732	655	77	3	9.6	8.6	1.0	4.1
1999	77319	702	681	21	8	9.1	8.8	0.3	11.4
2000	78303	704	727	-23	6	9.0	9.3	-0.3	8.5
2001	79287	814	763	51	8	10.3	9.6	0.7	9.8
2002	76087	795	715	80	9	10.4	9.4	1.0	11.3
2003	77189	813	774	39	11	10.5	10.0	0.5	13.5
2004	78028	836	803	33	5	10.7	10.3	0.4	6.0
2005	78605	736	838	-102	6	9.4	10.7	-1.3	8.2

Table. Natural changes of population, Grocka

Year	Number of population	Livebirths	Deaths	Natural increase	Infants deaths	per 1000 population			Infant deaths per 1000 livebirths
						Livebirths	Deaths	Natural increase	
2006	79153	825	833	-8	2	10.4	10.5	-0.1	2.4
2007	79819	770	883	-113	8	9.6	11.1	-1.5	10.4
2008	80630	874	895	-21	5	10.8	11.1	-0.3	5.7
2009	81424	878	927	-49	4	10.8	11.4	-0.6	4.6
2010	82129	875	864	11	9	10.7	10.5	0.1	10.3
2011	83633	879	840	39	5	10.5	10.0	0.5	5.7
2012	84351	934	924	10	4	11.1	11.0	0.1	4.3
2013	84833	819	835	-16	5	9.7	9.8	-0.2	6.1
2014	85214	861	873	-12	4	10.1	10.2	-0.1	4.6
2015	85654	855	881	-26	3	10.0	10.3	-0.3	3.5
2016	86099	826	890	-64	5	9.6	10.3	-0.7	6.1
2017	86391	825	975	-150	2	9.5	11.3	-1.7	2.4
2018	86585	808	926	-118	6	9.3	10.7	-1.4	7.4
2019	86908	855	947	-92	5	9.8	10.9	-1.1	5.8
2020	87102	742	1117	-375	3	8.5	12.8	-4.3	4.0
2021	87037	759	1372	-613	0	8.7	15.8	-7.0	0.0
2022	82835	757	1072	-315	5	9.1	12.9	-3.8	6.6

Source: Vital Statistics, SORS

Definitions

Population size

Number of population in the respective year. The data on the number of population in 1961, 1971, 1981 and 1991 are census data, while for the inter-census years the number of population was calculated as an average inter-census difference. From 2002 are given the population estimates that were calculated according to the census of population results and the annual statistics of natural mechanical population movements.

Livebirths

Absolute number of live births in the course of a year. Live born child means a child giving vital signs after birth (breathing, i.e. heartbeat), even for the shortest time, regardless the mother's pregnancy duration.

Deaths

Absolute number of deaths in the course of a year. Deceased is a person that whenever after having been born live, shows permanently stopped vital signs.

Natural increase

Natural population increase is the number of live births minus the number of deaths.

Infants deaths

Absolute number of infants deaths in the course of a year. Deceased infant is a child that after having been born live and before aged one year, shows permanently stopped vital signs.

Livebirths, per 1 000 population

Livebirths rate is the ratio of the number of live births and the population size in the respective year. The number of live births is divided by the population size and then multiplied by 1000.

Deaths, per 1 000 population

General mortality rate represents the ratio between the number of deaths and the population size in the respective year. The number of deaths is divided by population size and then multiplied by 1000.

Natural increase, per 1 000 population

Natural population increase rate is the difference between the number of live births and the number of deaths, in relation to the population size in the respective year.

Natural population increase rate = (number of live births - number of deaths) / population size * 1000

Infants deaths, per 1 000 livebirths

Infant mortality rate is the ratio of deceased children under 1 year of age and live births in the respective year. The mortality rate is expressed per 1000 live births.

Infant mortality rate = (number of deceased children under 1 year of age / number of live births) * 1000

Additional info:



Download all database data in Excel format:

[Data](#)



DevInfo profiles:

devinfo.stat.gov.rs/SerbiaProfileLauncher/?lang=en



DevInfo online database:

devinfo.stat.gov.rs/vitalna



For additional information or questions please contact:

devinfo@stat.gov.rs