

# Natural changes of population 1961 – 2022

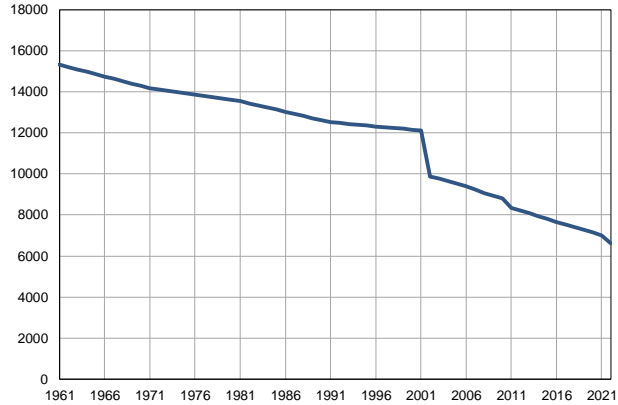
Profile  
July 2023

## Golubac

	1961	2022
Population size	15320	6638
Livebirths, Number	207	33
Deaths, Number	211	158
Natural increase, Number	-4	-125
Infants deaths, Number	11	0
Livebirths, per 1,000 population	14	5
Deaths, per 1,000 population	14	24
Natural increase, per 1,000 population	0	-19
Infants deaths, per 1,000 livebirths	53	0

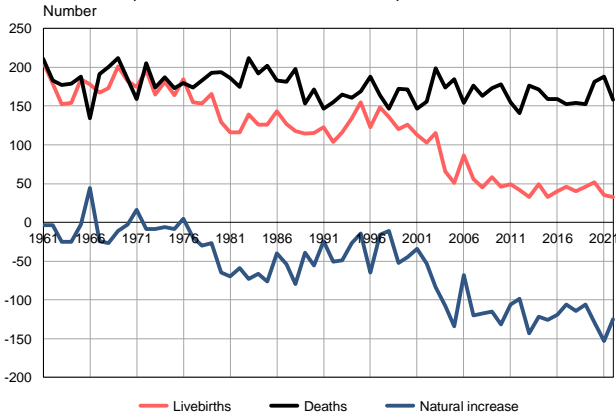
Source: Vital Statistics, SORS

Population size, 1961–2022



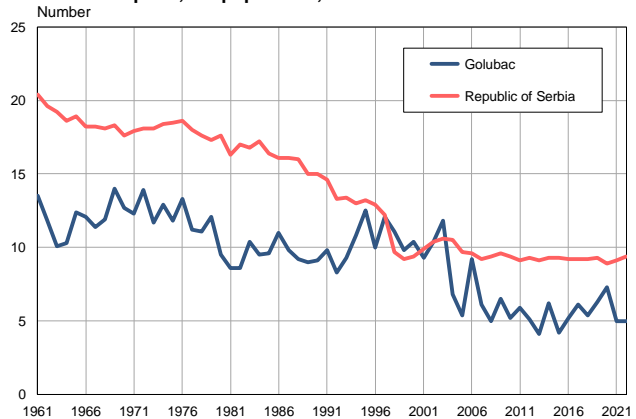
Source: Vital Statistics, SORS

Livebirths, deaths and natural increase, 1961–2022



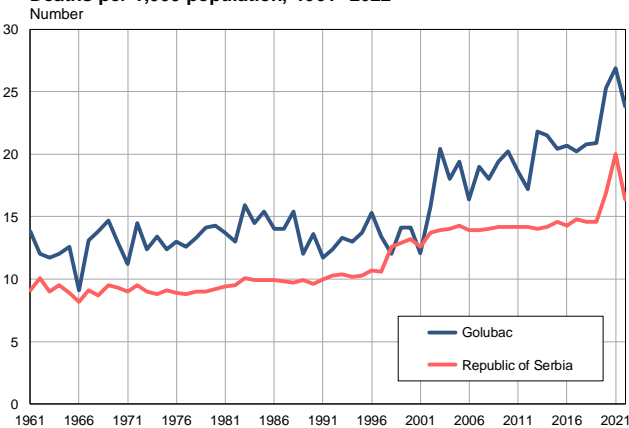
Source: Vital Statistics, SORS

Livebirths per 1,000 population, 1961–2022



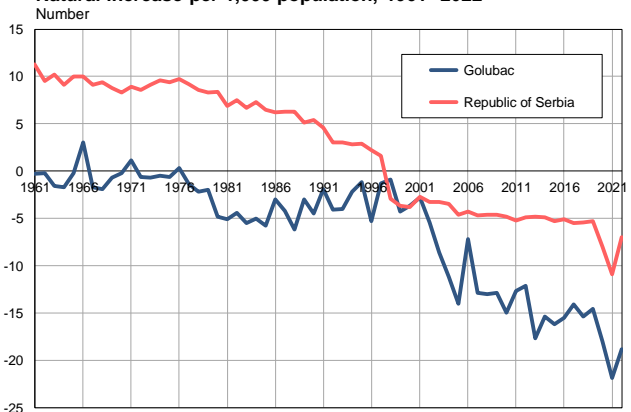
Source: Vital Statistics, SORS

Deaths per 1,000 population, 1961–2022



Source: Vital Statistics, SORS

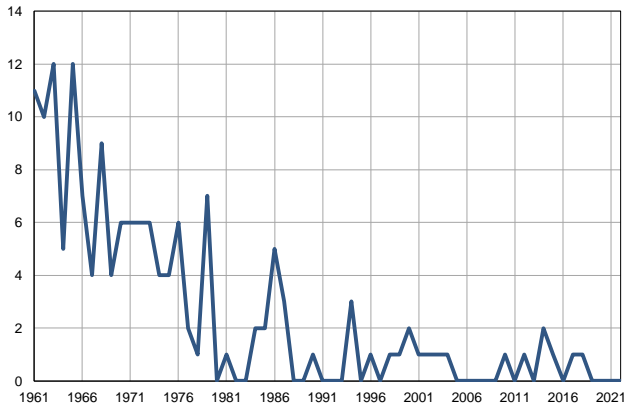
Natural increase per 1,000 population, 1961–2022



Source: Vital Statistics, SORS

**Infants deaths, 1961–2022**

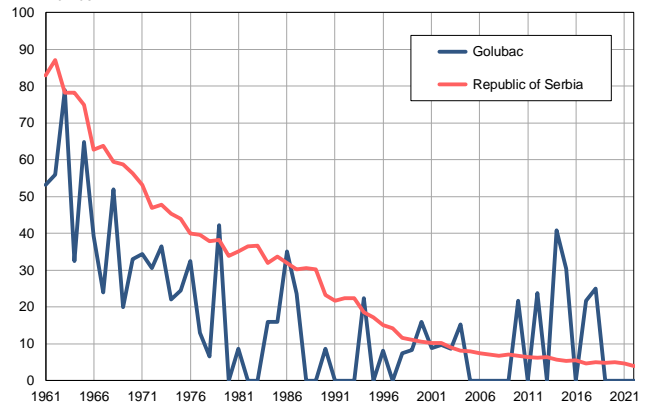
Number



Source: Vital Statistics, SORS

**Infants deaths per 1,000 livebirths, 1961–2022**

Number



Source: Vital Statistics, SORS

**Table. Natural changes of population, Golubac**

Year	Number of population	Livebirths	Deaths	Natural increase	Infants deaths	per 1000 population			Infant deaths per 1000 livebirths
						Livebirths	Deaths	Natural increase	
1961	15320	207	211	-4	11	13.5	13.8	-0.3	53.1
1962	15207	179	183	-4	10	11.8	12.0	-0.2	55.9
1963	15092	152	177	-25	12	10.1	11.7	-1.6	78.9
1964	14977	154	179	-25	5	10.3	12.0	-1.7	32.5
1965	14863	185	188	-3	12	12.4	12.6	-0.2	64.9
1966	14749	178	134	44	7	12.1	9.1	3.0	39.3
1967	14635	167	191	-24	4	11.4	13.1	-1.7	24.0
1968	14521	173	200	-27	9	11.9	13.8	-1.9	52.0
1969	14406	201	212	-11	4	14.0	14.7	-0.7	19.9
1970	14292	182	185	-3	6	12.7	12.9	-0.2	33.0
1971	14178	175	159	16	6	12.3	11.2	1.1	34.3
1972	14114	196	205	-9	6	13.9	14.5	-0.6	30.6
1973	14051	165	174	-9	6	11.7	12.4	-0.7	36.4
1974	13987	181	187	-6	4	12.9	13.4	-0.5	22.1
1975	13923	164	173	-9	4	11.8	12.4	-0.6	24.4
1976	13860	185	180	5	6	13.3	13.0	0.3	32.4
1977	13796	155	174	-19	2	11.2	12.6	-1.4	12.9
1978	13731	153	183	-30	1	11.1	13.3	-2.2	6.5
1979	13668	166	193	-27	7	12.1	14.1	-2.0	42.2
1980	13605	129	194	-65	0	9.5	14.3	-4.8	0.0
1981	13541	116	186	-70	1	8.6	13.7	-5.1	8.6
1982	13438	116	175	-59	0	8.6	13.0	-4.4	0.0
1983	13335	139	212	-73	0	10.4	15.9	-5.5	0.0
1984	13233	126	192	-66	2	9.5	14.5	-5.0	15.9
1985	13130	126	202	-76	2	9.6	15.4	-5.8	15.9
1986	13027	143	183	-40	5	11.0	14.0	-3.0	35.0
1987	12924	127	181	-54	3	9.8	14.0	-4.2	23.6
1988	12821	118	198	-80	0	9.2	15.4	-6.2	0.0
1989	12719	114	153	-39	0	9.0	12.0	-3.0	0.0
1990	12616	115	171	-56	1	9.1	13.6	-4.5	8.7
1991	12513	123	147	-24	0	9.8	11.7	-1.9	0.0
1992	12473	104	155	-51	0	8.3	12.4	-4.1	0.0
1993	12433	116	165	-49	0	9.3	13.3	-4.0	0.0
1994	12394	134	161	-27	3	10.8	13.0	-2.2	22.4
1995	12354	155	169	-14	0	12.5	13.7	-1.2	0.0
1996	12314	123	188	-65	1	10.0	15.3	-5.3	8.1
1997	12274	148	164	-16	0	12.1	13.4	-1.3	0.0
1998	12234	136	147	-11	1	11.1	12.0	-0.9	7.4
1999	12194	120	172	-52	1	9.8	14.1	-4.3	8.3
2000	12155	126	171	-45	2	10.4	14.1	-3.7	15.9
2001	12115	113	147	-34	1	9.3	12.1	-2.8	8.8
2002	9883	103	156	-53	1	10.4	15.8	-5.4	9.7
2003	9775	115	199	-84	1	11.8	20.4	-8.6	8.7
2004	9658	66	174	-108	1	6.8	18.0	-11.2	15.2
2005	9523	51	185	-134	0	5.4	19.4	-14.0	0.0

**Table. Natural changes of population, Golubac**

Year	Number of population	Livebirths	Deaths	Natural increase	Infants deaths	per 1000 population			Infant deaths per 1000 livebirths
						Livebirths	Deaths	Natural increase	
2006	9392	86	154	-68	0	9.2	16.4	-7.2	0.0
2007	9248	56	176	-120	0	6.1	19.0	-12.9	0.0
2008	9073	45	163	-118	0	5.0	18.0	-13.0	0.0
2009	8931	58	173	-115	0	6.5	19.4	-12.9	0.0
2010	8803	46	178	-132	1	5.2	20.2	-15.0	21.7
2011	8337	49	155	-106	0	5.9	18.6	-12.7	0.0
2012	8210	42	141	-99	1	5.1	17.2	-12.1	23.8
2013	8091	33	176	-143	0	4.1	21.8	-17.7	0.0
2014	7940	49	171	-122	2	6.2	21.5	-15.4	40.8
2015	7795	33	159	-126	1	4.2	20.4	-16.2	30.3
2016	7668	40	159	-119	0	5.2	20.7	-15.5	0.0
2017	7541	46	152	-106	1	6.1	20.2	-14.1	21.7
2018	7418	40	154	-114	1	5.4	20.8	-15.4	25.0
2019	7290	46	152	-106	0	6.3	20.9	-14.6	0.0
2020	7146	52	181	-129	0	7.3	25.3	-18.0	0.0
2021	7000	35	188	-153	0	5.0	26.9	-21.9	0.0
2022	6638	33	158	-125	0	5.0	23.8	-18.8	0.0

Source: Vital Statistics, SORS

## Definitions

### Population size

Number of population in the respective year. The data on the number of population in 1961, 1971, 1981 and 1991 are census data, while for the inter-census years the number of population was calculated as an average inter-census difference. From 2002 are given the population estimates that were calculated according to the census of population results and the annual statistics of natural mechanical population movements.

### Livebirths

Absolute number of live births in the course of a year. Live born child means a child giving vital signs after birth (breathing, i.e. heartbeat), even for the shortest time, regardless the mother's pregnancy duration.

### Deaths

Absolute number of deaths in the course of a year. Deceased is a person that whenever after having been born live, shows permanently stopped vital signs.

### Natural increase

Natural population increase is the number of live births minus the number of deaths.

### Infants deaths

Absolute number of infants deaths in the course of a year. Deceased infant is a child that after having been born live and before aged one year, shows permanently stopped vital signs.

### Livebirths, per 1 000 population

Livebirths rate is the ratio of the number of live births and the population size in the respective year. The number of live births is divided by the population size and then multiplied by 1000.

### Deaths, per 1 000 population

General mortality rate represents the ratio between the number of deaths and the population size in the respective year. The number of deaths is divided by population size and then multiplied by 1000.

### Natural increase, per 1 000 population

Natural population increase rate is the difference between the number of live births and the number of deaths, in relation to the population size in the respective year.

Natural population increase rate = (number of live births - number of deaths) / population size \* 1000

### Infants deaths, per 1 000 livebirths

Infant mortality rate is the ratio of deceased children under 1 year of age and live births in the respective year. The mortality rate is expressed per 1000 live births.

Infant mortality rate = (number of deceased children under 1 year of age / number of live births) \* 1000

## Additional info:



Download all database data in Excel format:

[Data](#)



DevInfo profiles:

[devinfo.stat.gov.rs/SerbiaProfileLauncher/?lang=en](http://devinfo.stat.gov.rs/SerbiaProfileLauncher/?lang=en)



DevInfo online database:

[devinfo.stat.gov.rs/vitalna](http://devinfo.stat.gov.rs/vitalna)



For additional information or questions please contact:

[devinfo@stat.gov.rs](mailto:devinfo@stat.gov.rs)