

Natural changes of population 1961 – 2022

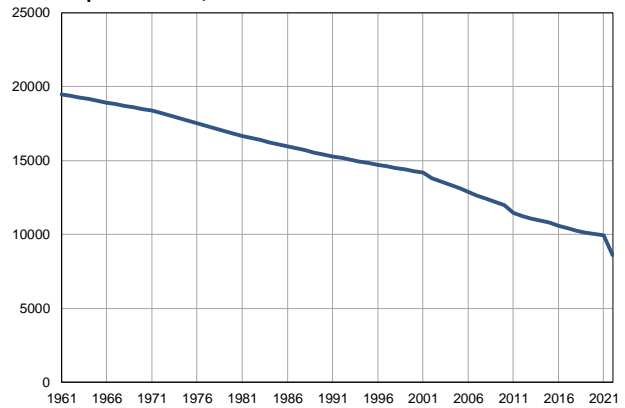
Profile
July 2023

Čoka

	1961	2022
Population size	19482	8589
Livebirths, Number	324	72
Deaths, Number	192	200
Natural increase, Number	132	-128
Infants deaths, Number	19	0
Livebirths, per 1,000 population	17	8
Deaths, per 1,000 population	10	23
Natural increase, per 1,000 population	7	-15
Infants deaths, per 1,000 livebirths	59	0

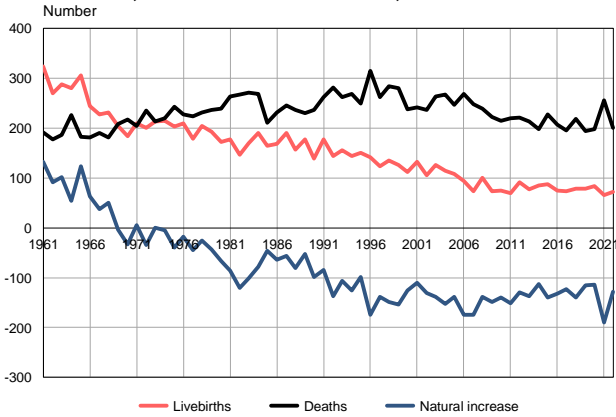
Source: Vital Statistics, SORS

Population size, 1961–2022



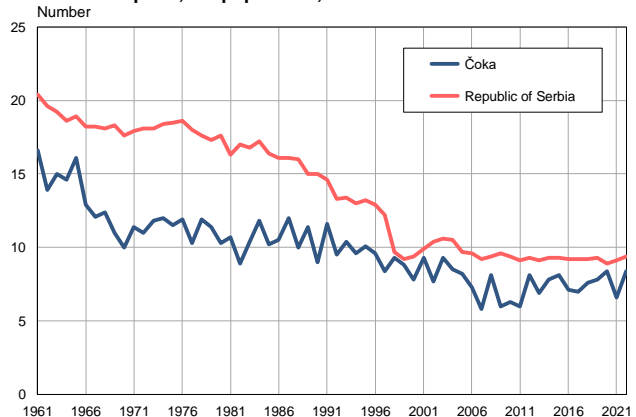
Source: Vital Statistics, SORS

Livebirths, deaths and natural increase, 1961–2022



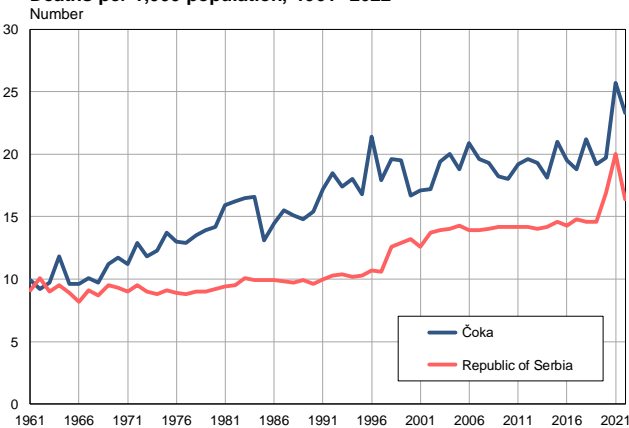
Source: Vital Statistics, SORS

Livebirths per 1,000 population, 1961–2022



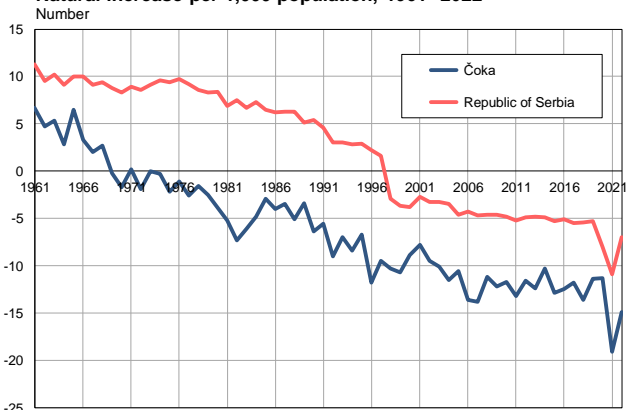
Source: Vital Statistics, SORS

Deaths per 1,000 population, 1961–2022



Source: Vital Statistics, SORS

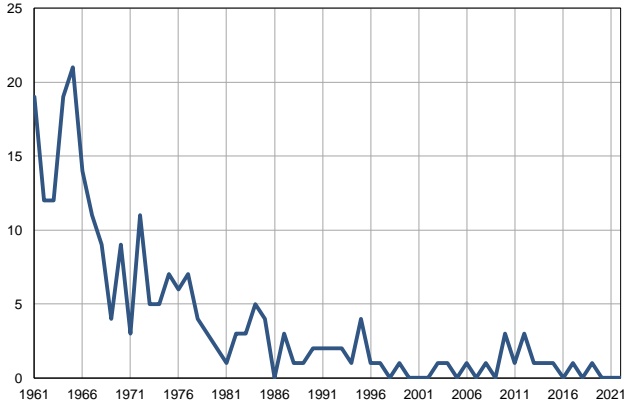
Natural increase per 1,000 population, 1961–2022



Source: Vital Statistics, SORS

Infants deaths, 1961–2022

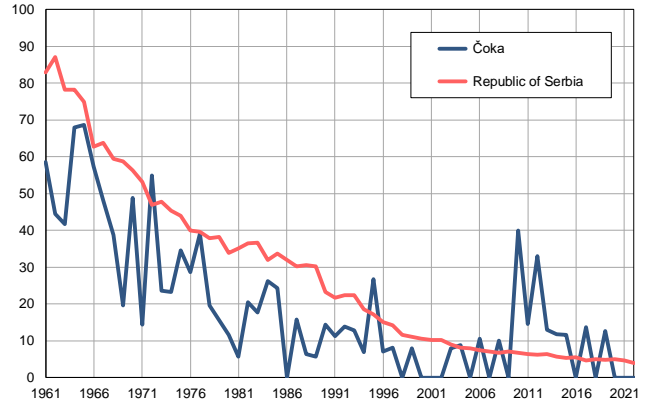
Number



Source: Vital Statistics, SORS

Infants deaths per 1,000 livebirths, 1961–2022

Number



Source: Vital Statistics, SORS

Table. Natural changes of population, Čoka

Year	Number of population	Livebirths	Deaths	Natural increase	Infants deaths	per 1000 population			Infant deaths per 1000 livebirths
						Livebirths	Deaths	Natural increase	
1961	19482	324	192	132	19	16.6	9.9	6.7	58.6
1962	19370	270	178	92	12	13.9	9.2	4.7	44.4
1963	19258	288	186	102	12	15.0	9.7	5.3	41.7
1964	19147	280	226	54	19	14.6	11.8	2.8	67.9
1965	19035	306	183	123	21	16.1	9.6	6.5	68.6
1966	18923	244	181	63	14	12.9	9.6	3.3	57.4
1967	18811	228	190	38	11	12.1	10.1	2.0	48.2
1968	18699	232	181	51	9	12.4	9.7	2.7	38.8
1969	18588	205	208	-3	4	11.0	11.2	-0.2	19.5
1970	18476	184	217	-33	9	10.0	11.7	-1.7	48.9
1971	18364	210	205	5	3	11.4	11.2	0.2	14.3
1972	18193	200	235	-35	11	11.0	12.9	-1.9	55.0
1973	18022	213	213	0	5	11.8	11.8	0.0	23.5
1974	17851	215	220	-5	5	12.0	12.3	-0.3	23.3
1975	17680	203	243	-40	7	11.5	13.7	-2.2	34.5
1976	17508	209	227	-18	6	11.9	13.0	-1.1	28.7
1977	17337	179	224	-45	7	10.3	12.9	-2.6	39.1
1978	17166	205	231	-26	4	11.9	13.5	-1.6	19.5
1979	16995	193	237	-44	3	11.4	13.9	-2.5	15.5
1980	16824	173	239	-66	2	10.3	14.2	-3.9	11.6
1981	16653	178	264	-86	1	10.7	15.9	-5.2	5.6
1982	16515	147	267	-120	3	8.9	16.2	-7.3	20.4
1983	16377	170	271	-101	3	10.4	16.5	-6.1	17.6
1984	16238	191	269	-78	5	11.8	16.6	-4.8	26.2
1985	16100	165	211	-46	4	10.2	13.1	-2.9	24.2
1986	15962	168	232	-64	0	10.5	14.5	-4.0	0.0
1987	15824	190	246	-56	3	12.0	15.5	-3.5	15.8
1988	15686	157	237	-80	1	10.0	15.1	-5.1	6.4
1989	15547	177	230	-53	1	11.4	14.8	-3.4	5.6
1990	15409	139	237	-98	2	9.0	15.4	-6.4	14.4
1991	15271	177	262	-85	2	11.6	17.2	-5.6	11.3
1992	15161	144	281	-137	2	9.5	18.5	-9.0	13.9
1993	15050	156	262	-106	2	10.4	17.4	-7.0	12.8
1994	14940	144	269	-125	1	9.6	18.0	-8.4	6.9
1995	14830	150	249	-99	4	10.1	16.8	-6.7	26.7
1996	14720	141	315	-174	1	9.6	21.4	-11.8	7.1
1997	14609	123	262	-139	1	8.4	17.9	-9.5	8.1
1998	14499	135	284	-149	0	9.3	19.6	-10.3	0.0
1999	14389	126	280	-154	1	8.8	19.5	-10.7	7.9
2000	14279	112	238	-126	0	7.8	16.7	-8.9	0.0
2001	14168	132	242	-110	0	9.3	17.1	-7.8	0.0
2002	13780	106	237	-131	0	7.7	17.2	-9.5	0.0
2003	13575	126	264	-138	1	9.3	19.4	-10.1	7.9
2004	13351	114	267	-153	1	8.5	20.0	-11.5	8.8
2005	13133	108	247	-139	0	8.2	18.8	-10.6	0.0

Table. Natural changes of population, Čoka

Year	Number of population	Livebirths	Deaths	Natural increase	Infants deaths	per 1000 population			Infant deaths per 1000 livebirths
						Livebirths	Deaths	Natural increase	
2006	12896	94	269	-175	1	7.3	20.9	-13.6	10.6
2007	12634	73	248	-175	0	5.8	19.6	-13.8	0.0
2008	12393	100	239	-139	1	8.1	19.3	-11.2	10.0
2009	12175	73	222	-149	0	6.0	18.2	-12.2	0.0
2010	11964	75	215	-140	3	6.3	18.0	-11.7	40.0
2011	11434	69	220	-151	1	6.0	19.2	-13.2	14.5
2012	11247	91	221	-130	3	8.1	19.6	-11.6	33.0
2013	11081	77	214	-137	1	6.9	19.3	-12.4	13.0
2014	10938	85	198	-113	1	7.8	18.1	-10.3	11.8
2015	10795	87	227	-140	1	8.1	21.0	-12.9	11.5
2016	10600	75	207	-132	0	7.1	19.5	-12.5	0.0
2017	10407	73	196	-123	1	7.0	18.8	-11.8	13.7
2018	10262	78	218	-140	0	7.6	21.2	-13.6	0.0
2019	10123	79	194	-115	1	7.8	19.2	-11.4	12.7
2020	10030	84	198	-114	0	8.4	19.7	-11.3	0.0
2021	9943	66	256	-190	0	6.6	25.7	-19.1	0.0
2022	8589	72	200	-128	0	8.4	23.3	-14.9	0.0

Source: Vital Statistics, SORS

Definitions

Population size

Number of population in the respective year. The data on the number of population in 1961, 1971, 1981 and 1991 are census data, while for the inter-census years the number of population was calculated as an average inter-census difference. From 2002 are given the population estimates that were calculated according to the census of population results and the annual statistics of natural mechanical population movements.

Livebirths

Absolute number of live births in the course of a year. Live born child means a child giving vital signs after birth (breathing, i.e. heartbeat), even for the shortest time, regardless the mother's pregnancy duration.

Deaths

Absolute number of deaths in the course of a year. Deceased is a person that whenever after having been born live, shows permanently stopped vital signs.

Natural increase

Natural population increase is the number of live births minus the number of deaths.

Infants deaths

Absolute number of infants deaths in the course of a year. Deceased infant is a child that after having been born live and before aged one year, shows permanently stopped vital signs.

Livebirths, per 1 000 population

Livebirths rate is the ratio of the number of live births and the population size in the respective year. The number of live births is divided by the population size and then multiplied by 1000.

Deaths, per 1 000 population

General mortality rate represents the ratio between the number of deaths and the population size in the respective year. The number of deaths is divided by population size and then multiplied by 1000.

Natural increase, per 1 000 population

Natural population increase rate is the difference between the number of live births and the number of deaths, in relation to the population size in the respective year.

Natural population increase rate = (number of live births - number of deaths) / population size * 1000

Infants deaths, per 1 000 livebirths

Infant mortality rate is the ratio of deceased children under 1 year of age and live births in the respective year. The mortality rate is expressed per 1000 live births.

Infant mortality rate = (number of deceased children under 1 year of age / number of live births) * 1000

Additional info:



Download all database data in Excel format:

[Data](#)



DevInfo profiles:

devinfo.stat.gov.rs/SerbiaProfileLauncher/?lang=en



DevInfo online database:

devinfo.stat.gov.rs/vitalna



For additional information or questions please contact:

devinfo@stat.gov.rs