

# Natural changes of population 1961 – 2022

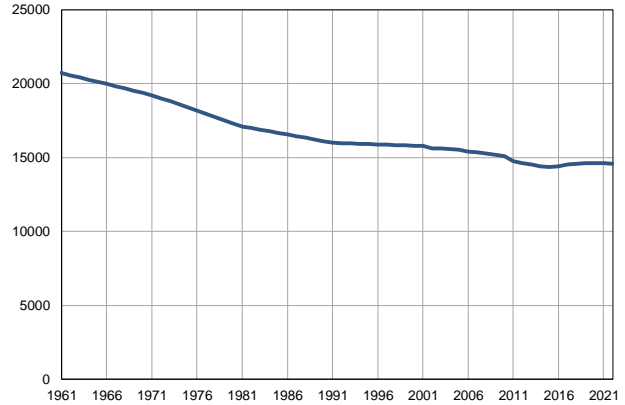
Profile  
July 2023

## Čajetina

	1961	2022
Population size	20716	14583
Livebirths, Number	394	145
Deaths, Number	169	240
Natural increase, Number	225	-95
Infants deaths, Number	20	0
Livebirths, per 1,000 population	19	10
Deaths, per 1,000 population	8	17
Natural increase, per 1,000 population	11	-7
Infants deaths, per 1,000 livebirths	51	0

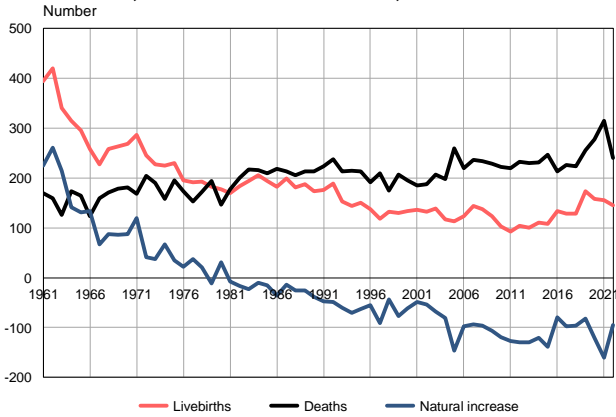
Source: Vital Statistics, SORS

Population size, 1961–2022



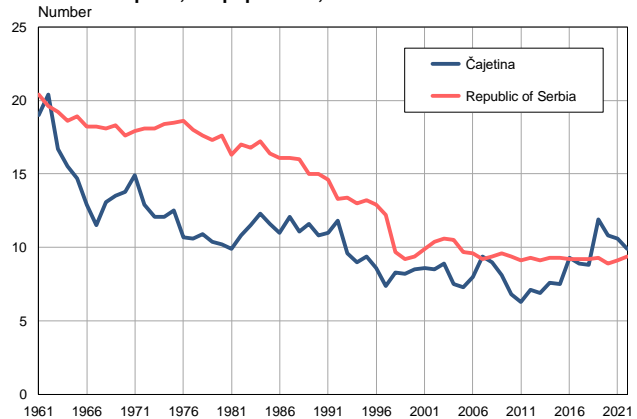
Source: Vital Statistics, SORS

Livebirths, deaths and natural increase, 1961–2022



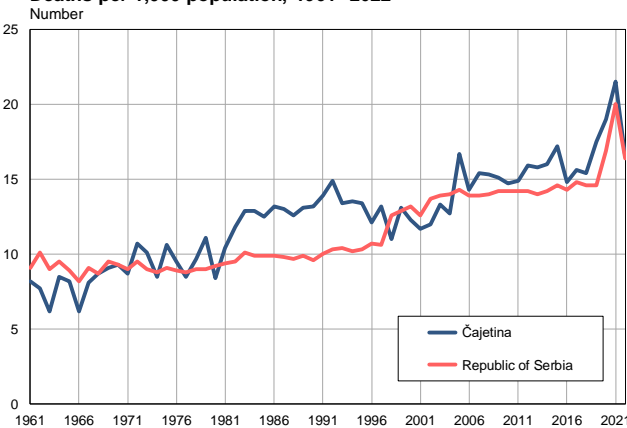
Source: Vital Statistics, SORS

Livebirths per 1,000 population, 1961–2022



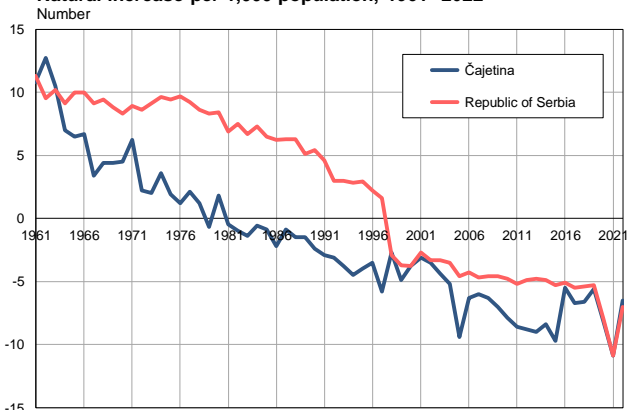
Source: Vital Statistics, SORS

Deaths per 1,000 population, 1961–2022



Source: Vital Statistics, SORS

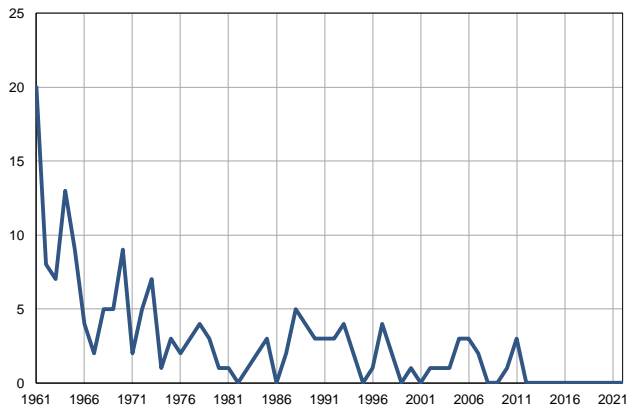
Natural increase per 1,000 population, 1961–2022



Source: Vital Statistics, SORS

**Infants deaths, 1961–2022**

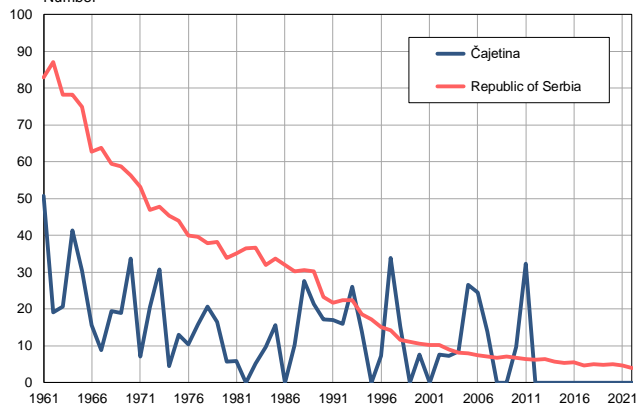
Number



Source: Vital Statistics, SORS

**Infants deaths per 1,000 livebirths, 1961–2022**

Number



Source: Vital Statistics, SORS

**Table. Natural changes of population, Čajetina**

Year	Number of population	Livebirths	Deaths	Natural increase	Infants deaths	per 1000 population			Infant deaths per 1000 livebirths
						Livebirths	Deaths	Natural increase	
1961	20716	394	169	225	20	19.0	8.2	10.8	50.8
1962	20567	420	159	261	8	20.4	7.7	12.7	19.0
1963	20418	340	126	214	7	16.7	6.2	10.5	20.6
1964	20268	315	173	142	13	15.5	8.5	7.0	41.3
1965	20119	296	165	131	9	14.7	8.2	6.5	30.4
1966	19970	258	124	134	4	12.9	6.2	6.7	15.5
1967	19821	227	160	67	2	11.5	8.1	3.4	8.8
1968	19672	258	171	87	5	13.1	8.7	4.4	19.4
1969	19522	264	178	86	5	13.5	9.1	4.4	18.9
1970	19373	268	181	87	9	13.8	9.3	4.5	33.6
1971	19224	287	168	119	2	14.9	8.7	6.2	7.0
1972	19012	245	204	41	5	12.9	10.7	2.2	20.4
1973	18799	228	190	38	7	12.1	10.1	2.0	30.7
1974	18586	225	158	67	1	12.1	8.5	3.6	4.4
1975	18374	230	195	35	3	12.5	10.6	1.9	13.0
1976	18160	195	173	22	2	10.7	9.5	1.2	10.3
1977	17948	191	153	38	3	10.6	8.5	2.1	15.7
1978	17736	193	172	21	4	10.9	9.7	1.2	20.7
1979	17523	182	194	-12	3	10.4	11.1	-0.7	16.5
1980	17310	177	146	31	1	10.2	8.4	1.8	5.6
1981	17098	169	177	-8	1	9.9	10.4	-0.5	5.9
1982	16988	184	200	-16	0	10.8	11.8	-1.0	0.0
1983	16878	194	217	-23	1	11.5	12.9	-1.4	5.2
1984	16767	206	216	-10	2	12.3	12.9	-0.6	9.7
1985	16657	194	209	-15	3	11.6	12.5	-0.9	15.5
1986	16547	182	218	-36	0	11.0	13.2	-2.2	0.0
1987	16437	199	213	-14	2	12.1	13.0	-0.9	10.1
1988	16327	181	206	-25	5	11.1	12.6	-1.5	27.6
1989	16216	188	213	-25	4	11.6	13.1	-1.5	21.3
1990	16106	174	213	-39	3	10.8	13.2	-2.4	17.2
1991	15996	176	223	-47	3	11.0	13.9	-2.9	17.0
1992	15975	189	238	-49	3	11.8	14.9	-3.1	15.9
1993	15954	153	213	-60	4	9.6	13.4	-3.8	26.1
1994	15933	144	215	-71	2	9.0	13.5	-4.5	13.9
1995	15912	150	213	-63	0	9.4	13.4	-4.0	0.0
1996	15891	137	192	-55	1	8.6	12.1	-3.5	7.3
1997	15870	118	209	-91	4	7.4	13.2	-5.8	33.9
1998	15849	132	175	-43	2	8.3	11.0	-2.7	15.2
1999	15828	130	207	-77	0	8.2	13.1	-4.9	0.0
2000	15807	134	195	-61	1	8.5	12.3	-3.8	7.5
2001	15786	136	185	-49	0	8.6	11.7	-3.1	0.0
2002	15629	133	187	-54	1	8.5	12.0	-3.5	7.5
2003	15600	139	207	-68	1	8.9	13.3	-4.4	7.2
2004	15577	117	198	-81	1	7.5	12.7	-5.2	8.5
2005	15509	113	259	-146	3	7.3	16.7	-9.4	26.5

**Table. Natural changes of population, Čajetina**

Year	Number of population	Livebirths	Deaths	Natural increase	Infants deaths	per 1000 population			Infant deaths per 1000 livebirths
						Livebirths	Deaths	Natural increase	
2006	15412	123	220	-97	3	8.0	14.3	-6.3	24.4
2007	15340	144	237	-93	2	9.4	15.4	-6.0	13.9
2008	15273	138	234	-96	0	9.0	15.3	-6.3	0.0
2009	15189	123	229	-106	0	8.1	15.1	-7.0	0.0
2010	15080	103	222	-119	1	6.8	14.7	-7.9	9.7
2011	14735	93	220	-127	3	6.3	14.9	-8.6	32.3
2012	14632	104	233	-129	0	7.1	15.9	-8.8	0.0
2013	14522	100	230	-130	0	6.9	15.8	-9.0	0.0
2014	14413	110	231	-121	0	7.6	16.0	-8.4	0.0
2015	14343	108	247	-139	0	7.5	17.2	-9.7	0.0
2016	14404	134	213	-79	0	9.3	14.8	-5.5	0.0
2017	14509	129	226	-97	0	8.9	15.6	-6.7	0.0
2018	14564	128	224	-96	0	8.8	15.4	-6.6	0.0
2019	14606	174	256	-82	0	11.9	17.5	-5.6	0.0
2020	14620	158	278	-120	0	10.8	19.0	-8.2	0.0
2021	14636	155	315	-160	0	10.6	21.5	-10.9	0.0
2022	14583	145	240	-95	0	9.9	16.5	-6.5	0.0

Source: Vital Statistics, SORS

## Definitions

### Population size

Number of population in the respective year. The data on the number of population in 1961, 1971, 1981 and 1991 are census data, while for the inter-census years the number of population was calculated as an average inter-census difference. From 2002 are given the population estimates that were calculated according to the census of population results and the annual statistics of natural mechanical population movements.

### Livebirths

Absolute number of live births in the course of a year. Live born child means a child giving vital signs after birth (breathing, i.e. heartbeat), even for the shortest time, regardless the mother's pregnancy duration.

### Deaths

Absolute number of deaths in the course of a year. Deceased is a person that whenever after having been born live, shows permanently stopped vital signs.

### Natural increase

Natural population increase is the number of live births minus the number of deaths.

### Infants deaths

Absolute number of infants deaths in the course of a year. Deceased infant is a child that after having been born live and before aged one year, shows permanently stopped vital signs.

### Livebirths, per 1 000 population

Livebirths rate is the ratio of the number of live births and the population size in the respective year. The number of live births is divided by the population size and then multiplied by 1000.

### Deaths, per 1 000 population

General mortality rate represents the ratio between the number of deaths and the population size in the respective year. The number of deaths is divided by population size and then multiplied by 1000.

### Natural increase, per 1 000 population

Natural population increase rate is the difference between the number of live births and the number of deaths, in relation to the population size in the respective year.

Natural population increase rate = (number of live births - number of deaths) / population size \* 1000

### Infants deaths, per 1 000 livebirths

Infant mortality rate is the ratio of deceased children under 1 year of age and live births in the respective year. The mortality rate is expressed per 1000 live births.

Infant mortality rate = (number of deceased children under 1 year of age / number of live births) \* 1000

## Additional info:



Download all database data in Excel format:

[Data](#)



DevInfo profiles:

[devinfo.stat.gov.rs/SerbiaProfileLauncher/?lang=en](http://devinfo.stat.gov.rs/SerbiaProfileLauncher/?lang=en)



DevInfo online database:

[devinfo.stat.gov.rs/vitalna](http://devinfo.stat.gov.rs/vitalna)



For additional information or questions please contact:

[devinfo@stat.gov.rs](mailto:devinfo@stat.gov.rs)