

Natural changes of population 1961 – 2022

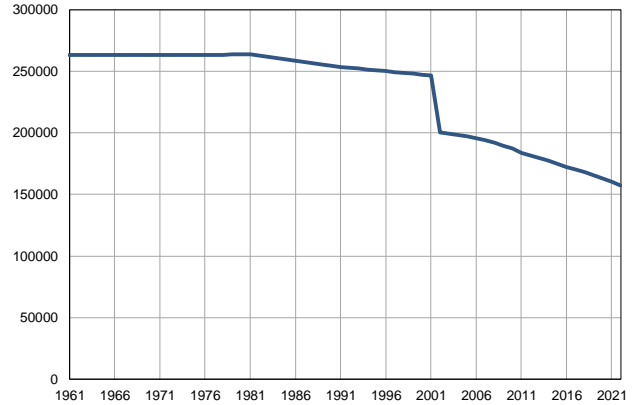
Profile
July 2023

Braničevo

	1961	2022
Population size	263344	157064
Livebirths, Number	3402	1186
Deaths, Number	2860	3235
Natural increase, Number	542	-2049
Infants deaths, Number	189	2
Livebirths, per 1,000 population	13	8
Deaths, per 1,000 population	11	21
Natural increase, per 1,000 population	2	-13
Infants deaths, per 1,000 livebirths	56	2

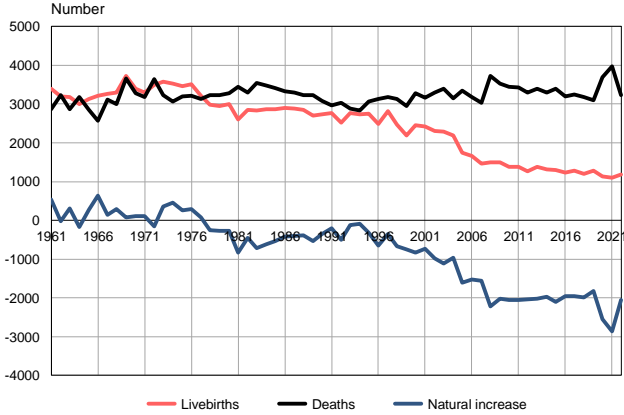
Source: Vital Statistics, SORS

Population size, 1961–2022



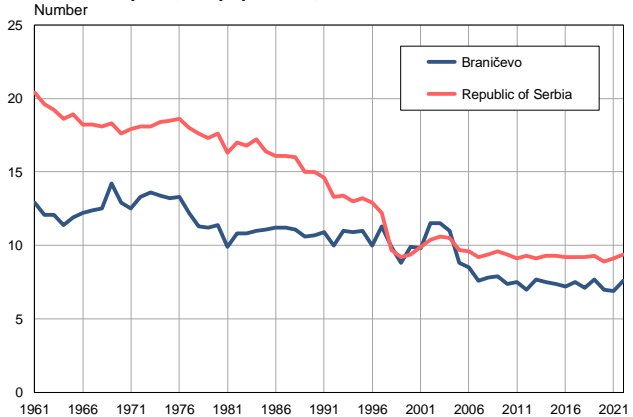
Source: Vital Statistics, SORS

Livebirths, deaths and natural increase, 1961–2022



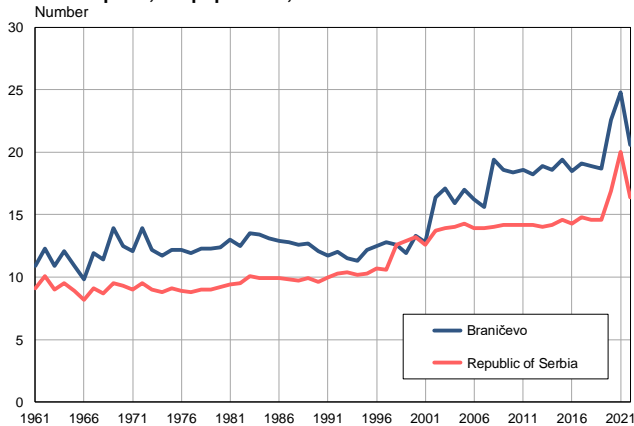
Source: Vital Statistics, SORS

Livebirths per 1,000 population, 1961–2022



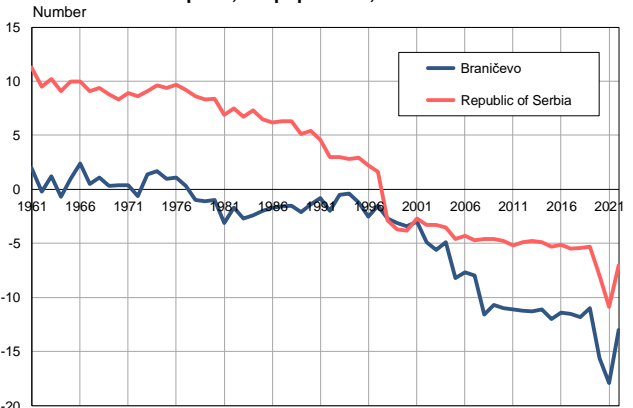
Source: Vital Statistics, SORS

Deaths per 1,000 population, 1961–2022



Source: Vital Statistics, SORS

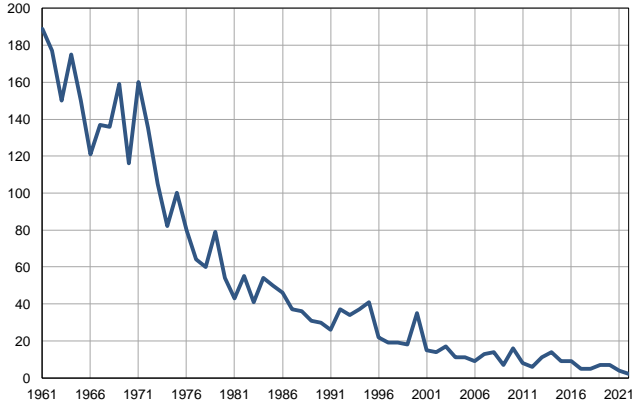
Natural increase per 1,000 population, 1961–2022



Source: Vital Statistics, SORS

Infants deaths, 1961–2022

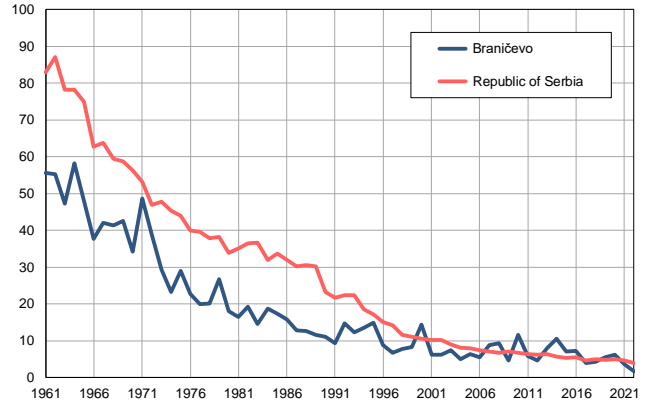
Number



Source: Vital Statistics, SORS

Infants deaths per 1,000 livebirths, 1961–2022

Number



Source: Vital Statistics, SORS

Table. Natural changes of population, Braničevo

Year	Number of population	Livebirths	Deaths	Natural increase	Infants deaths	per 1000 population			Infant deaths per 1000 livebirths
						Livebirths	Deaths	Natural increase	
1961	263344	3402	2860	542	189	12.9	10.9	2.0	55.6
1962	263311	3198	3229	-31	177	12.1	12.3	-0.2	55.3
1963	263278	3173	2860	313	150	12.1	10.9	1.2	47.3
1964	263245	3004	3173	-169	175	11.4	12.1	-0.7	58.3
1965	263212	3132	2857	275	150	11.9	10.9	1.0	47.9
1966	263180	3215	2575	640	121	12.2	9.8	2.4	37.6
1967	263147	3264	3121	143	137	12.4	11.9	0.5	42.0
1968	263114	3289	2992	297	136	12.5	11.4	1.1	41.3
1969	263081	3730	3659	71	159	14.2	13.9	0.3	42.6
1970	263048	3394	3286	108	116	12.9	12.5	0.4	34.2
1971	263015	3290	3187	103	160	12.5	12.1	0.4	48.6
1972	263081	3489	3645	-156	135	13.3	13.9	-0.6	38.7
1973	263147	3578	3222	356	105	13.6	12.2	1.4	29.3
1974	263214	3529	3072	457	82	13.4	11.7	1.7	23.2
1975	263280	3464	3200	264	100	13.2	12.2	1.0	28.9
1976	263346	3503	3213	290	80	13.3	12.2	1.1	22.8
1977	263412	3211	3136	75	64	12.2	11.9	0.3	19.9
1978	263478	2980	3236	-256	60	11.3	12.3	-1.0	20.1
1979	263545	2953	3229	-276	79	11.2	12.3	-1.1	26.8
1980	263611	3002	3276	-274	54	11.4	12.4	-1.0	18.0
1981	263677	2609	3436	-827	43	9.9	13.0	-3.1	16.5
1982	262659	2843	3289	-446	55	10.8	12.5	-1.7	19.3
1983	261640	2830	3544	-714	41	10.8	13.5	-2.7	14.5
1984	260622	2866	3484	-618	54	11.0	13.4	-2.4	18.8
1985	259603	2870	3410	-540	50	11.1	13.1	-2.0	17.4
1986	258585	2905	3328	-423	46	11.2	12.9	-1.7	15.8
1987	257566	2885	3296	-411	37	11.2	12.8	-1.6	12.8
1988	256548	2846	3237	-391	36	11.1	12.6	-1.5	12.6
1989	255530	2698	3233	-535	31	10.6	12.7	-2.1	11.5
1990	254511	2734	3085	-351	30	10.7	12.1	-1.4	11.0
1991	253492	2762	2972	-210	26	10.9	11.7	-0.8	9.4
1992	252812	2521	3028	-507	37	10.0	12.0	-2.0	14.7
1993	252132	2774	2889	-115	34	11.0	11.5	-0.5	12.3
1994	251452	2735	2829	-94	37	10.9	11.3	-0.4	13.5
1995	250772	2750	3068	-318	41	11.0	12.2	-1.2	14.9
1996	250092	2489	3137	-648	22	10.0	12.5	-2.5	8.8
1997	249411	2822	3180	-358	19	11.3	12.8	-1.5	6.7
1998	248731	2464	3126	-662	19	9.9	12.6	-2.7	7.7
1999	248051	2193	2945	-752	18	8.8	11.9	-3.1	8.2
2000	247371	2447	3280	-833	35	9.9	13.3	-3.4	14.3
2001	246691	2416	3156	-740	15	9.8	12.8	-3.0	6.2
2002	200454	2311	3296	-985	14	11.5	16.4	-4.9	6.1
2003	199347	2287	3400	-1113	17	11.5	17.1	-5.6	7.4
2004	198400	2181	3152	-971	11	11.0	15.9	-4.9	5.0
2005	197194	1742	3351	-1609	11	8.8	17.0	-8.2	6.3

Table. Natural changes of population, Braničevo

Year	Number of population	Livebirths	Deaths	Natural increase	Infants deaths	per 1000 population			Infant deaths per 1000 livebirths
						Livebirths	Deaths	Natural increase	
2006	195570	1660	3178	-1518	9	8.5	16.2	-7.7	5.4
2007	193944	1470	3030	-1560	13	7.6	15.6	-8.0	8.8
2008	191906	1499	3724	-2225	14	7.8	19.4	-11.6	9.3
2009	189556	1501	3519	-2018	7	7.9	18.6	-10.7	4.7
2010	187341	1385	3445	-2060	16	7.4	18.4	-11.0	11.6
2011	183860	1378	3428	-2050	8	7.5	18.6	-11.1	5.8
2012	181666	1266	3301	-2035	6	7.0	18.2	-11.2	4.7
2013	179451	1375	3395	-2020	11	7.7	18.9	-11.3	8.0
2014	177217	1321	3288	-1967	14	7.5	18.6	-11.1	10.6
2015	174888	1292	3400	-2108	9	7.4	19.4	-12.0	7.0
2016	172515	1237	3197	-1960	9	7.2	18.5	-11.4	7.3
2017	170207	1284	3245	-1961	5	7.5	19.1	-11.5	3.9
2018	167922	1195	3176	-1981	5	7.1	18.9	-11.8	4.2
2019	165635	1275	3093	-1818	7	7.7	18.7	-11.0	5.5
2020	163058	1137	3690	-2553	7	7.0	22.6	-15.6	6.2
2021	160070	1107	3968	-2861	4	6.9	24.8	-17.9	3.6
2022	157064	1186	3235	-2049	2	7.6	20.6	-13.0	1.7

Source: Vital Statistics, SORS

Definitions

Population size

Number of population in the respective year. The data on the number of population in 1961, 1971, 1981 and 1991 are census data, while for the inter-census years the number of population was calculated as an average inter-census difference. From 2002 are given the population estimates that were calculated according to the census of population results and the annual statistics of natural mechanical population movements.

Livebirths

Absolute number of live births in the course of a year. Live born child means a child giving vital signs after birth (breathing, i.e. heartbeat), even for the shortest time, regardless the mother's pregnancy duration.

Deaths

Absolute number of deaths in the course of a year. Deceased is a person that whenever after having been born live, shows permanently stopped vital signs.

Natural increase

Natural population increase is the number of live births minus the number of deaths.

Infants deaths

Absolute number of infants deaths in the course of a year. Deceased infant is a child that after having been born live and before aged one year, shows permanently stopped vital signs.

Livebirths, per 1 000 population

Livebirths rate is the ratio of the number of live births and the population size in the respective year. The number of live births is divided by the population size and then multiplied by 1000.

Deaths, per 1 000 population

General mortality rate represents the ratio between the number of deaths and the population size in the respective year. The number of deaths is divided by population size and then multiplied by 1000.

Natural increase, per 1 000 population

Natural population increase rate is the difference between the number of live births and the number of deaths, in relation to the population size in the respective year.

Natural population increase rate = (number of live births - number of deaths) / population size * 1000

Infants deaths, per 1 000 livebirths

Infant mortality rate is the ratio of deceased children under 1 year of age and live births in the respective year. The mortality rate is expressed per 1000 live births.

Infant mortality rate = (number of deceased children under 1 year of age / number of live births) * 1000

Additional info:



Download all database data in Excel format:

[Data](#)



DevInfo profiles:

devinfo.stat.gov.rs/SerbiaProfileLauncher/?lang=en



DevInfo online database:

devinfo.stat.gov.rs/vitalna



For additional information or questions please contact:

devinfo@stat.gov.rs