

## Natural changes of population 1961 – 2020

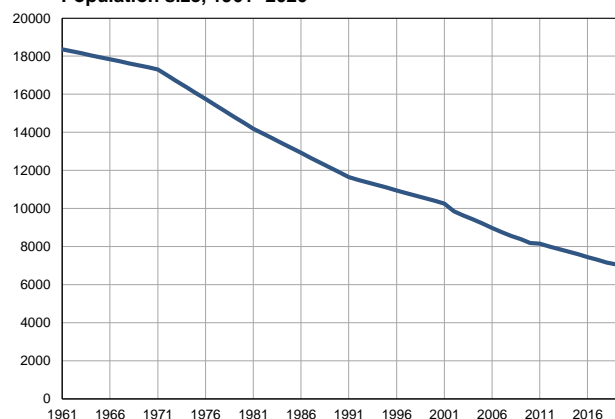
Profile  
July 2021

### Bosilegrad

	1961	2020
Population size	18368	6924
Livebirths, Number	347	40
Deaths, Number	158	150
Natural increase, Number	189	-110
Infants deaths, Number	32	0
Livebirths, per 1,000 population	19	6
Deaths, per 1,000 population	9	22
Natural increase, per 1,000 population	10	-16
Infants deaths, per 1,000 livebirths	92	0

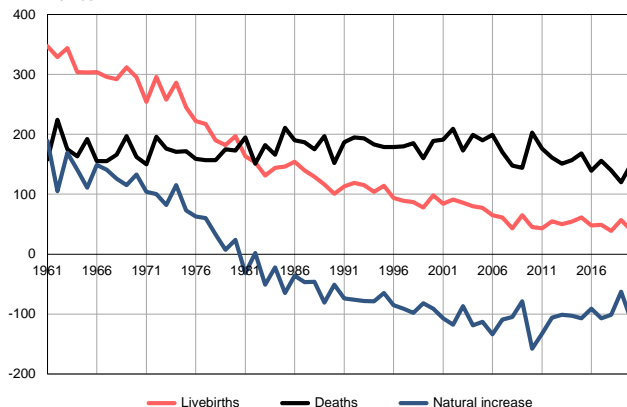
Source: Vital Statistics, SORS

Population size, 1961–2020



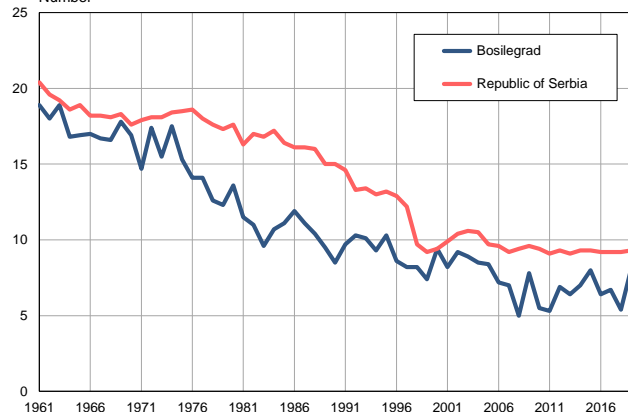
Source: Vital Statistics, SORS

Livebirths, deaths and natural increase, 1961–2020



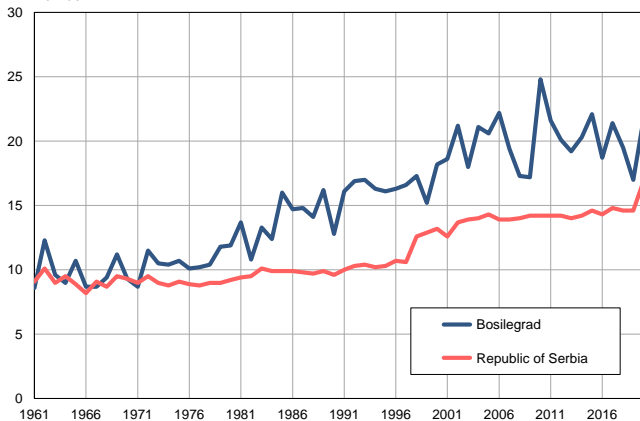
Source: Vital Statistics, SORS

Livebirths per 1,000 population, 1961–2020



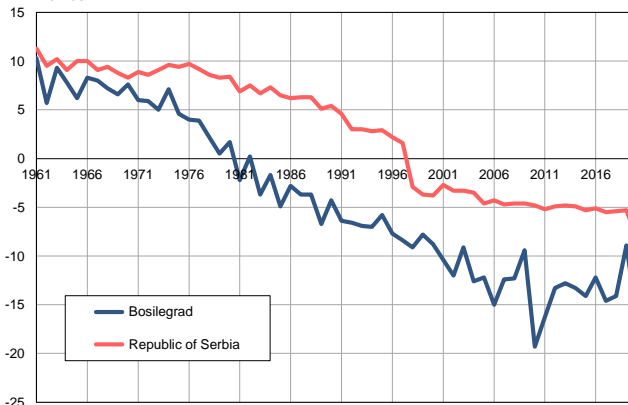
Source: Vital Statistics, SORS

Deaths per 1,000 population, 1961–2020



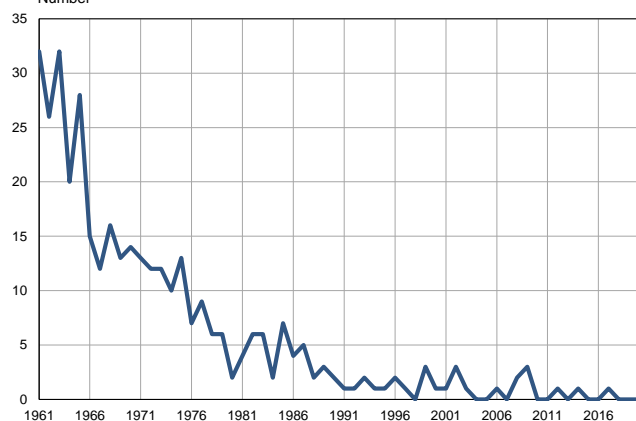
Source: Vital Statistics, SORS

Natural increase per 1,000 population, 1961–2020



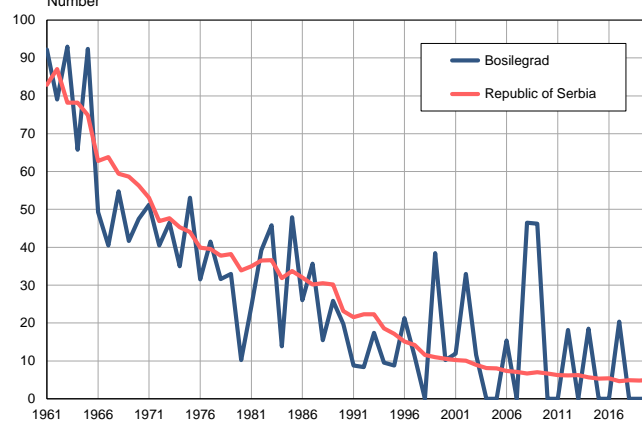
Source: Vital Statistics, SORS

**Infants deaths, 1961–2020**  
Number



Source: Vital Statistics, SORS

**Infants deaths per 1,000 livebirths, 1961–2020**  
Number



Source: Vital Statistics, SORS

**Table. Natural changes of population, Bosilegrad**

Year	Number of population	Livebirths	Deaths	Natural increase	Infants deaths	per 1000 population			Infant deaths per 1000 livebirths
						Livebirths	Deaths	Natural increase	
1961	18368	347	158	189	32	18.9	8.6	10.3	92.2
1962	18262	329	224	105	26	18.0	12.3	5.7	79.0
1963	18156	344	175	169	32	18.9	9.6	9.3	93.0
1964	18049	304	163	141	20	16.8	9.0	7.8	65.8
1965	17943	303	192	111	28	16.9	10.7	6.2	92.4
1966	17837	304	155	149	15	17.0	8.7	8.3	49.3
1967	17731	296	155	141	12	16.7	8.7	8.0	40.5
1968	17625	292	166	126	16	16.6	9.4	7.2	54.8
1969	17518	312	197	115	13	17.8	11.2	6.6	41.7
1970	17412	295	162	133	14	16.9	9.3	7.6	47.5
1971	17306	254	150	104	13	14.7	8.7	6.0	51.2
1972	16994	296	196	100	12	17.4	11.5	5.9	40.5
1973	16684	258	176	82	12	15.5	10.5	5.0	46.5
1974	16372	286	171	115	10	17.5	10.4	7.1	35.0
1975	16061	245	172	73	13	15.3	10.7	4.6	53.1
1976	15750	222	159	63	7	14.1	10.1	4.0	31.5
1977	15440	217	157	60	9	14.1	10.2	3.9	41.5
1978	15129	190	157	33	6	12.6	10.4	2.2	31.6
1979	14817	182	175	7	6	12.3	11.8	0.5	33.0
1980	14507	197	173	24	2	13.6	11.9	1.7	10.2
1981	14196	163	195	-32	4	11.5	13.7	-2.2	24.5
1982	13941	153	151	2	6	11.0	10.8	0.2	39.2
1983	13685	131	182	-51	6	9.6	13.3	-3.7	45.8
1984	13430	144	166	-22	2	10.7	12.4	-1.7	13.9
1985	13175	146	211	-65	7	11.1	16.0	-4.9	47.9
1986	12920	154	190	-36	4	11.9	14.7	-2.8	26.0
1987	12665	140	187	-47	5	11.1	14.8	-3.7	35.7
1988	12410	129	175	-46	2	10.4	14.1	-3.7	15.5
1989	12154	116	197	-81	3	9.5	16.2	-6.7	25.9
1990	11899	101	152	-51	2	8.5	12.8	-4.3	19.8
1991	11644	113	187	-74	1	9.7	16.1	-6.4	8.8
1992	11505	119	195	-76	1	10.3	16.9	-6.6	8.4
1993	11367	115	193	-78	2	10.1	17.0	-6.9	17.4
1994	11228	104	183	-79	1	9.3	16.3	-7.0	9.6
1995	11090	114	179	-65	1	10.3	16.1	-5.8	8.8
1996	10951	94	179	-85	2	8.6	16.3	-7.7	21.3
1997	10813	89	180	-91	1	8.2	16.6	-8.4	11.2
1998	10674	87	185	-98	0	8.2	17.3	-9.1	0.0
1999	10536	78	160	-82	3	7.4	15.2	-7.8	38.5
2000	10397	98	189	-91	1	9.4	18.2	-8.8	10.2
2001	10259	84	191	-107	1	8.2	18.6	-10.4	11.9
2002	9843	91	209	-118	3	9.2	21.2	-12.0	33.0
2003	9627	86	173	-87	1	8.9	18.0	-9.1	11.6
2004	9437	80	199	-119	0	8.5	21.1	-12.6	0.0
2005	9218	77	190	-113	0	8.4	20.6	-12.2	0.0

**Table. Natural changes of population, Bosilegrad**

Year	Number of population	Livebirths	Deaths	Natural increase	Infants deaths	per 1000 population			Infant deaths per 1000 livebirths
						Livebirths	Deaths	Natural increase	
2006	8973	65	199	-134	1	7.2	22.2	-15.0	15.4
2007	8758	61	170	-109	0	7.0	19.4	-12.4	0.0
2008	8555	43	148	-105	2	5.0	17.3	-12.3	46.5
2009	8381	65	144	-79	3	7.8	17.2	-9.4	46.2
2010	8191	45	203	-158	0	5.5	24.8	-19.3	0.0
2011	8150	43	176	-133	0	5.3	21.6	-16.3	0.0
2012	7998	55	161	-106	1	6.9	20.1	-13.3	18.2
2013	7866	50	151	-101	0	6.4	19.2	-12.8	0.0
2014	7729	54	157	-103	1	7.0	20.3	-13.3	18.5
2015	7588	61	168	-107	0	8.0	22.1	-14.1	0.0
2016	7447	48	139	-91	0	6.4	18.7	-12.2	0.0
2017	7304	49	156	-107	1	6.7	21.4	-14.6	20.4
2018	7167	39	140	-101	0	5.4	19.5	-14.1	0.0
2019	7050	57	120	-63	0	8.1	17.0	-8.9	0.0
2020	6924	40	150	-110	0	5.8	21.7	-15.9	0.0

Source: Vital Statistics, SORS

## Definitions

### Population size

Number of population in the respective year. The data on the number of population in 1961, 1971, 1981 and 1991 are census data, while for the inter-census years the number of population was calculated as an average inter-census difference. From 2002 are given the population estimates that were calculated according to the census of population results and the annual statistics of natural mechanical population movements.

### Livebirths

Absolute number of live births in the course of a year. Live born child means a child giving vital signs after birth (breathing, i.e. heartbeat), even for the shortest time, regardless the mother's pregnancy duration.

### Deaths

Absolute number of deaths in the course of a year. Deceased is a person that whenever after having been born live, shows permanently stopped vital signs.

### Natural increase

Natural population increase is the number of live births minus the number of deaths.

### Infants deaths

Absolute number of infants deaths in the course of a year. Deceased infant is a child that after having been born live and before aged one year, shows permanently stopped vital signs.

### Livebirths, per 1 000 population

Livebirths rate is the ratio of the number of live births and the population size in the respective year. The number of live births is divided by the population size and then multiplied by 1000.

### Deaths, per 1 000 population

General mortality rate represents the ratio between the number of deaths and the population size in the respective year. The number of deaths is divided by population size and then multiplied by 1000.

### Natural increase, per 1 000 population

Natural population increase rate is the difference between the number of live births and the number of deaths, in relation to the population size in the respective year.

Natural population increase rate = (number of live births - number of deaths) / population size \* 1000

### Infants deaths, per 1 000 livebirths

Infant mortality rate is the ratio of deceased children under 1 year of age and live births in the respective year. The mortality rate is expressed per 1000 live births.

Infant mortality rate = (number of deceased children under 1 year of age / number of live births) \* 1000

## Additional info:



Download all database data in Excel format:

[Data](#)



DevInfo profiles:

[devinfo.stat.gov.rs/SerbiaProfileLauncher/?lang=en](http://devinfo.stat.gov.rs/SerbiaProfileLauncher/?lang=en)



DevInfo online database:

[devinfo.stat.gov.rs/vitalna](http://devinfo.stat.gov.rs/vitalna)



For additional information or questions please contact:

[devinfo@stat.gov.rs](mailto:devinfo@stat.gov.rs)