

Natural changes of population 1961 – 2022

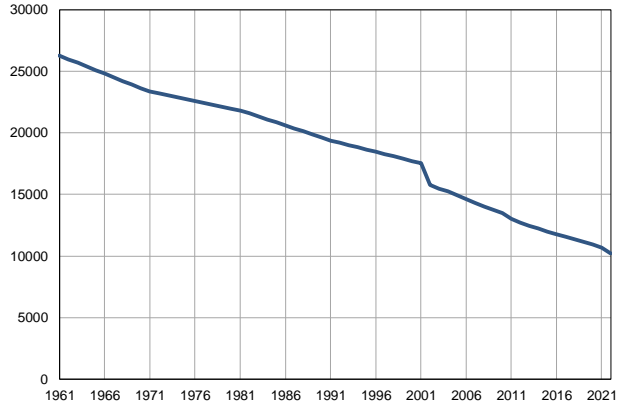
Profile
July 2023

Boljevac

	1961	2022
Population size	26277	10228
Livebirths, Number	353	65
Deaths, Number	275	218
Natural increase, Number	78	-153
Infants deaths, Number	18	0
Livebirths, per 1,000 population	13	6
Deaths, per 1,000 population	11	21
Natural increase, per 1,000 population	3	-15
Infants deaths, per 1,000 livebirths	51	0

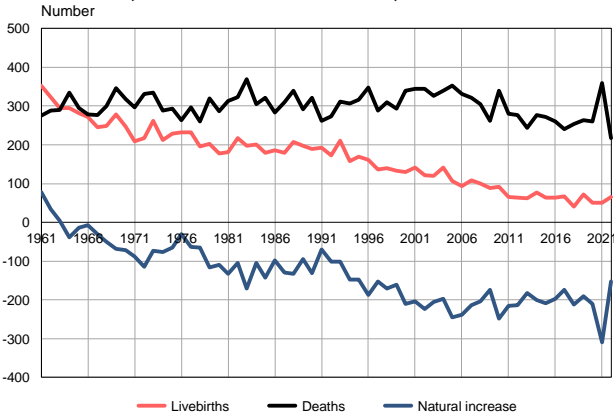
Source: Vital Statistics, SORS

Population size, 1961–2022



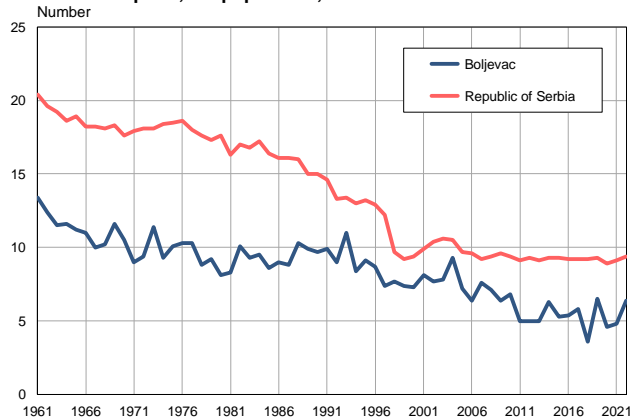
Source: Vital Statistics, SORS

Livebirths, deaths and natural increase, 1961–2022



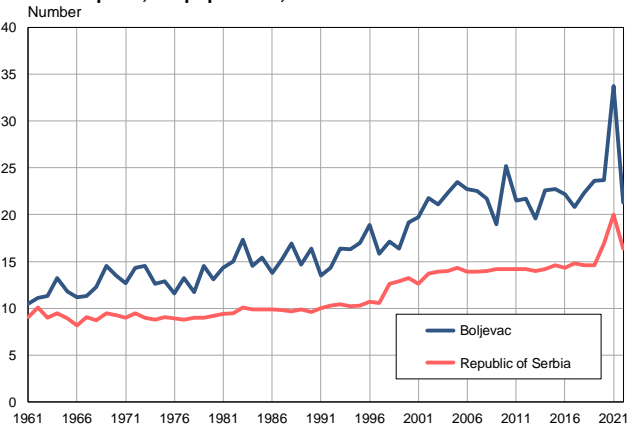
Source: Vital Statistics, SORS

Livebirths per 1,000 population, 1961–2022



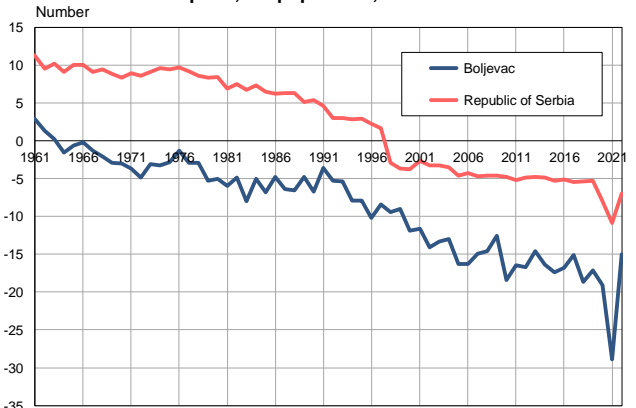
Source: Vital Statistics, SORS

Deaths per 1,000 population, 1961–2022



Source: Vital Statistics, SORS

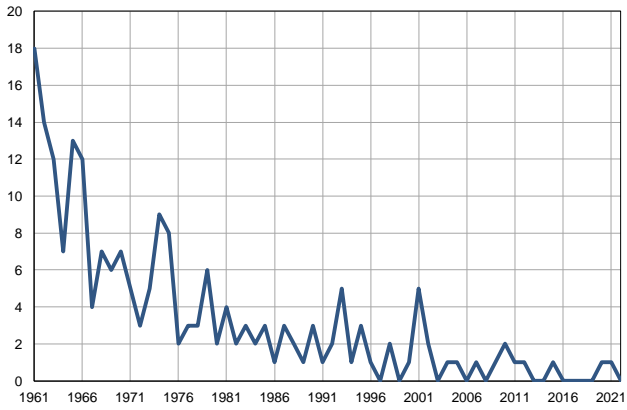
Natural increase per 1,000 population, 1961–2022



Source: Vital Statistics, SORS

Infants deaths, 1961–2022

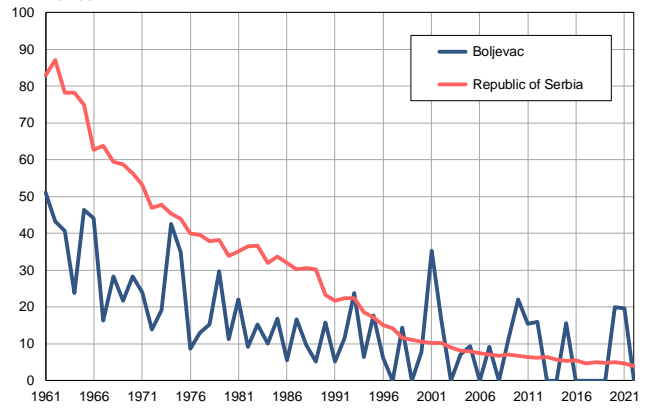
Number



Source: Vital Statistics, SORS

Infants deaths per 1,000 livebirths, 1961–2022

Number



Source: Vital Statistics, SORS

Table. Natural changes of population, Boljevac

Year	Number of population	Livebirths	Deaths	Natural increase	Infants deaths	per 1000 population			Infant deaths per 1000 livebirths
						Livebirths	Deaths	Natural increase	
1961	26277	353	275	78	18	13.4	10.5	2.9	51.0
1962	25983	323	289	34	14	12.4	11.1	1.3	43.3
1963	25689	295	290	5	12	11.5	11.3	0.2	40.7
1964	25394	295	334	-39	7	11.6	13.2	-1.6	23.7
1965	25100	281	295	-14	13	11.2	11.8	-0.6	46.3
1966	24806	272	279	-7	12	11.0	11.2	-0.2	44.1
1967	24512	245	276	-31	4	10.0	11.3	-1.3	16.3
1968	24218	248	299	-51	7	10.2	12.3	-2.1	28.2
1969	23923	278	346	-68	6	11.6	14.5	-2.9	21.6
1970	23629	247	318	-71	7	10.5	13.5	-3.0	28.3
1971	23335	209	297	-88	5	9.0	12.7	-3.7	23.9
1972	23184	217	331	-114	3	9.4	14.3	-4.9	13.8
1973	23032	262	335	-73	5	11.4	14.5	-3.1	19.1
1974	22880	212	289	-77	9	9.3	12.6	-3.3	42.5
1975	22728	229	294	-65	8	10.1	12.9	-2.8	34.9
1976	22577	232	263	-31	2	10.3	11.6	-1.3	8.6
1977	22425	232	296	-64	3	10.3	13.2	-2.9	12.9
1978	22273	196	261	-65	3	8.8	11.7	-2.9	15.3
1979	22121	203	320	-117	6	9.2	14.5	-5.3	29.6
1980	21970	178	287	-109	2	8.1	13.1	-5.0	11.2
1981	21818	181	313	-132	4	8.3	14.3	-6.0	22.1
1982	21575	218	323	-105	2	10.1	15.0	-4.9	9.2
1983	21331	198	369	-171	3	9.3	17.3	-8.0	15.2
1984	21088	201	305	-104	2	9.5	14.5	-5.0	10.0
1985	20844	179	322	-143	3	8.6	15.4	-6.8	16.8
1986	20601	186	284	-98	1	9.0	13.8	-4.8	5.4
1987	20358	180	310	-130	3	8.8	15.2	-6.4	16.7
1988	20114	207	340	-133	2	10.3	16.9	-6.6	9.7
1989	19870	197	292	-95	1	9.9	14.7	-4.8	5.1
1990	19627	190	321	-131	3	9.7	16.4	-6.7	15.8
1991	19384	192	262	-70	1	9.9	13.5	-3.6	5.2
1992	19199	172	274	-102	2	9.0	14.3	-5.3	11.6
1993	19014	210	312	-102	5	11.0	16.4	-5.4	23.8
1994	18828	158	306	-148	1	8.4	16.3	-7.9	6.3
1995	18644	170	317	-147	3	9.1	17.0	-7.9	17.6
1996	18458	161	348	-187	1	8.7	18.9	-10.2	6.2
1997	18273	136	289	-153	0	7.4	15.8	-8.4	0.0
1998	18088	139	310	-171	2	7.7	17.1	-9.4	14.4
1999	17903	133	294	-161	0	7.4	16.4	-9.0	0.0
2000	17717	130	340	-210	1	7.3	19.2	-11.9	7.7
2001	17532	142	345	-203	5	8.1	19.7	-11.6	35.2
2002	15771	121	344	-223	2	7.7	21.8	-14.1	16.5
2003	15482	120	326	-206	0	7.8	21.1	-13.3	0.0
2004	15231	142	340	-198	1	9.3	22.3	-13.0	7.0
2005	14947	107	352	-245	1	7.2	23.5	-16.3	9.3

Table. Natural changes of population, Boljevac

Year	Number of population	Livebirths	Deaths	Natural increase	Infants deaths	per 1000 population			Infant deaths per 1000 livebirths
						Livebirths	Deaths	Natural increase	
2006	14610	93	332	-239	0	6.4	22.7	-16.3	0.0
2007	14291	109	322	-213	1	7.6	22.5	-14.9	9.2
2008	14022	100	304	-204	0	7.1	21.7	-14.6	0.0
2009	13767	88	262	-174	1	6.4	19.0	-12.6	11.4
2010	13474	91	339	-248	2	6.8	25.2	-18.4	22.0
2011	13000	65	280	-215	1	5.0	21.5	-16.5	15.4
2012	12720	63	276	-213	1	5.0	21.7	-16.7	15.9
2013	12468	62	244	-182	0	5.0	19.6	-14.6	0.0
2014	12231	77	277	-200	0	6.3	22.6	-16.4	0.0
2015	11985	64	272	-208	1	5.3	22.7	-17.4	15.6
2016	11761	63	261	-198	0	5.4	22.2	-16.8	0.0
2017	11560	67	241	-174	0	5.8	20.8	-15.1	0.0
2018	11358	41	253	-212	0	3.6	22.3	-18.7	0.0
2019	11148	72	263	-191	0	6.5	23.6	-17.1	0.0
2020	10950	50	260	-210	1	4.6	23.7	-19.1	20.0
2021	10692	51	360	-309	1	4.8	33.7	-28.9	19.6
2022	10228	65	218	-153	0	6.4	21.3	-15.0	0.0

Source: Vital Statistics, SORS

Definitions

Population size

Number of population in the respective year. The data on the number of population in 1961, 1971, 1981 and 1991 are census data, while for the inter-census years the number of population was calculated as an average inter-census difference. From 2002 are given the population estimates that were calculated according to the census of population results and the annual statistics of natural mechanical population movements.

Livebirths

Absolute number of live births in the course of a year. Live born child means a child giving vital signs after birth (breathing, i.e. heartbeat), even for the shortest time, regardless the mother's pregnancy duration.

Deaths

Absolute number of deaths in the course of a year. Deceased is a person that whenever after having been born live, shows permanently stopped vital signs.

Natural increase

Natural population increase is the number of live births minus the number of deaths.

Infants deaths

Absolute number of infants deaths in the course of a year. Deceased infant is a child that after having been born live and before aged one year, shows permanently stopped vital signs.

Livebirths, per 1 000 population

Livebirths rate is the ratio of the number of live births and the population size in the respective year. The number of live births is divided by the population size and then multiplied by 1000.

Deaths, per 1 000 population

General mortality rate represents the ratio between the number of deaths and the population size in the respective year. The number of deaths is divided by population size and then multiplied by 1000.

Natural increase, per 1 000 population

Natural population increase rate is the difference between the number of live births and the number of deaths, in relation to the population size in the respective year.

Natural population increase rate = (number of live births - number of deaths) / population size * 1000

Infants deaths, per 1 000 livebirths

Infant mortality rate is the ratio of deceased children under 1 year of age and live births in the respective year. The mortality rate is expressed per 1000 live births.

Infant mortality rate = (number of deceased children under 1 year of age / number of live births) * 1000

Additional info:



Download all database data in Excel format:

[Data](#)



DevInfo profiles:

devinfo.stat.gov.rs/SerbiaProfileLauncher/?lang=en



DevInfo online database:

devinfo.stat.gov.rs/vitalna



For additional information or questions please contact:

devinfo@stat.gov.rs