

Natural changes of population 1961 – 2022

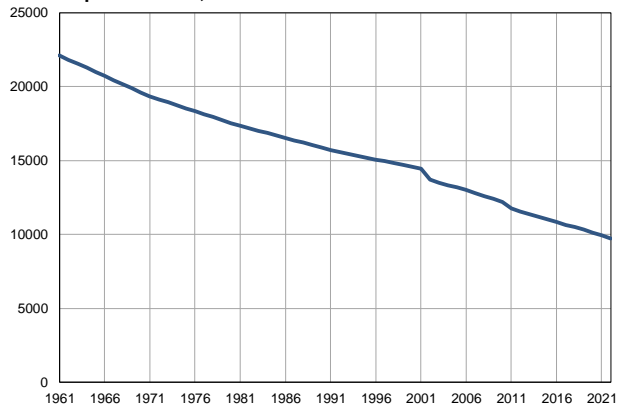
Profile
July 2023

Blace

	1961	2022
Population size	22099	9731
Livebirths, Number	329	69
Deaths, Number	194	218
Natural increase, Number	135	-149
Infants deaths, Number	17	0
Livebirths, per 1,000 population	15	7
Deaths, per 1,000 population	9	22
Natural increase, per 1,000 population	6	-15
Infants deaths, per 1,000 livebirths	52	0

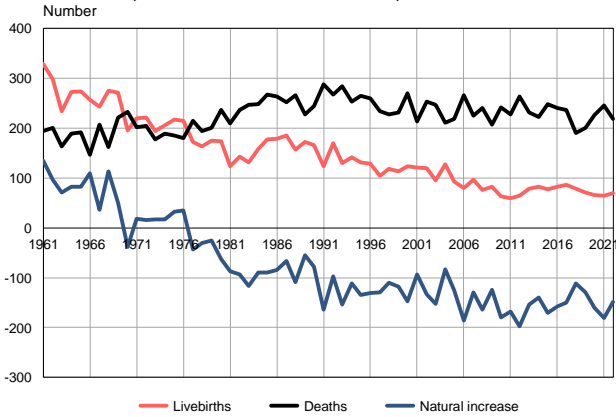
Source: Vital Statistics, SORS

Population size, 1961–2022



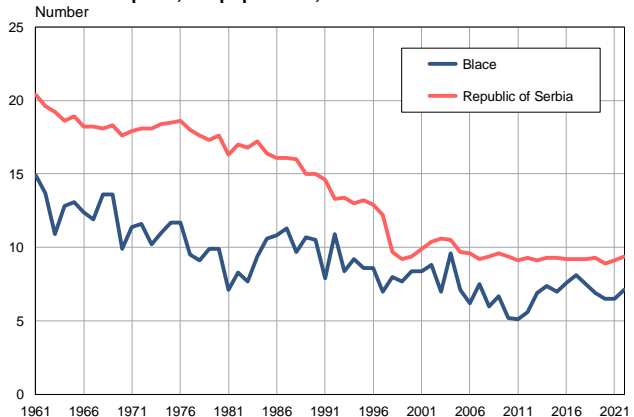
Source: Vital Statistics, SORS

Livebirths, deaths and natural increase, 1961–2022



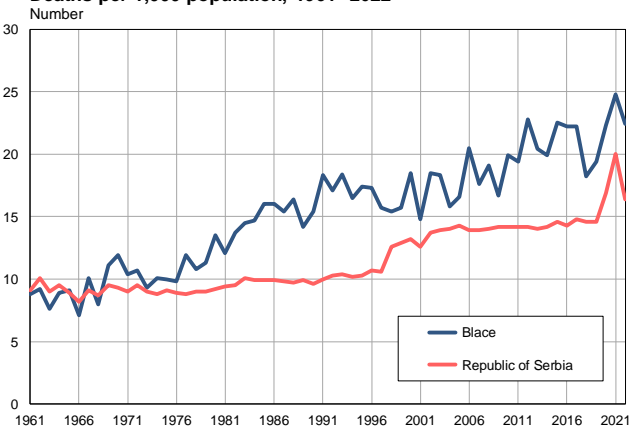
Source: Vital Statistics, SORS

Livebirths per 1,000 population, 1961–2022



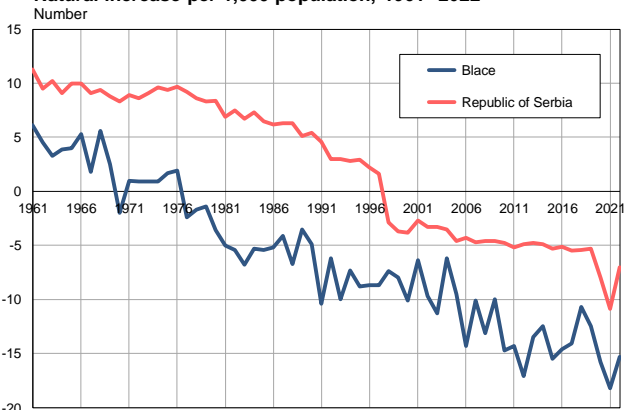
Source: Vital Statistics, SORS

Deaths per 1,000 population, 1961–2022



Source: Vital Statistics, SORS

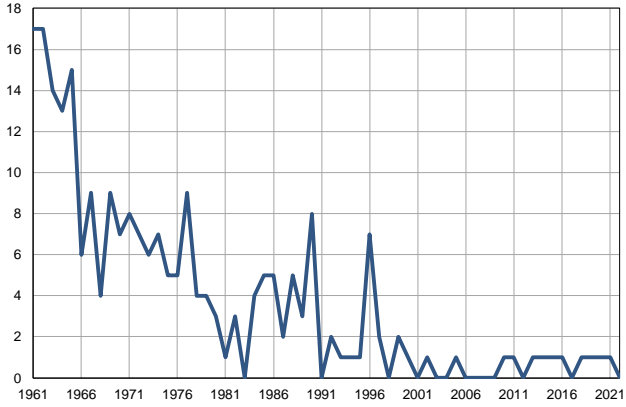
Natural increase per 1,000 population, 1961–2022



Source: Vital Statistics, SORS

Infants deaths, 1961–2022

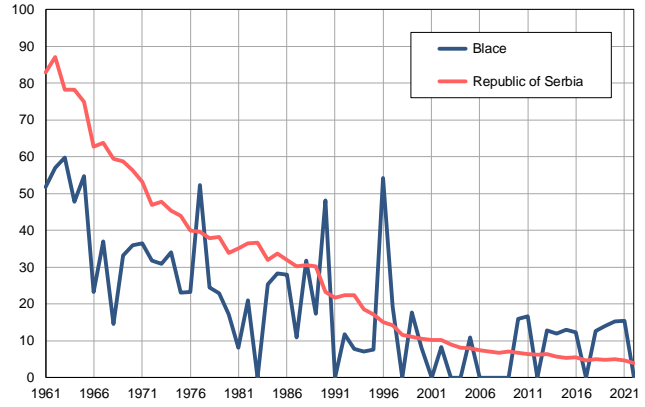
Number



Source: Vital Statistics, SORS

Infants deaths per 1,000 livebirths, 1961–2022

Number



Source: Vital Statistics, SORS

Table. Natural changes of population, Blace

Year	Number of population	Livebirths	Deaths	Natural increase	Infants deaths	per 1000 population			Infant deaths per 1000 livebirths
						Livebirths	Deaths	Natural increase	
1961	22099	329	194	135	17	14.9	8.8	6.1	51.7
1962	21822	298	201	97	17	13.7	9.2	4.5	57.0
1963	21545	234	163	71	14	10.9	7.6	3.3	59.8
1964	21269	272	189	83	13	12.8	8.9	3.9	47.8
1965	20992	274	192	82	15	13.1	9.1	4.0	54.7
1966	20715	257	147	110	6	12.4	7.1	5.3	23.3
1967	20438	243	207	36	9	11.9	10.1	1.8	37.0
1968	20162	275	162	113	4	13.6	8.0	5.6	14.5
1969	19885	271	221	50	9	13.6	11.1	2.5	33.2
1970	19608	195	233	-38	7	9.9	11.9	-2.0	35.9
1971	19331	220	202	18	8	11.4	10.4	1.0	36.4
1972	19132	221	205	16	7	11.6	10.7	0.9	31.7
1973	18932	194	177	17	6	10.2	9.3	0.9	30.9
1974	18733	206	189	17	7	11.0	10.1	0.9	34.0
1975	18534	217	185	32	5	11.7	10.0	1.7	23.0
1976	18335	215	180	35	5	11.7	9.8	1.9	23.3
1977	18135	172	215	-43	9	9.5	11.9	-2.4	52.3
1978	17936	164	194	-30	4	9.1	10.8	-1.7	24.4
1979	17737	175	201	-26	4	9.9	11.3	-1.4	22.9
1980	17537	174	236	-62	3	9.9	13.5	-3.6	17.2
1981	17338	123	210	-87	1	7.1	12.1	-5.0	8.1
1982	17175	143	236	-93	3	8.3	13.7	-5.4	21.0
1983	17012	131	247	-116	0	7.7	14.5	-6.8	0.0
1984	16849	158	248	-90	4	9.4	14.7	-5.3	25.3
1985	16686	177	267	-90	5	10.6	16.0	-5.4	28.2
1986	16523	179	264	-85	5	10.8	16.0	-5.2	27.9
1987	16361	185	252	-67	2	11.3	15.4	-4.1	10.8
1988	16198	157	266	-109	5	9.7	16.4	-6.7	31.8
1989	16035	172	227	-55	3	10.7	14.2	-3.5	17.4
1990	15872	166	244	-78	8	10.5	15.4	-4.9	48.2
1991	15709	124	288	-164	0	7.9	18.3	-10.4	0.0
1992	15581	170	267	-97	2	10.9	17.1	-6.2	11.8
1993	15453	130	284	-154	1	8.4	18.4	-10.0	7.7
1994	15326	141	253	-112	1	9.2	16.5	-7.3	7.1
1995	15198	131	265	-134	1	8.6	17.4	-8.8	7.6
1996	15070	129	260	-131	7	8.6	17.3	-8.7	54.3
1997	14942	104	234	-130	2	7.0	15.7	-8.7	19.2
1998	14814	118	228	-110	0	8.0	15.4	-7.4	0.0
1999	14686	113	231	-118	2	7.7	15.7	-8.0	17.7
2000	14559	123	270	-147	1	8.4	18.5	-10.1	8.1
2001	14431	121	214	-93	0	8.4	14.8	-6.4	0.0
2002	13702	120	253	-133	1	8.8	18.5	-9.7	8.3
2003	13503	95	247	-152	0	7.0	18.3	-11.3	0.0
2004	13336	128	211	-83	0	9.6	15.8	-6.2	0.0
2005	13185	93	219	-126	1	7.1	16.6	-9.5	10.8

Table. Natural changes of population, Blace

Year	Number of population	Livebirths	Deaths	Natural increase	Infants deaths	per 1000 population			Infant deaths per 1000 livebirths
						Livebirths	Deaths	Natural increase	
2006	12995	80	266	-186	0	6.2	20.5	-14.3	0.0
2007	12780	96	225	-129	0	7.5	17.6	-10.1	0.0
2008	12564	76	240	-164	0	6.0	19.1	-13.1	0.0
2009	12386	83	207	-124	0	6.7	16.7	-10.0	0.0
2010	12174	63	242	-179	1	5.2	19.9	-14.7	15.9
2011	11761	60	228	-168	1	5.1	19.4	-14.3	16.7
2012	11557	65	263	-198	0	5.6	22.8	-17.1	0.0
2013	11370	78	232	-154	1	6.9	20.4	-13.5	12.8
2014	11212	83	223	-140	1	7.4	19.9	-12.5	12.0
2015	11035	77	248	-171	1	7.0	22.5	-15.5	13.0
2016	10832	82	240	-158	1	7.6	22.2	-14.6	12.2
2017	10651	86	236	-150	0	8.1	22.2	-14.1	0.0
2018	10509	79	191	-112	1	7.5	18.2	-10.7	12.7
2019	10339	71	201	-130	1	6.9	19.4	-12.5	14.1
2020	10132	66	226	-160	1	6.5	22.3	-15.8	15.2
2021	9925	65	246	-181	1	6.5	24.8	-18.2	15.4
2022	9731	69	218	-149	0	7.1	22.4	-15.3	0.0

Source: Vital Statistics, SORS

Definitions

Population size

Number of population in the respective year. The data on the number of population in 1961, 1971, 1981 and 1991 are census data, while for the inter-census years the number of population was calculated as an average inter-census difference. From 2002 are given the population estimates that were calculated according to the census of population results and the annual statistics of natural mechanical population movements.

Livebirths

Absolute number of live births in the course of a year. Live born child means a child giving vital signs after birth (breathing, i.e. heartbeat), even for the shortest time, regardless the mother's pregnancy duration.

Deaths

Absolute number of deaths in the course of a year. Deceased is a person that whenever after having been born live, shows permanently stopped vital signs.

Natural increase

Natural population increase is the number of live births minus the number of deaths.

Infants deaths

Absolute number of infants deaths in the course of a year. Deceased infant is a child that after having been born live and before aged one year, shows permanently stopped vital signs.

Livebirths, per 1 000 population

Livebirths rate is the ratio of the number of live births and the population size in the respective year. The number of live births is divided by the population size and then multiplied by 1000.

Deaths, per 1 000 population

General mortality rate represents the ratio between the number of deaths and the population size in the respective year. The number of deaths is divided by population size and then multiplied by 1000.

Natural increase, per 1 000 population

Natural population increase rate is the difference between the number of live births and the number of deaths, in relation to the population size in the respective year.

Natural population increase rate = (number of live births - number of deaths) / population size * 1000

Infants deaths, per 1 000 livebirths

Infant mortality rate is the ratio of deceased children under 1 year of age and live births in the respective year. The mortality rate is expressed per 1000 live births.

Infant mortality rate = (number of deceased children under 1 year of age / number of live births) * 1000

Additional info:



Download all database data in Excel format:

[Data](#)



DevInfo profiles:

devinfo.stat.gov.rs/SerbiaProfileLauncher/?lang=en



DevInfo online database:

devinfo.stat.gov.rs/vitalna



For additional information or questions please contact:

devinfo@stat.gov.rs