

Natural changes of population 1961 – 2022

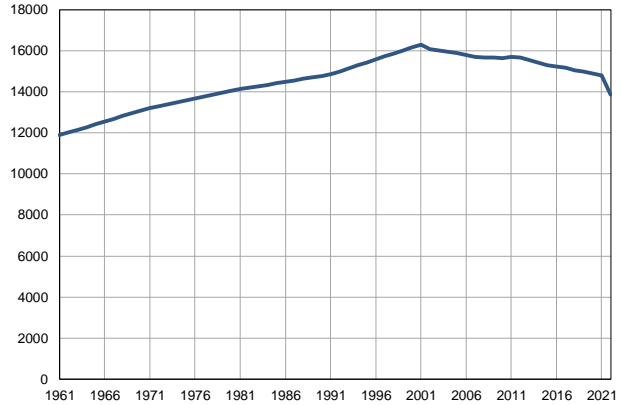
Profile
July 2023

Beočin

	1961	2022
Population size	11881	13872
Livebirths, Number	255	133
Deaths, Number	115	191
Natural increase, Number	140	-58
Infants deaths, Number	13	1
Livebirths, per 1,000 population	22	10
Deaths, per 1,000 population	10	14
Natural increase, per 1,000 population	12	-4
Infants deaths, per 1,000 livebirths	51	8

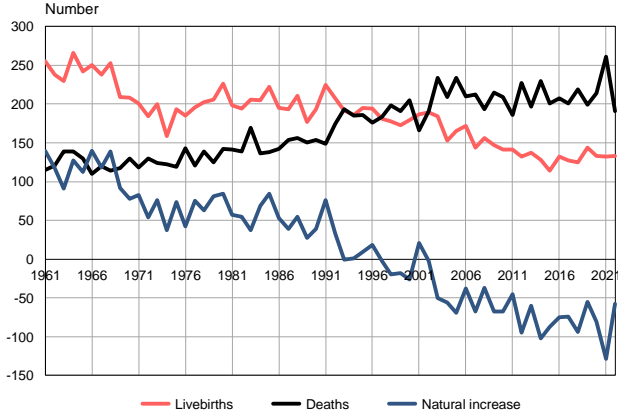
Source: Vital Statistics, SORS

Population size, 1961–2022



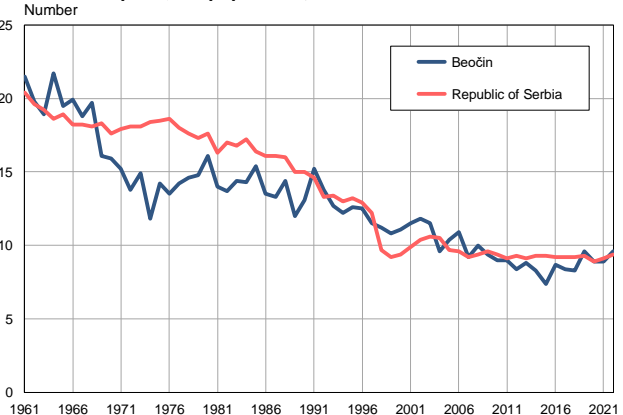
Source: Vital Statistics, SORS

Livebirths, deaths and natural increase, 1961–2022



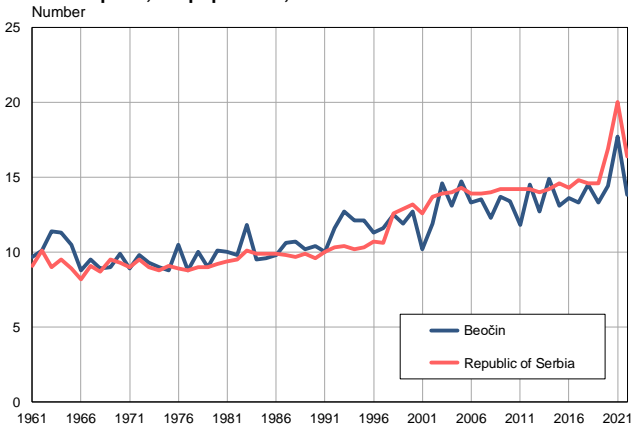
Source: Vital Statistics, SORS

Livebirths per 1,000 population, 1961–2022



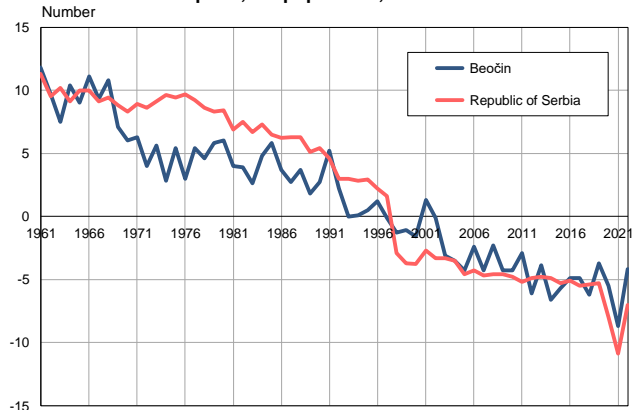
Source: Vital Statistics, SORS

Deaths per 1,000 population, 1961–2022



Source: Vital Statistics, SORS

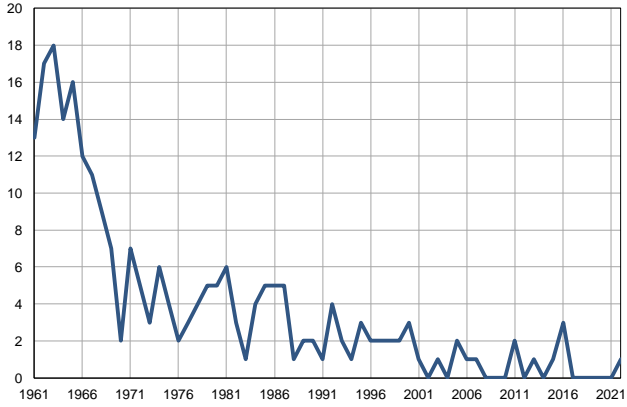
Natural increase per 1,000 population, 1961–2022



Source: Vital Statistics, SORS

Infants deaths, 1961–2022

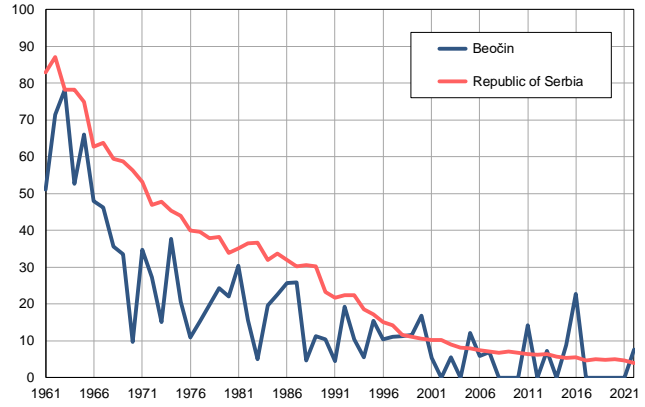
Number



Source: Vital Statistics, SORS

Infants deaths per 1,000 livebirths, 1961–2022

Number



Source: Vital Statistics, SORS

Table. Natural changes of population, BEOČIN

Year	Number of population	Livebirths	Deaths	Natural increase	Infants deaths	per 1000 population			Infant deaths per 1000 livebirths
						Livebirths	Deaths	Natural increase	
1961	11881	255	115	140	13	21.5	9.7	11.8	51.0
1962	12015	238	121	117	17	19.8	10.1	9.7	71.4
1963	12148	230	139	91	18	18.9	11.4	7.5	78.3
1964	12282	266	139	127	14	21.7	11.3	10.4	52.6
1965	12415	242	130	112	16	19.5	10.5	9.0	66.1
1966	12549	250	110	140	12	19.9	8.8	11.1	48.0
1967	12682	238	120	118	11	18.8	9.5	9.3	46.2
1968	12816	253	114	139	9	19.7	8.9	10.8	35.6
1969	12949	209	117	92	7	16.1	9.0	7.1	33.5
1970	13083	208	130	78	2	15.9	9.9	6.0	9.6
1971	13216	201	118	83	7	15.2	8.9	6.3	34.8
1972	13307	184	130	54	5	13.8	9.8	4.0	27.2
1973	13398	200	124	76	3	14.9	9.3	5.6	15.0
1974	13489	159	122	37	6	11.8	9.0	2.8	37.7
1975	13580	193	119	74	4	14.2	8.8	5.4	20.7
1976	13670	185	143	42	2	13.5	10.5	3.0	10.8
1977	13762	196	121	75	3	14.2	8.8	5.4	15.3
1978	13853	202	139	63	4	14.6	10.0	4.6	19.8
1979	13944	206	125	81	5	14.8	9.0	5.8	24.3
1980	14035	226	142	84	5	16.1	10.1	6.0	22.1
1981	14126	198	141	57	6	14.0	10.0	4.0	30.3
1982	14198	194	139	55	3	13.7	9.8	3.9	15.5
1983	14270	206	169	37	1	14.4	11.8	2.6	4.9
1984	14343	205	136	69	4	14.3	9.5	4.8	19.5
1985	14415	222	138	84	5	15.4	9.6	5.8	22.5
1986	14486	195	142	53	5	13.5	9.8	3.7	25.6
1987	14559	193	154	39	5	13.3	10.6	2.7	25.9
1988	14631	211	156	55	1	14.4	10.7	3.7	4.7
1989	14704	177	150	27	2	12.0	10.2	1.8	11.3
1990	14776	193	154	39	2	13.1	10.4	2.7	10.4
1991	14848	225	149	76	1	15.2	10.0	5.2	4.4
1992	14993	207	174	33	4	13.8	11.6	2.2	19.3
1993	15139	192	193	-1	2	12.7	12.7	0.0	10.4
1994	15284	186	185	1	1	12.2	12.1	0.1	5.4
1995	15429	195	186	9	3	12.6	12.1	0.5	15.4
1996	15574	194	176	18	2	12.5	11.3	1.2	10.3
1997	15720	181	183	-2	2	11.5	11.6	-0.1	11.0
1998	15865	178	198	-20	2	11.2	12.5	-1.3	11.2
1999	16010	173	191	-18	2	10.8	11.9	-1.1	11.6
2000	16155	179	205	-26	3	11.1	12.7	-1.6	16.8
2001	16301	187	166	21	1	11.5	10.2	1.3	5.3
2002	16085	189	191	-2	0	11.8	11.9	-0.1	0.0
2003	16015	184	234	-50	1	11.5	14.6	-3.1	5.4
2004	15938	153	209	-56	0	9.6	13.1	-3.5	0.0
2005	15880	165	234	-69	2	10.4	14.7	-4.3	12.1

Table. Natural changes of population, Beočin

Year	Number of population	Livebirths	Deaths	Natural increase	Infants deaths	per 1000 population			Infant deaths per 1000 livebirths
						Livebirths	Deaths	Natural increase	
2006	15799	172	210	-38	1	10.9	13.3	-2.4	5.8
2007	15704	144	212	-68	1	9.2	13.5	-4.3	6.9
2008	15672	156	193	-37	0	10.0	12.3	-2.3	0.0
2009	15682	147	215	-68	0	9.4	13.7	-4.3	0.0
2010	15633	141	209	-68	0	9.0	13.4	-4.3	0.0
2011	15716	141	186	-45	2	9.0	11.8	-2.9	14.2
2012	15656	132	227	-95	0	8.4	14.5	-6.1	0.0
2013	15551	137	197	-60	1	8.8	12.7	-3.9	7.3
2014	15428	128	230	-102	0	8.3	14.9	-6.6	0.0
2015	15304	114	201	-87	1	7.4	13.1	-5.7	8.8
2016	15229	132	207	-75	3	8.7	13.6	-4.9	22.7
2017	15155	127	201	-74	0	8.4	13.3	-4.9	0.0
2018	15054	125	219	-94	0	8.3	14.5	-6.2	0.0
2019	14970	144	199	-55	0	9.6	13.3	-3.7	0.0
2020	14905	133	214	-81	0	8.9	14.4	-5.5	0.0
2021	14787	132	261	-129	0	8.9	17.7	-8.7	0.0
2022	13872	133	191	-58	1	9.6	13.8	-4.2	7.5

Source: Vital Statistics, SORS

Definitions

Population size

Number of population in the respective year. The data on the number of population in 1961, 1971, 1981 and 1991 are census data, while for the inter-census years the number of population was calculated as an average inter-census difference. From 2002 are given the population estimates that were calculated according to the census of population results and the annual statistics of natural mechanical population movements.

Livebirths

Absolute number of live births in the course of a year. Live born child means a child giving vital signs after birth (breathing, i.e. heartbeat), even for the shortest time, regardless the mother's pregnancy duration.

Deaths

Absolute number of deaths in the course of a year. Deceased is a person that whenever after having been born live, shows permanently stopped vital signs.

Natural increase

Natural population increase is the number of live births minus the number of deaths.

Infants deaths

Absolute number of infants deaths in the course of a year. Deceased infant is a child that after having been born live and before aged one year, shows permanently stopped vital signs.

Livebirths, per 1 000 population

Livebirths rate is the ratio of the number of live births and the population size in the respective year. The number of live births is divided by the population size and then multiplied by 1000.

Deaths, per 1 000 population

General mortality rate represents the ratio between the number of deaths and the population size in the respective year. The number of deaths is divided by population size and then multiplied by 1000.

Natural increase, per 1 000 population

Natural population increase rate is the difference between the number of live births and the number of deaths, in relation to the population size in the respective year.

Natural population increase rate = (number of live births - number of deaths) / population size * 1000

Infants deaths, per 1 000 livebirths

Infant mortality rate is the ratio of deceased children under 1 year of age and live births in the respective year. The mortality rate is expressed per 1000 live births.

Infant mortality rate = (number of deceased children under 1 year of age / number of live births) * 1000

Additional info:



Download all database data in Excel format:

[Data](#)



DevInfo profiles:

devinfo.stat.gov.rs/SerbiaProfileLauncher/?lang=en



DevInfo online database:

devinfo.stat.gov.rs/vitalna



For additional information or questions please contact:

devinfo@stat.gov.rs