

Natural changes of population 1961 – 2022

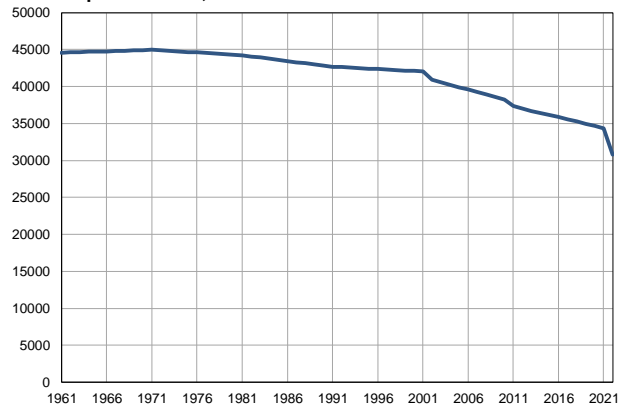
Profile
July 2023

Bečej

	1961	2022
Population size	44585	30784
Livebirths, Number	750	286
Deaths, Number	477	637
Natural increase, Number	273	-351
Infants deaths, Number	46	1
Livebirths, per 1,000 population	17	9
Deaths, per 1,000 population	11	21
Natural increase, per 1,000 population	6	-11
Infants deaths, per 1,000 livebirths	61	4

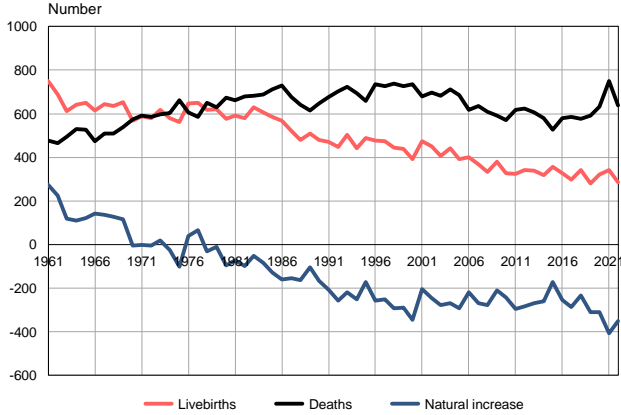
Source: Vital Statistics, SORS

Population size, 1961–2022



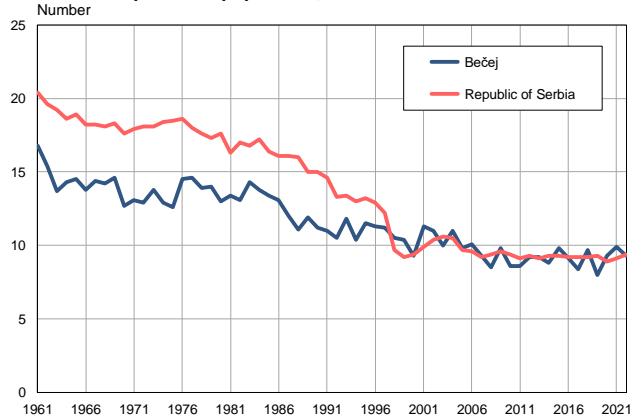
Source: Vital Statistics, SORS

Livebirths, deaths and natural increase, 1961–2022



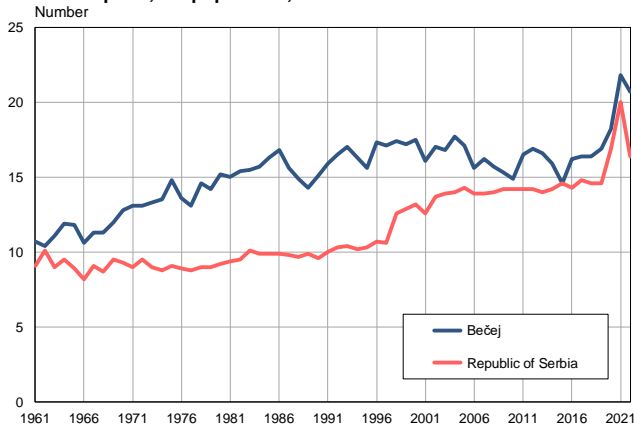
Source: Vital Statistics, SORS

Livebirths per 1,000 population, 1961–2022



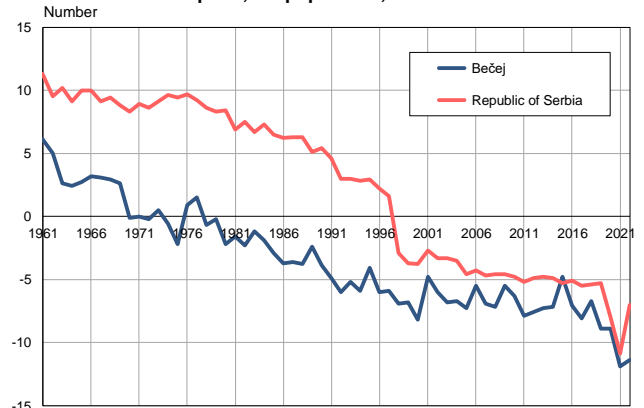
Source: Vital Statistics, SORS

Deaths per 1,000 population, 1961–2022



Source: Vital Statistics, SORS

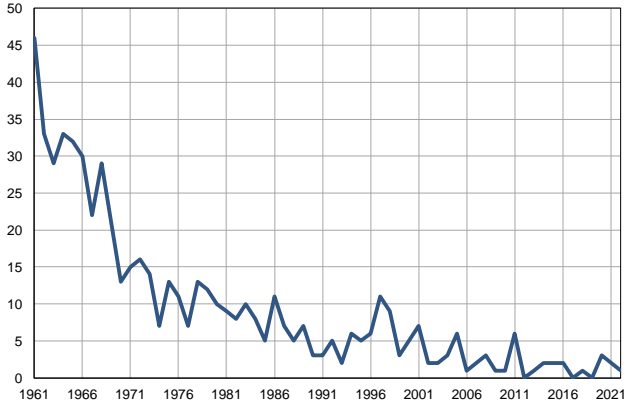
Natural increase per 1,000 population, 1961–2022



Source: Vital Statistics, SORS

Infants deaths, 1961–2022

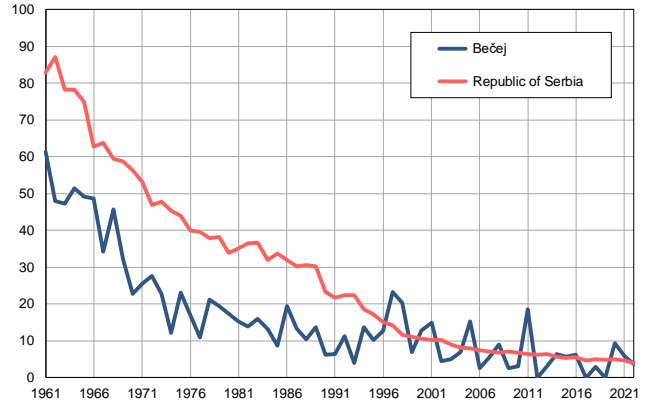
Number



Source: Vital Statistics, SORS

Infants deaths per 1,000 livebirths, 1961–2022

Number



Source: Vital Statistics, SORS

Table. Natural changes of population, Bečej

Year	Number of population	Livebirths	Deaths	Natural increase	Infants deaths	per 1000 population			Infant deaths per 1000 livebirths
						Livebirths	Deaths	Natural increase	
1961	44585	750	477	273	46	16.8	10.7	6.1	61.3
1962	44623	689	464	225	33	15.4	10.4	5.0	47.9
1963	44663	613	494	119	29	13.7	11.1	2.6	47.3
1964	44702	641	530	111	33	14.3	11.9	2.4	51.5
1965	44741	650	528	122	32	14.5	11.8	2.7	49.2
1966	44781	616	473	143	30	13.8	10.6	3.2	48.7
1967	44820	644	508	136	22	14.4	11.3	3.1	34.2
1968	44859	635	508	127	29	14.2	11.3	2.9	45.7
1969	44898	654	538	116	21	14.6	12.0	2.6	32.1
1970	44937	569	573	-4	13	12.7	12.8	-0.1	22.8
1971	44976	588	590	-2	15	13.1	13.1	0.0	25.5
1972	44903	580	586	-6	16	12.9	13.1	-0.2	27.6
1973	44829	617	598	19	14	13.8	13.3	0.5	22.7
1974	44756	579	604	-25	7	12.9	13.5	-0.6	12.1
1975	44683	562	663	-101	13	12.6	14.8	-2.2	23.1
1976	44610	646	606	40	11	14.5	13.6	0.9	17.0
1977	44536	649	584	65	7	14.6	13.1	1.5	10.8
1978	44463	617	649	-32	13	13.9	14.6	-0.7	21.1
1979	44390	620	630	-10	12	14.0	14.2	-0.2	19.4
1980	44316	577	674	-97	10	13.0	15.2	-2.2	17.3
1981	44243	592	663	-71	9	13.4	15.0	-1.6	15.2
1982	44087	579	678	-99	8	13.1	15.4	-2.3	13.8
1983	43931	630	683	-53	10	14.3	15.5	-1.2	15.9
1984	43776	605	689	-84	8	13.8	15.7	-1.9	13.2
1985	43620	584	711	-127	5	13.4	16.3	-2.9	8.6
1986	43464	568	729	-161	11	13.1	16.8	-3.7	19.4
1987	43309	521	675	-154	7	12.0	15.6	-3.6	13.4
1988	43152	480	642	-162	5	11.1	14.9	-3.8	10.4
1989	42997	510	614	-104	7	11.9	14.3	-2.4	13.7
1990	42841	481	648	-167	3	11.2	15.1	-3.9	6.2
1991	42685	470	677	-207	3	11.0	15.9	-4.9	6.4
1992	42621	447	704	-257	5	10.5	16.5	-6.0	11.2
1993	42558	503	723	-220	2	11.8	17.0	-5.2	4.0
1994	42494	441	693	-252	6	10.4	16.3	-5.9	13.6
1995	42431	489	660	-171	5	11.5	15.6	-4.1	10.2
1996	42367	478	734	-256	6	11.3	17.3	-6.0	12.6
1997	42304	473	725	-252	11	11.2	17.1	-5.9	23.3
1998	42240	444	737	-293	9	10.5	17.4	-6.9	20.3
1999	42177	438	726	-288	3	10.4	17.2	-6.8	6.8
2000	42113	391	735	-344	5	9.3	17.5	-8.2	12.8
2001	42050	474	678	-204	7	11.3	16.1	-4.8	14.8
2002	40928	451	696	-245	2	11.0	17.0	-6.0	4.4
2003	40580	405	682	-277	2	10.0	16.8	-6.8	4.9
2004	40238	443	712	-269	3	11.0	17.7	-6.7	6.8
2005	39912	391	684	-293	6	9.8	17.1	-7.3	15.3

Table. Natural changes of population, Bečej

Year	Number of population	Livebirths	Deaths	Natural increase	Infants deaths	per 1000 population			Infant deaths per 1000 livebirths
						Livebirths	Deaths	Natural increase	
2006	39597	401	619	-218	1	10.1	15.6	-5.5	2.5
2007	39317	367	635	-268	2	9.3	16.2	-6.9	5.4
2008	38965	332	610	-278	3	8.5	15.7	-7.2	9.0
2009	38587	380	590	-210	1	9.8	15.3	-5.5	2.6
2010	38248	328	570	-242	1	8.6	14.9	-6.3	3.0
2011	37385	323	617	-294	6	8.6	16.5	-7.9	18.6
2012	37020	341	624	-283	0	9.2	16.9	-7.6	0.0
2013	36663	338	607	-269	1	9.2	16.6	-7.3	3.0
2014	36399	319	580	-261	2	8.8	15.9	-7.2	6.3
2015	36187	355	528	-173	2	9.8	14.6	-4.8	5.6
2016	35911	327	581	-254	2	9.1	16.2	-7.1	6.1
2017	35567	298	585	-287	0	8.4	16.4	-8.1	0.0
2018	35266	342	577	-235	1	9.7	16.4	-6.7	2.9
2019	34983	281	591	-310	0	8.0	16.9	-8.9	0.0
2020	34675	321	632	-311	3	9.3	18.2	-8.9	9.3
2021	34350	341	749	-408	2	9.9	21.8	-11.9	5.9
2022	30784	286	637	-351	1	9.3	20.7	-11.4	3.5

Source: Vital Statistics, SORS

Definitions

Population size

Number of population in the respective year. The data on the number of population in 1961, 1971, 1981 and 1991 are census data, while for the inter-census years the number of population was calculated as an average inter-census difference. From 2002 are given the population estimates that were calculated according to the census of population results and the annual statistics of natural mechanical population movements.

Livebirths

Absolute number of live births in the course of a year. Live born child means a child giving vital signs after birth (breathing, i.e. heartbeat), even for the shortest time, regardless the mother's pregnancy duration.

Deaths

Absolute number of deaths in the course of a year. Deceased is a person that whenever after having been born live, shows permanently stopped vital signs.

Natural increase

Natural population increase is the number of live births minus the number of deaths.

Infants deaths

Absolute number of infants deaths in the course of a year. Deceased infant is a child that after having been born live and before aged one year, shows permanently stopped vital signs.

Livebirths, per 1 000 population

Livebirths rate is the ratio of the number of live births and the population size in the respective year. The number of live births is divided by the population size and then multiplied by 1000.

Deaths, per 1 000 population

General mortality rate represents the ratio between the number of deaths and the population size in the respective year. The number of deaths is divided by population size and then multiplied by 1000.

Natural increase, per 1 000 population

Natural population increase rate is the difference between the number of live births and the number of deaths, in relation to the population size in the respective year.

Natural population increase rate = (number of live births - number of deaths) / population size * 1000

Infants deaths, per 1 000 livebirths

Infant mortality rate is the ratio of deceased children under 1 year of age and live births in the respective year. The mortality rate is expressed per 1000 live births.

Infant mortality rate = (number of deceased children under 1 year of age / number of live births) * 1000

Additional info:



Download all database data in Excel format:

[Data](#)



DevInfo profiles:

devinfo.stat.gov.rs/SerbiaProfileLauncher/?lang=en



DevInfo online database:

devinfo.stat.gov.rs/vitalna



For additional information or questions please contact:

devinfo@stat.gov.rs