

# Natural changes of population 1961 – 2022

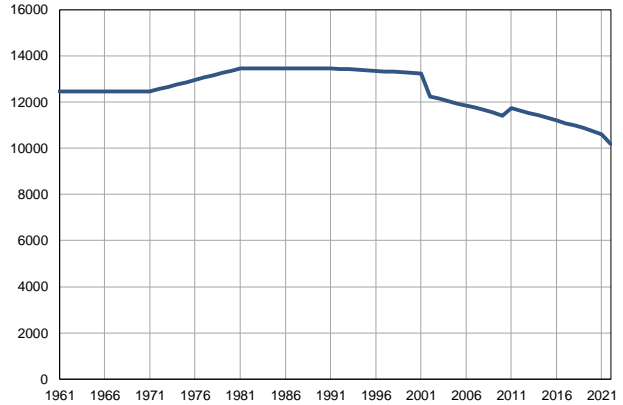
Profile  
July 2023

## Batočina

	1961	2022
Population size	12455	10184
Livebirths, Number	181	85
Deaths, Number	132	188
Natural increase, Number	49	-103
Infants deaths, Number	11	0
Livebirths, per 1,000 population	15	8
Deaths, per 1,000 population	11	19
Natural increase, per 1,000 population	4	-10
Infants deaths, per 1,000 livebirths	61	0

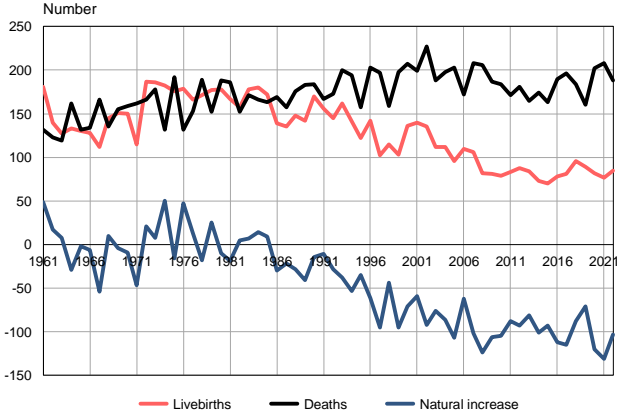
Source: Vital Statistics, SORS

Population size, 1961–2022



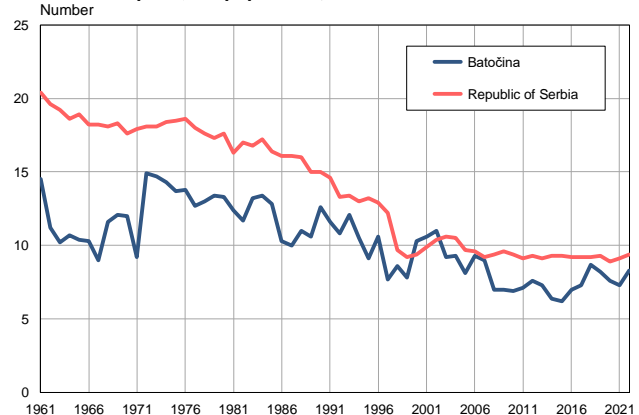
Source: Vital Statistics, SORS

Livebirths, deaths and natural increase, 1961–2022



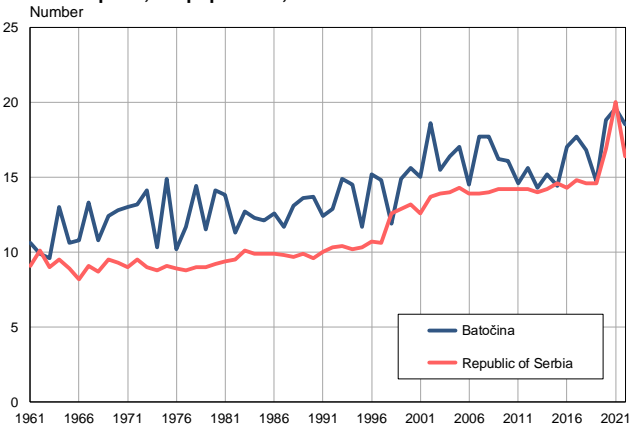
Source: Vital Statistics, SORS

Livebirths per 1,000 population, 1961–2022



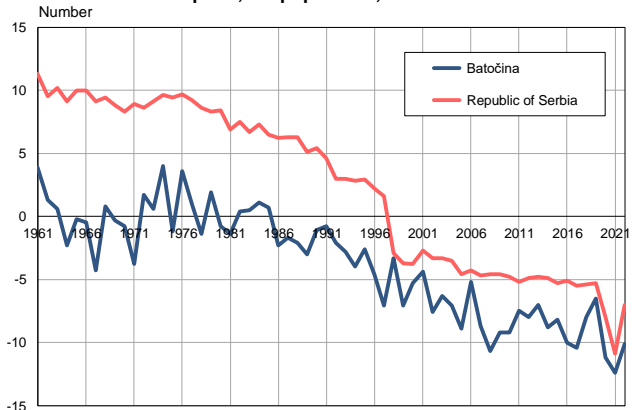
Source: Vital Statistics, SORS

Deaths per 1,000 population, 1961–2022



Source: Vital Statistics, SORS

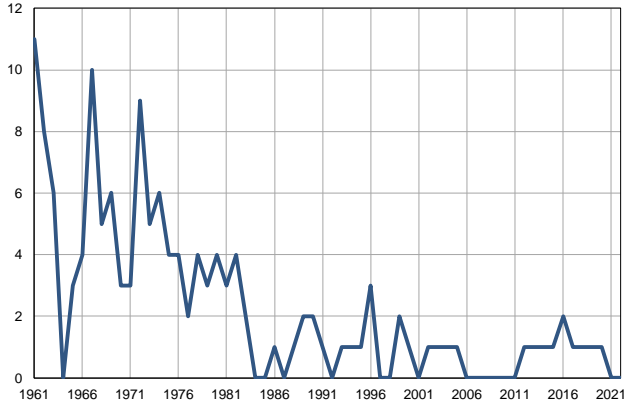
Natural increase per 1,000 population, 1961–2022



Source: Vital Statistics, SORS

**Infants deaths, 1961–2022**

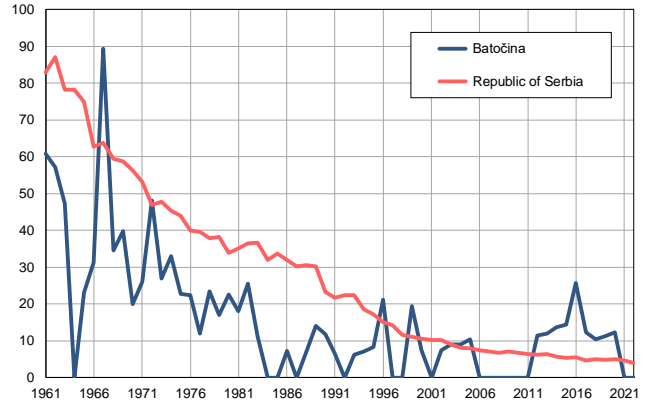
Number



Source: Vital Statistics, SORS

**Infants deaths per 1,000 livebirths, 1961–2022**

Number



Source: Vital Statistics, SORS

**Table. Natural changes of population, Batočina**

Year	Number of population	Livebirths	Deaths	Natural increase	Infants deaths	per 1000 population			Infant deaths per 1000 livebirths
						Livebirths	Deaths	Natural increase	
1961	12455	181	132	49	11	14.5	10.6	3.9	60.8
1962	12455	140	123	17	8	11.2	9.9	1.3	57.1
1963	12456	127	119	8	6	10.2	9.6	0.6	47.2
1964	12456	133	162	-29	0	10.7	13.0	-2.3	0.0
1965	12457	130	132	-2	3	10.4	10.6	-0.2	23.1
1966	12457	128	134	-6	4	10.3	10.8	-0.5	31.3
1967	12457	112	166	-54	10	9.0	13.3	-4.3	89.3
1968	12458	145	135	10	5	11.6	10.8	0.8	34.5
1969	12458	151	155	-4	6	12.1	12.4	-0.3	39.7
1970	12459	150	159	-9	3	12.0	12.8	-0.8	20.0
1971	12459	115	162	-47	3	9.2	13.0	-3.8	26.1
1972	12558	187	166	21	9	14.9	13.2	1.7	48.1
1973	12658	186	178	8	5	14.7	14.1	0.6	26.9
1974	12757	182	132	50	6	14.3	10.3	4.0	33.0
1975	12856	176	192	-16	4	13.7	14.9	-1.2	22.7
1976	12955	179	132	47	4	13.8	10.2	3.6	22.3
1977	13055	166	153	13	2	12.7	11.7	1.0	12.0
1978	13154	171	189	-18	4	13.0	14.4	-1.4	23.4
1979	13253	177	152	25	3	13.4	11.5	1.9	16.9
1980	13353	178	188	-10	4	13.3	14.1	-0.8	22.5
1981	13452	167	186	-19	3	12.4	13.8	-1.4	18.0
1982	13453	157	152	5	4	11.7	11.3	0.4	25.5
1983	13453	178	171	7	2	13.2	12.7	0.5	11.2
1984	13454	180	166	14	0	13.4	12.3	1.1	0.0
1985	13455	172	163	9	0	12.8	12.1	0.7	0.0
1986	13455	139	169	-30	1	10.3	12.6	-2.3	7.2
1987	13456	135	157	-22	0	10.0	11.7	-1.7	0.0
1988	13457	148	176	-28	1	11.0	13.1	-2.1	6.8
1989	13458	142	183	-41	2	10.6	13.6	-3.0	14.1
1990	13458	170	184	-14	2	12.6	13.7	-1.1	11.8
1991	13459	156	167	-11	1	11.6	12.4	-0.8	6.4
1992	13438	145	173	-28	0	10.8	12.9	-2.1	0.0
1993	13416	162	200	-38	1	12.1	14.9	-2.8	6.2
1994	13395	141	194	-53	1	10.5	14.5	-4.0	7.1
1995	13373	122	157	-35	1	9.1	11.7	-2.6	8.2
1996	13352	142	203	-61	3	10.6	15.2	-4.6	21.1
1997	13330	102	197	-95	0	7.7	14.8	-7.1	0.0
1998	13309	115	159	-44	0	8.6	11.9	-3.3	0.0
1999	13287	103	198	-95	2	7.8	14.9	-7.1	19.4
2000	13266	136	207	-71	1	10.3	15.6	-5.3	7.4
2001	13244	140	199	-59	0	10.6	15.0	-4.4	0.0
2002	12231	135	227	-92	1	11.0	18.6	-7.6	7.4
2003	12142	112	188	-76	1	9.2	15.5	-6.3	8.9
2004	12038	112	198	-86	1	9.3	16.4	-7.1	8.9
2005	11925	96	203	-107	1	8.1	17.0	-8.9	10.4

**Table. Natural changes of population, Batočina**

Year	Number of population	Livebirths	Deaths	Natural increase	Infants deaths	per 1000 population			Infant deaths per 1000 livebirths
						Livebirths	Deaths	Natural increase	
2006	11841	110	172	-62	0	9.3	14.5	-5.2	0.0
2007	11771	106	208	-102	0	9.0	17.7	-8.7	0.0
2008	11668	82	206	-124	0	7.0	17.7	-10.7	0.0
2009	11546	81	187	-106	0	7.0	16.2	-9.2	0.0
2010	11418	79	184	-105	0	6.9	16.1	-9.2	0.0
2011	11750	83	171	-88	0	7.1	14.6	-7.5	0.0
2012	11639	88	181	-93	1	7.6	15.6	-8.0	11.4
2013	11525	84	165	-81	1	7.3	14.3	-7.0	11.9
2014	11427	73	174	-101	1	6.4	15.2	-8.8	13.7
2015	11319	70	163	-93	1	6.2	14.4	-8.2	14.3
2016	11200	78	190	-112	2	7.0	17.0	-10.0	25.6
2017	11085	81	196	-115	1	7.3	17.7	-10.4	12.3
2018	10977	96	184	-88	1	8.7	16.8	-8.0	10.4
2019	10878	89	160	-71	1	8.2	14.7	-6.5	11.2
2020	10747	82	202	-120	1	7.6	18.8	-11.2	12.2
2021	10594	77	208	-131	0	7.3	19.6	-12.4	0.0
2022	10184	85	188	-103	0	8.3	18.5	-10.1	0.0

Source: Vital Statistics, SORS

## Definitions

### Population size

Number of population in the respective year. The data on the number of population in 1961, 1971, 1981 and 1991 are census data, while for the inter-census years the number of population was calculated as an average inter-census difference. From 2002 are given the population estimates that were calculated according to the census of population results and the annual statistics of natural mechanical population movements.

### Livebirths

Absolute number of live births in the course of a year. Live born child means a child giving vital signs after birth (breathing, i.e. heartbeat), even for the shortest time, regardless the mother's pregnancy duration.

### Deaths

Absolute number of deaths in the course of a year. Deceased is a person that whenever after having been born live, shows permanently stopped vital signs.

### Natural increase

Natural population increase is the number of live births minus the number of deaths.

### Infants deaths

Absolute number of infants deaths in the course of a year. Deceased infant is a child that after having been born live and before aged one year, shows permanently stopped vital signs.

### Livebirths, per 1 000 population

Livebirths rate is the ratio of the number of live births and the population size in the respective year. The number of live births is divided by the population size and then multiplied by 1000.

### Deaths, per 1 000 population

General mortality rate represents the ratio between the number of deaths and the population size in the respective year. The number of deaths is divided by population size and then multiplied by 1000.

### Natural increase, per 1 000 population

Natural population increase rate is the difference between the number of live births and the number of deaths, in relation to the population size in the respective year.

Natural population increase rate = (number of live births - number of deaths) / population size \* 1000

### Infants deaths, per 1 000 livebirths

Infant mortality rate is the ratio of deceased children under 1 year of age and live births in the respective year. The mortality rate is expressed per 1000 live births.

Infant mortality rate = (number of deceased children under 1 year of age / number of live births) \* 1000

## Additional info:



Download all database data in Excel format:

[Data](#)



DevInfo profiles:

[devinfo.stat.gov.rs/SerbiaProfileLauncher/?lang=en](http://devinfo.stat.gov.rs/SerbiaProfileLauncher/?lang=en)



DevInfo online database:

[devinfo.stat.gov.rs/vitalna](http://devinfo.stat.gov.rs/vitalna)



For additional information or questions please contact:

[devinfo@stat.gov.rs](mailto:devinfo@stat.gov.rs)