

Natural changes of population 1961 – 2022

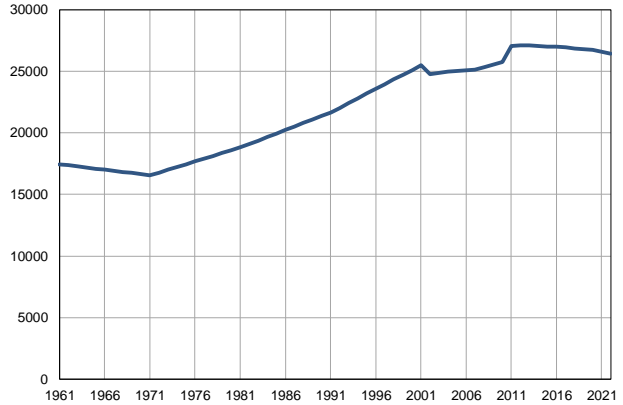
Profile
July 2023

Barajevo

	1961	2022
Population size	17461	26449
Livebirths, Number	238	245
Deaths, Number	169	438
Natural increase, Number	69	-193
Infants deaths, Number	18	0
Livebirths, per 1,000 population	14	9
Deaths, per 1,000 population	10	17
Natural increase, per 1,000 population	4	-7
Infants deaths, per 1,000 livebirths	76	0

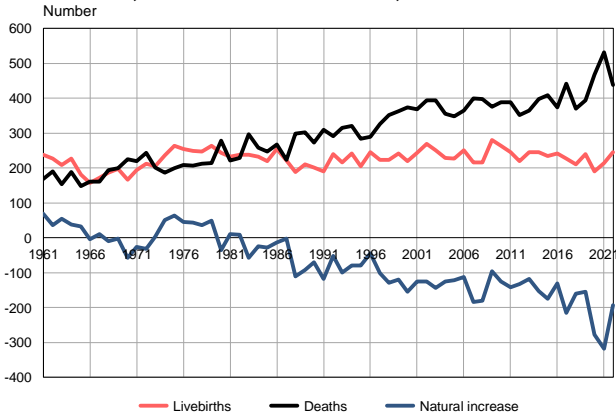
Source: Vital Statistics, SORS

Population size, 1961–2022



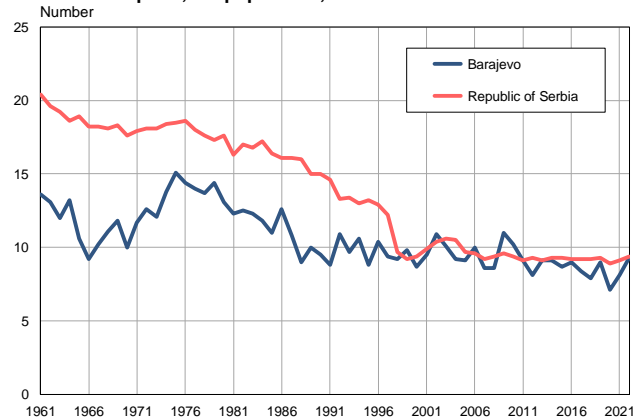
Source: Vital Statistics, SORS

Livebirths, deaths and natural increase, 1961–2022



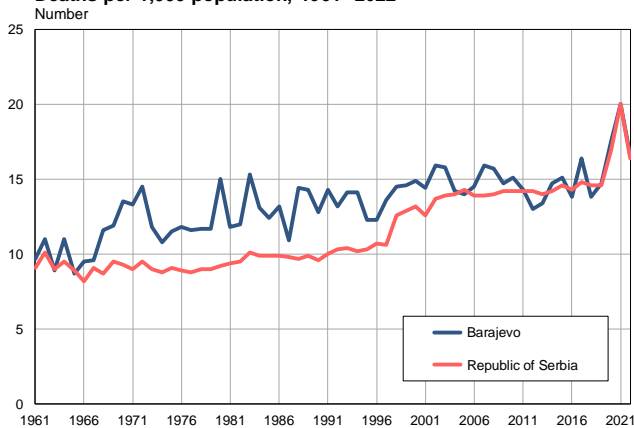
Source: Vital Statistics, SORS

Livebirths per 1,000 population, 1961–2022



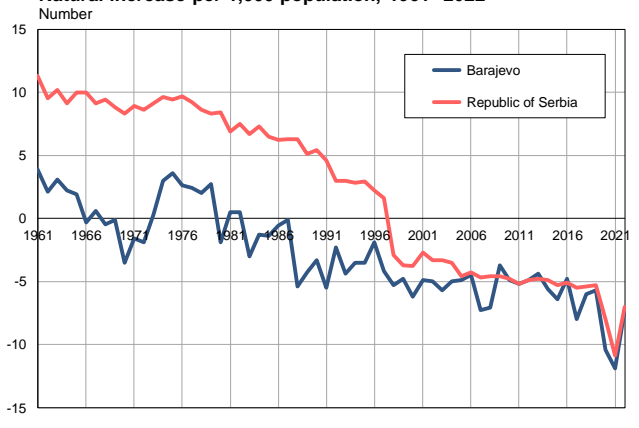
Source: Vital Statistics, SORS

Deaths per 1,000 population, 1961–2022



Source: Vital Statistics, SORS

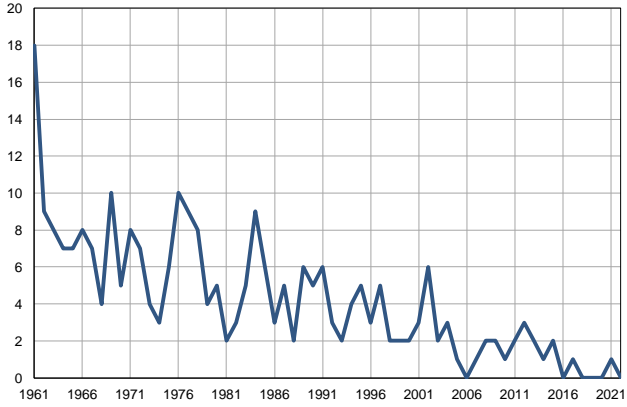
Natural increase per 1,000 population, 1961–2022



Source: Vital Statistics, SORS

Infants deaths, 1961–2022

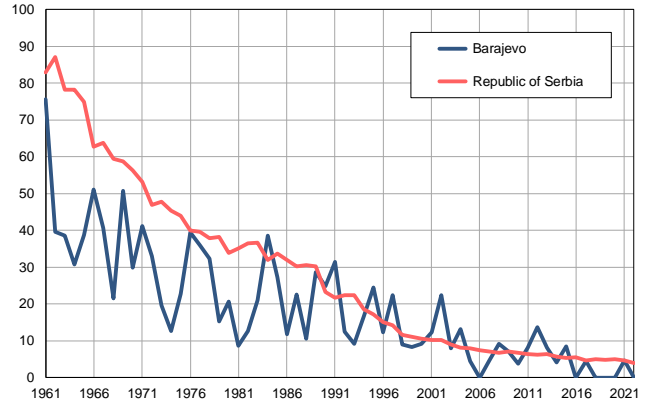
Number



Source: Vital Statistics, SORS

Infants deaths per 1,000 livebirths, 1961–2022

Number



Source: Vital Statistics, SORS

Table. Natural changes of population, Barajevo

Year	Number of population	Livebirths	Deaths	Natural increase	Infants deaths	per 1000 population			Infant deaths per 1000 livebirths
						Livebirths	Deaths	Natural increase	
1961	17461	238	169	69	18	13.6	9.7	3.9	75.6
1962	17370	227	191	36	9	13.1	11.0	2.1	39.6
1963	17279	208	154	54	8	12.0	8.9	3.1	38.5
1964	17188	227	189	38	7	13.2	11.0	2.2	30.8
1965	17097	181	148	33	7	10.6	8.7	1.9	38.7
1966	17006	157	161	-4	8	9.2	9.5	-0.3	51.0
1967	16916	172	162	10	7	10.2	9.6	0.6	40.7
1968	16825	186	195	-9	4	11.1	11.6	-0.5	21.5
1969	16734	197	199	-2	10	11.8	11.9	-0.1	50.8
1970	16643	167	225	-58	5	10.0	13.5	-3.5	29.9
1971	16552	194	220	-26	8	11.7	13.3	-1.6	41.2
1972	16778	212	243	-31	7	12.6	14.5	-1.9	33.0
1973	17005	205	201	4	4	12.1	11.8	0.3	19.5
1974	17231	237	186	51	3	13.8	10.8	3.0	12.7
1975	17457	263	200	63	6	15.1	11.5	3.6	22.8
1976	17684	254	208	46	10	14.4	11.8	2.6	39.4
1977	17910	250	207	43	9	14.0	11.6	2.4	36.0
1978	18136	248	212	36	8	13.7	11.7	2.0	32.3
1979	18362	264	215	49	4	14.4	11.7	2.7	15.2
1980	18588	243	278	-35	5	13.1	15.0	-1.9	20.6
1981	18815	232	222	10	2	12.3	11.8	0.5	8.6
1982	19098	238	229	9	3	12.5	12.0	0.5	12.6
1983	19381	239	297	-58	5	12.3	15.3	-3.0	20.9
1984	19665	233	258	-25	9	11.8	13.1	-1.3	38.6
1985	19948	220	248	-28	6	11.0	12.4	-1.4	27.3
1986	20231	254	268	-14	3	12.6	13.2	-0.6	11.8
1987	20514	221	223	-2	5	10.8	10.9	-0.1	22.6
1988	20797	188	299	-111	2	9.0	14.4	-5.4	10.6
1989	21081	210	302	-92	6	10.0	14.3	-4.3	28.6
1990	21364	202	273	-71	5	9.5	12.8	-3.3	24.8
1991	21647	191	309	-118	6	8.8	14.3	-5.5	31.4
1992	22030	240	291	-51	3	10.9	13.2	-2.3	12.5
1993	22414	217	316	-99	2	9.7	14.1	-4.4	9.2
1994	22797	241	321	-80	4	10.6	14.1	-3.5	16.6
1995	23181	205	284	-79	5	8.8	12.3	-3.5	24.4
1996	23564	246	290	-44	3	10.4	12.3	-1.9	12.2
1997	23948	224	326	-102	5	9.4	13.6	-4.2	22.3
1998	24331	224	352	-128	2	9.2	14.5	-5.3	8.9
1999	24715	242	362	-120	2	9.8	14.6	-4.8	8.3
2000	25098	219	373	-154	2	8.7	14.9	-6.2	9.1
2001	25482	243	368	-125	3	9.5	14.4	-4.9	12.3
2002	24768	269	395	-126	6	10.9	15.9	-5.0	22.3
2003	24874	251	394	-143	2	10.1	15.8	-5.7	8.0
2004	24948	229	355	-126	3	9.2	14.2	-5.0	13.1
2005	25000	228	349	-121	1	9.1	14.0	-4.9	4.4

Table. Natural changes of population, Barajevo

Year	Number of population	Livebirths	Deaths	Natural increase	Infants deaths	per 1000 population			Infant deaths per 1000 livebirths
						Livebirths	Deaths	Natural increase	
2006	25053	251	364	-113	0	10.0	14.5	-4.5	0.0
2007	25146	216	400	-184	1	8.6	15.9	-7.3	4.6
2008	25315	217	397	-180	2	8.6	15.7	-7.1	9.2
2009	25563	280	376	-96	2	11.0	14.7	-3.7	7.1
2010	25753	263	389	-126	1	10.2	15.1	-4.9	3.8
2011	27048	246	388	-142	2	9.1	14.3	-5.2	8.1
2012	27125	219	352	-133	3	8.1	13.0	-4.9	13.7
2013	27084	246	364	-118	2	9.1	13.4	-4.4	8.1
2014	27031	245	397	-152	1	9.1	14.7	-5.6	4.1
2015	27013	234	408	-174	2	8.7	15.1	-6.4	8.5
2016	27024	242	373	-131	0	9.0	13.8	-4.8	0.0
2017	26964	227	442	-215	1	8.4	16.4	-8.0	4.4
2018	26855	211	371	-160	0	7.9	13.8	-6.0	0.0
2019	26798	240	394	-154	0	9.0	14.7	-5.7	0.0
2020	26716	190	467	-277	0	7.1	17.5	-10.4	0.0
2021	26608	215	532	-317	1	8.1	20.0	-11.9	4.7
2022	26449	245	438	-193	0	9.3	16.6	-7.3	0.0

Source: Vital Statistics, SORS

Definitions

Population size

Number of population in the respective year. The data on the number of population in 1961, 1971, 1981 and 1991 are census data, while for the inter-census years the number of population was calculated as an average inter-census difference. From 2002 are given the population estimates that were calculated according to the census of population results and the annual statistics of natural mechanical population movements.

Livebirths

Absolute number of live births in the course of a year. Live born child means a child giving vital signs after birth (breathing, i.e. heartbeat), even for the shortest time, regardless the mother's pregnancy duration.

Deaths

Absolute number of deaths in the course of a year. Deceased is a person that whenever after having been born live, shows permanently stopped vital signs.

Natural increase

Natural population increase is the number of live births minus the number of deaths.

Infants deaths

Absolute number of infants deaths in the course of a year. Deceased infant is a child that after having been born live and before aged one year, shows permanently stopped vital signs.

Livebirths, per 1 000 population

Livebirths rate is the ratio of the number of live births and the population size in the respective year. The number of live births is divided by the population size and then multiplied by 1000.

Deaths, per 1 000 population

General mortality rate represents the ratio between the number of deaths and the population size in the respective year. The number of deaths is divided by population size and then multiplied by 1000.

Natural increase, per 1 000 population

Natural population increase rate is the difference between the number of live births and the number of deaths, in relation to the population size in the respective year.

Natural population increase rate = (number of live births - number of deaths) / population size * 1000

Infants deaths, per 1 000 livebirths

Infant mortality rate is the ratio of deceased children under 1 year of age and live births in the respective year. The mortality rate is expressed per 1000 live births.

Infant mortality rate = (number of deceased children under 1 year of age / number of live births) * 1000

Additional info:



Download all database data in Excel format:

[Data](#)



DevInfo profiles:

devinfo.stat.gov.rs/SerbiaProfileLauncher/?lang=en



DevInfo online database:

devinfo.stat.gov.rs/vitalna



For additional information or questions please contact:

devinfo@stat.gov.rs