

Natural changes of population 1961 – 2022

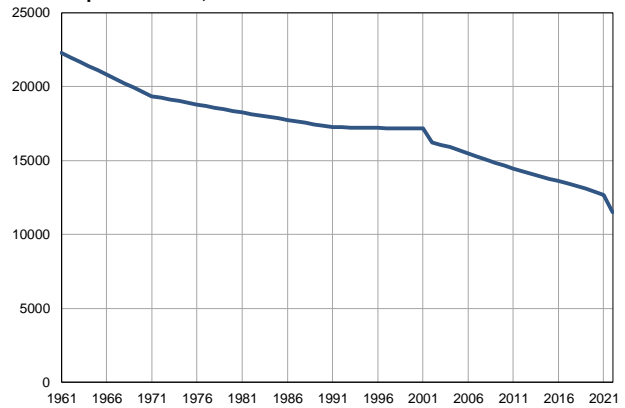
Profile
July 2023

Bač

	1961	2022
Population size	22262	11484
Livebirths, Number	436	105
Deaths, Number	181	238
Natural increase, Number	255	-133
Infants deaths, Number	31	1
Livebirths, per 1,000 population	20	9
Deaths, per 1,000 population	8	21
Natural increase, per 1,000 population	12	-12
Infants deaths, per 1,000 livebirths	71	10

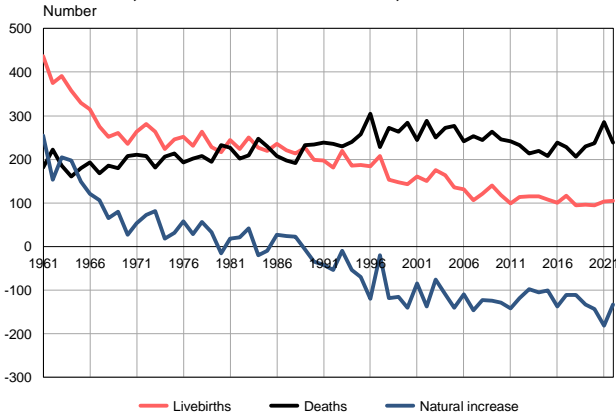
Source: Vital Statistics, SORS

Population size, 1961–2022



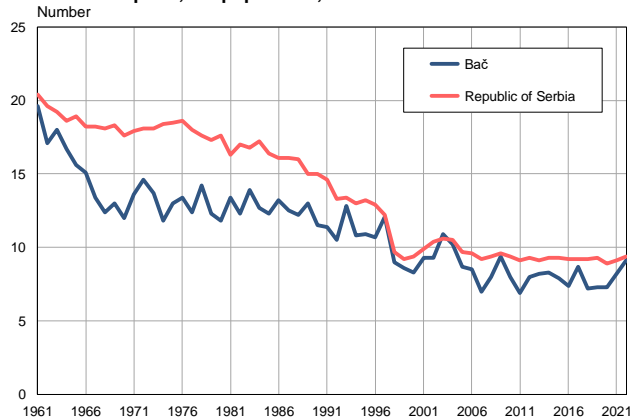
Source: Vital Statistics, SORS

Livebirths, deaths and natural increase, 1961–2022



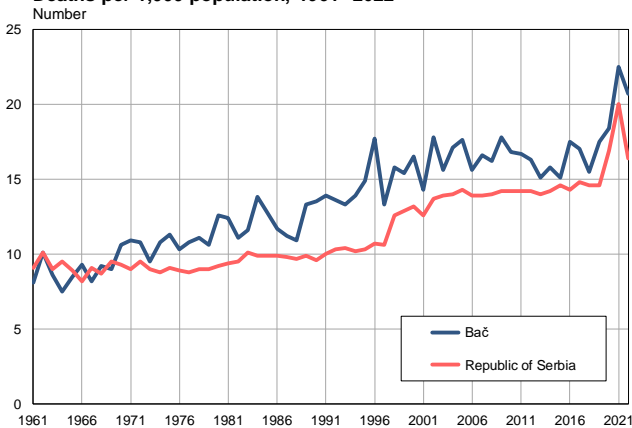
Source: Vital Statistics, SORS

Livebirths per 1,000 population, 1961–2022



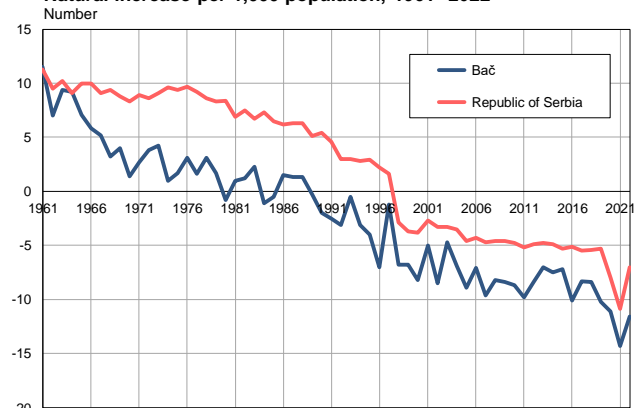
Source: Vital Statistics, SORS

Deaths per 1,000 population, 1961–2022



Source: Vital Statistics, SORS

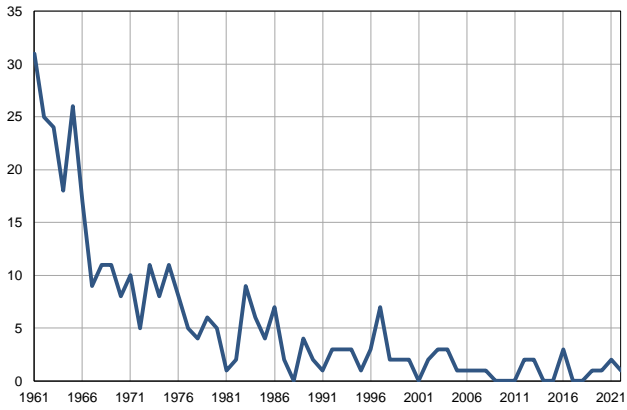
Natural increase per 1,000 population, 1961–2022



Source: Vital Statistics, SORS

Infants deaths, 1961–2022

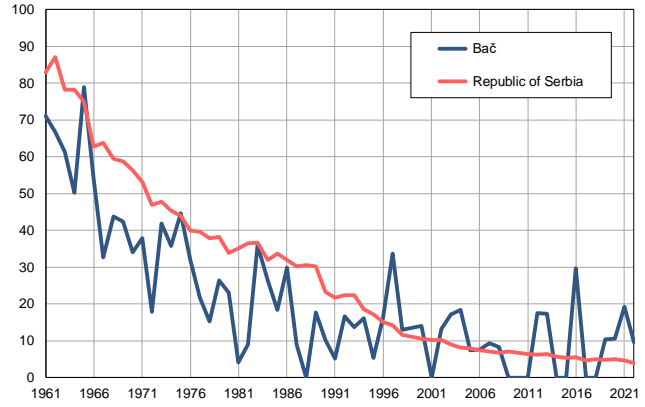
Number



Source: Vital Statistics, SORS

Infants deaths per 1,000 livebirths, 1961–2022

Number



Source: Vital Statistics, SORS

Table. Natural changes of population, Bač

Year	Number of population	Livebirths	Deaths	Natural increase	Infants deaths	per 1000 population			Infant deaths per 1000 livebirths
						Livebirths	Deaths	Natural increase	
1961	22262	436	181	255	31	19.6	8.1	11.5	71.1
1962	21971	375	222	153	25	17.1	10.1	7.0	66.7
1963	21680	391	186	205	24	18.0	8.6	9.4	61.4
1964	21388	358	161	197	18	16.7	7.5	9.2	50.3
1965	21096	329	180	149	26	15.6	8.5	7.1	79.0
1966	20805	314	193	121	17	15.1	9.3	5.8	54.1
1967	20514	275	168	107	9	13.4	8.2	5.2	32.7
1968	20222	251	186	65	11	12.4	9.2	3.2	43.8
1969	19931	260	180	80	11	13.0	9.0	4.0	42.3
1970	19639	235	208	27	8	12.0	10.6	1.4	34.0
1971	19348	264	210	54	10	13.6	10.9	2.7	37.9
1972	19238	281	208	73	5	14.6	10.8	3.8	17.8
1973	19128	263	181	82	11	13.7	9.5	4.2	41.8
1974	19017	224	206	18	8	11.8	10.8	1.0	35.7
1975	18906	246	214	32	11	13.0	11.3	1.7	44.7
1976	18795	251	193	58	8	13.4	10.3	3.1	31.9
1977	18685	231	202	29	5	12.4	10.8	1.6	21.6
1978	18575	264	207	57	4	14.2	11.1	3.1	15.2
1979	18464	228	195	33	6	12.3	10.6	1.7	26.3
1980	18354	216	232	-16	5	11.8	12.6	-0.8	23.1
1981	18243	245	227	18	1	13.4	12.4	1.0	4.1
1982	18144	223	202	21	2	12.3	11.1	1.2	9.0
1983	18044	250	209	41	9	13.9	11.6	2.3	36.0
1984	17944	227	247	-20	6	12.7	13.8	-1.1	26.4
1985	17844	219	229	-10	4	12.3	12.8	-0.5	18.3
1986	17746	235	208	27	7	13.2	11.7	1.5	29.8
1987	17647	221	197	24	2	12.5	11.2	1.3	9.0
1988	17547	214	191	23	0	12.2	10.9	1.3	0.0
1989	17447	226	232	-6	4	13.0	13.3	-0.3	17.7
1990	17348	199	234	-35	2	11.5	13.5	-2.0	10.1
1991	17249	197	239	-42	1	11.4	13.9	-2.5	5.1
1992	17239	181	235	-54	3	10.5	13.6	-3.1	16.6
1993	17230	220	229	-9	3	12.8	13.3	-0.5	13.6
1994	17220	186	240	-54	3	10.8	13.9	-3.1	16.1
1995	17211	187	257	-70	1	10.9	14.9	-4.0	5.3
1996	17201	184	304	-120	3	10.7	17.7	-7.0	16.3
1997	17192	208	228	-20	7	12.1	13.3	-1.2	33.7
1998	17182	154	272	-118	2	9.0	15.8	-6.8	13.0
1999	17173	148	264	-116	2	8.6	15.4	-6.8	13.5
2000	17163	143	284	-141	2	8.3	16.5	-8.2	14.0
2001	17154	160	245	-85	0	9.3	14.3	-5.0	0.0
2002	16226	151	289	-138	2	9.3	17.8	-8.5	13.2
2003	16066	175	250	-75	3	10.9	15.6	-4.7	17.1
2004	15925	163	272	-109	3	10.2	17.1	-6.9	18.4
2005	15711	136	276	-140	1	8.7	17.6	-8.9	7.4

Table. Natural changes of population, Bač

Year	Number of population	Livebirths	Deaths	Natural increase	Infants deaths	per 1000 population			Infant deaths per 1000 livebirths
						Livebirths	Deaths	Natural increase	
2006	15493	131	241	-110	1	8.5	15.6	-7.1	7.6
2007	15283	107	253	-146	1	7.0	16.6	-9.6	9.3
2008	15054	121	244	-123	1	8.0	16.2	-8.2	8.3
2009	14850	140	264	-124	0	9.4	17.8	-8.4	0.0
2010	14676	118	246	-128	0	8.0	16.8	-8.7	0.0
2011	14425	99	241	-142	0	6.9	16.7	-9.8	0.0
2012	14251	114	233	-119	2	8.0	16.3	-8.4	17.5
2013	14097	115	213	-98	2	8.2	15.1	-7.0	17.4
2014	13917	115	220	-105	0	8.3	15.8	-7.5	0.0
2015	13753	108	208	-100	0	7.9	15.1	-7.2	0.0
2016	13601	101	238	-137	3	7.4	17.5	-10.1	29.7
2017	13439	117	228	-111	0	8.7	17.0	-8.3	0.0
2018	13265	95	206	-111	0	7.2	15.5	-8.4	0.0
2019	13079	96	229	-133	1	7.3	17.5	-10.2	10.4
2020	12901	94	237	-143	1	7.3	18.4	-11.1	10.6
2021	12688	104	285	-181	2	8.2	22.5	-14.3	19.2
2022	11484	105	238	-133	1	9.1	20.7	-11.6	9.5

Source: Vital Statistics, SORS

Definitions

Population size

Number of population in the respective year. The data on the number of population in 1961, 1971, 1981 and 1991 are census data, while for the inter-census years the number of population was calculated as an average inter-census difference. From 2002 are given the population estimates that were calculated according to the census of population results and the annual statistics of natural mechanical population movements.

Livebirths

Absolute number of live births in the course of a year. Live born child means a child giving vital signs after birth (breathing, i.e. heartbeat), even for the shortest time, regardless the mother's pregnancy duration.

Deaths

Absolute number of deaths in the course of a year. Deceased is a person that whenever after having been born live, shows permanently stopped vital signs.

Natural increase

Natural population increase is the number of live births minus the number of deaths.

Infants deaths

Absolute number of infants deaths in the course of a year. Deceased infant is a child that after having been born live and before aged one year, shows permanently stopped vital signs.

Livebirths, per 1 000 population

Livebirths rate is the ratio of the number of live births and the population size in the respective year. The number of live births is divided by the population size and then multiplied by 1000.

Deaths, per 1 000 population

General mortality rate represents the ratio between the number of deaths and the population size in the respective year. The number of deaths is divided by population size and then multiplied by 1000.

Natural increase, per 1 000 population

Natural population increase rate is the difference between the number of live births and the number of deaths, in relation to the population size in the respective year.

Natural population increase rate = (number of live births - number of deaths) / population size * 1000

Infants deaths, per 1 000 livebirths

Infant mortality rate is the ratio of deceased children under 1 year of age and live births in the respective year. The mortality rate is expressed per 1000 live births.

Infant mortality rate = (number of deceased children under 1 year of age / number of live births) * 1000

Additional info:



Download all database data in Excel format:

[Data](#)



DevInfo profiles:

devinfo.stat.gov.rs/SerbiaProfileLauncher/?lang=en



DevInfo online database:

devinfo.stat.gov.rs/vitalna



For additional information or questions please contact:

devinfo@stat.gov.rs