

## Natural changes of population 1961 – 2020

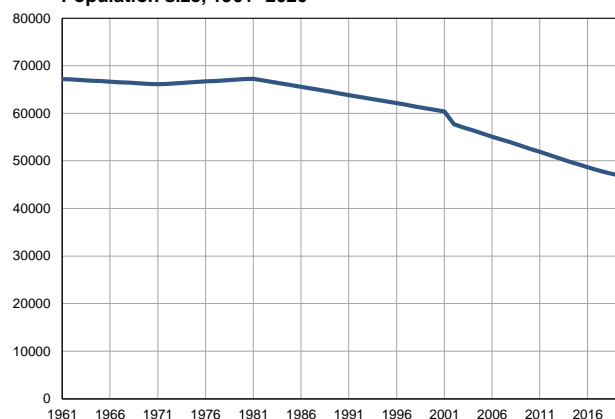
Profile  
July 2021

### Aleksinac

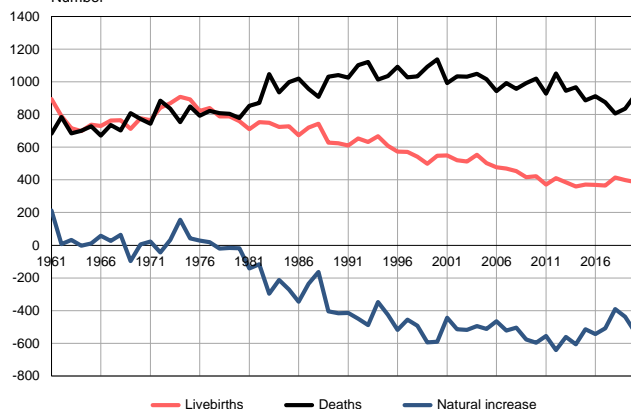
	1961	2020
Population size	67200	46541
Livebirths, Number	895	387
Deaths, Number	683	918
Natural increase, Number	212	-531
Infants deaths, Number	66	2
Livebirths, per 1,000 population	13	8
Deaths, per 1,000 population	10	20
Natural increase, per 1,000 population	3	-11
Infants deaths, per 1,000 livebirths	74	5

Source: Vital Statistics, SORS

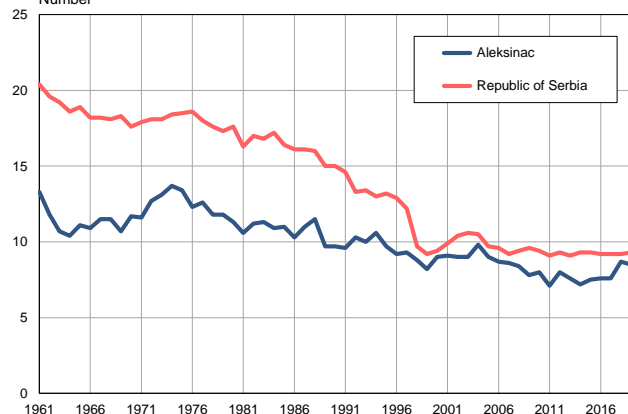
Population size, 1961–2020



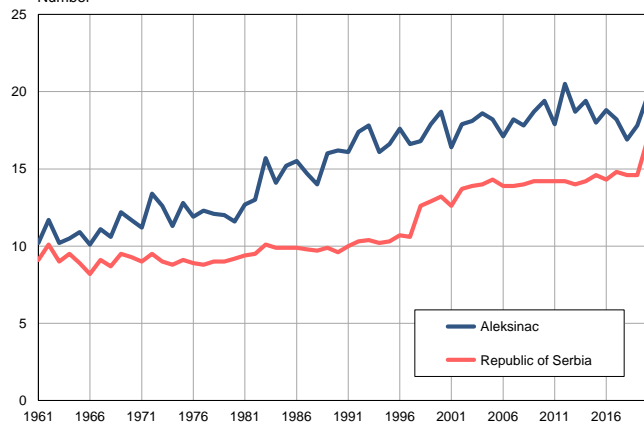
Livebirths, deaths and natural increase, 1961–2020  
Number



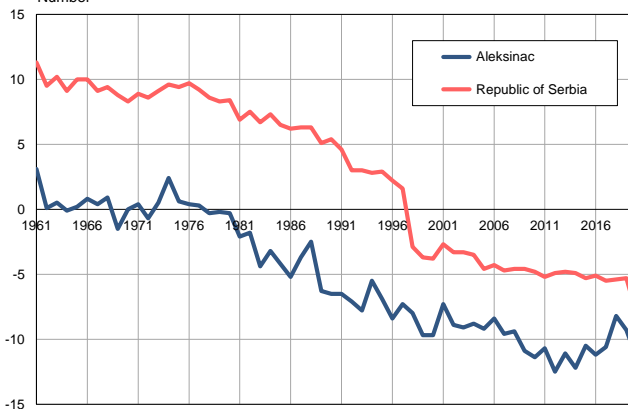
Livebirths per 1,000 population, 1961–2020  
Number



Deaths per 1,000 population, 1961–2020  
Number

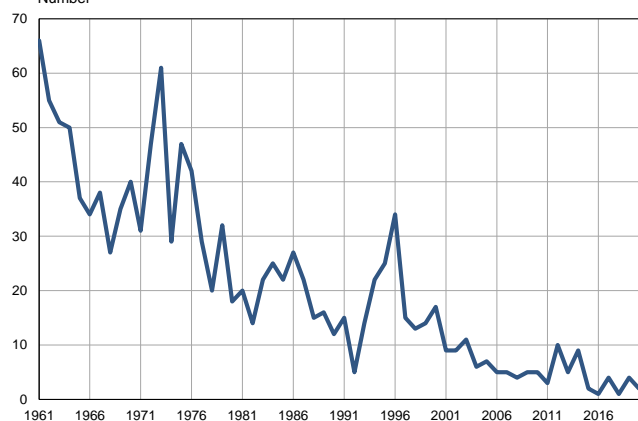


Natural increase per 1,000 population, 1961–2020  
Number



**Infants deaths, 1961–2020**

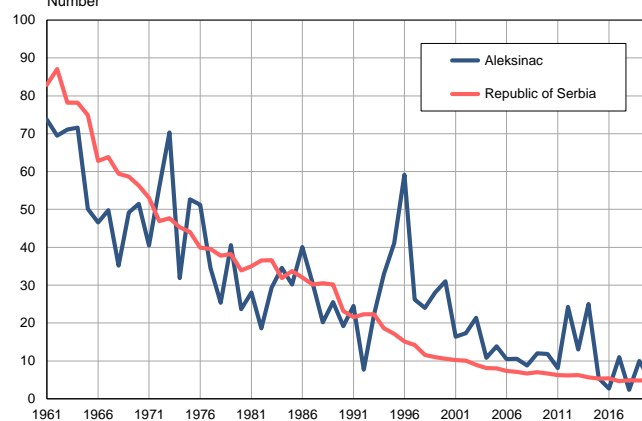
Number



Source: Vital Statistics, SORS

**Infants deaths per 1,000 livebirths, 1961–2020**

Number



Source: Vital Statistics, SORS

**Table. Natural changes of population, Aleksinac**

Year	Number of population	Livebirths	Deaths	Natural increase	Infants deaths	per 1000 population			Infant deaths per 1000 livebirths
						Livebirths	Deaths	Natural increase	
1961	67200	895	683	212	66	13.3	10.2	3.1	73.7
1962	67088	791	785	6	55	11.8	11.7	0.1	69.5
1963	66976	717	685	32	51	10.7	10.2	0.5	71.1
1964	66865	698	701	-3	50	10.4	10.5	-0.1	71.6
1965	66753	738	728	10	37	11.1	10.9	0.2	50.1
1966	66641	729	671	58	34	10.9	10.1	0.8	46.6
1967	66530	763	736	27	38	11.5	11.1	0.4	49.8
1968	66418	766	702	64	27	11.5	10.6	0.9	35.2
1969	66306	712	809	-97	35	10.7	12.2	-1.5	49.2
1970	66194	776	772	4	40	11.7	11.7	0.0	51.5
1971	66082	766	743	23	31	11.6	11.2	0.4	40.5
1972	66202	841	885	-44	47	12.7	13.4	-0.7	55.9
1973	66323	868	836	32	61	13.1	12.6	0.5	70.3
1974	66443	909	753	156	29	13.7	11.3	2.4	31.9
1975	66564	892	850	42	47	13.4	12.8	0.6	52.7
1976	66683	821	793	28	42	12.3	11.9	0.4	51.2
1977	66804	839	821	18	29	12.6	12.3	0.3	34.6
1978	66925	788	808	-20	20	11.8	12.1	-0.3	25.4
1979	67045	789	805	-16	32	11.8	12.0	-0.2	40.6
1980	67166	760	779	-19	18	11.3	11.6	-0.3	23.7
1981	67286	711	853	-142	20	10.6	12.7	-2.1	28.1
1982	66942	753	870	-117	14	11.2	13.0	-1.8	18.6
1983	66598	750	1047	-297	22	11.3	15.7	-4.4	29.3
1984	66253	723	935	-212	25	10.9	14.1	-3.2	34.6
1985	65909	728	999	-271	22	11.0	15.2	-4.2	30.2
1986	65565	673	1019	-346	27	10.3	15.5	-5.2	40.1
1987	65221	720	957	-237	22	11.0	14.7	-3.7	30.6
1988	64877	744	908	-164	15	11.5	14.0	-2.5	20.2
1989	64532	627	1031	-404	16	9.7	16.0	-6.3	25.5
1990	64188	624	1041	-417	12	9.7	16.2	-6.5	19.2
1991	63844	611	1025	-414	15	9.6	16.1	-6.5	24.5
1992	63498	653	1102	-449	5	10.3	17.4	-7.1	7.7
1993	63153	632	1121	-489	14	10.0	17.8	-7.8	22.2
1994	62807	667	1014	-347	22	10.6	16.1	-5.5	33.0
1995	62462	608	1035	-427	25	9.7	16.6	-6.9	41.1
1996	62116	574	1093	-519	34	9.2	17.6	-8.4	59.2
1997	61772	572	1028	-456	15	9.3	16.6	-7.3	26.2
1998	61425	541	1033	-492	13	8.8	16.8	-8.0	24.0
1999	61080	498	1093	-595	14	8.2	17.9	-9.7	28.1
2000	60734	548	1138	-590	17	9.0	18.7	-9.7	31.0
2001	60389	549	992	-443	9	9.1	16.4	-7.3	16.4
2002	57668	520	1034	-514	9	9.0	17.9	-8.9	17.3
2003	57059	513	1031	-518	11	9.0	18.1	-9.1	21.4
2004	56396	554	1049	-495	6	9.8	18.6	-8.8	10.8
2005	55741	503	1015	-512	7	9.0	18.2	-9.2	13.9

**Table. Natural changes of population, Aleksinac**

Year	Number of population	Livebirths	Deaths	Natural increase	Infants deaths	per 1000 population			Infant deaths per 1000 livebirths
						Livebirths	Deaths	Natural increase	
2006	55094	477	943	-466	5	8.7	17.1	-8.4	10.5
2007	54467	470	993	-523	5	8.6	18.2	-9.6	10.6
2008	53833	453	958	-505	4	8.4	17.8	-9.4	8.8
2009	53222	417	993	-576	5	7.8	18.7	-10.9	12.0
2010	52554	422	1019	-597	5	8.0	19.4	-11.4	11.8
2011	51903	371	927	-556	3	7.1	17.9	-10.7	8.1
2012	51215	411	1052	-641	10	8.0	20.5	-12.5	24.3
2013	50543	385	946	-561	5	7.6	18.7	-11.1	13.0
2014	49928	360	967	-607	9	7.2	19.4	-12.2	25.0
2015	49290	371	886	-515	2	7.5	18.0	-10.5	5.4
2016	48671	370	913	-543	1	7.6	18.8	-11.2	2.7
2017	48087	365	874	-509	4	7.6	18.2	-10.6	11.0
2018	47562	415	806	-391	1	8.7	16.9	-8.2	2.4
2019	47096	399	836	-437	4	8.5	17.8	-9.3	10.0
2020	46541	387	918	-531	2	8.3	19.7	-11.4	5.2

Source: Vital Statistics, SORS

## Definitions

### Population size

Number of population in the respective year. The data on the number of population in 1961, 1971, 1981 and 1991 are census data, while for the inter-census years the number of population was calculated as an average inter-census difference. From 2002 are given the population estimates that were calculated according to the census of population results and the annual statistics of natural mechanical population movements.

### Livebirths

Absolute number of live births in the course of a year. Live born child means a child giving vital signs after birth (breathing, i.e. heartbeat), even for the shortest time, regardless the mother's pregnancy duration.

### Deaths

Absolute number of deaths in the course of a year. Deceased is a person that whenever after having been born live, shows permanently stopped vital signs.

### Natural increase

Natural population increase is the number of live births minus the number of deaths.

### Infants deaths

Absolute number of infants deaths in the course of a year. Deceased infant is a child that after having been born live and before aged one year, shows permanently stopped vital signs.

### Livebirths, per 1 000 population

Livebirths rate is the ratio of the number of live births and the population size in the respective year. The number of live births is divided by the population size and then multiplied by 1000.

### Deaths, per 1 000 population

General mortality rate represents the ratio between the number of deaths and the population size in the respective year. The number of deaths is divided by population size and then multiplied by 1000.

### Natural increase, per 1 000 population

Natural population increase rate is the difference between the number of live births and the number of deaths, in relation to the population size in the respective year.

Natural population increase rate = (number of live births - number of deaths) / population size \* 1000

### Infants deaths, per 1 000 livebirths

Infant mortality rate is the ratio of deceased children under 1 year of age and live births in the respective year. The mortality rate is expressed per 1000 live births.

Infant mortality rate = (number of deceased children under 1 year of age / number of live births) \* 1000

## Additional info:



Download all database data in Excel format:

[Data](#)



DevInfo profiles:

[devinfo.stat.gov.rs/SerbiaProfileLauncher/?lang=en](http://devinfo.stat.gov.rs/SerbiaProfileLauncher/?lang=en)



DevInfo online database:

[devinfo.stat.gov.rs/vitalna](http://devinfo.stat.gov.rs/vitalna)



For additional information or questions please contact:

[devinfo@stat.gov.rs](mailto:devinfo@stat.gov.rs)