

Natural changes of population 1961 – 2022

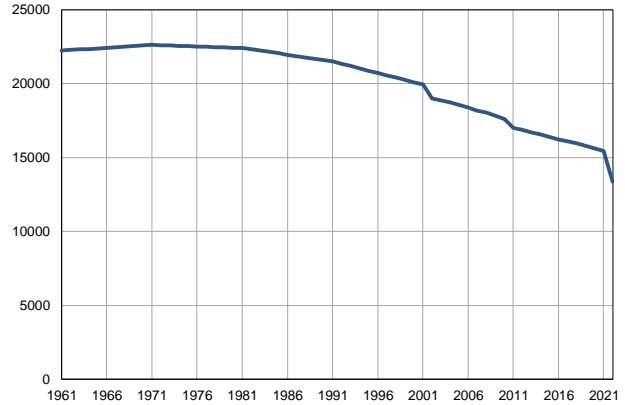
Profile
July 2023

Ada

	1961	2022
Population size	22234	13344
Livebirths, Number	345	116
Deaths, Number	231	309
Natural increase, Number	114	-193
Infants deaths, Number	21	1
Livebirths, per 1,000 population	16	9
Deaths, per 1,000 population	10	23
Natural increase, per 1,000 population	5	-15
Infants deaths, per 1,000 livebirths	61	9

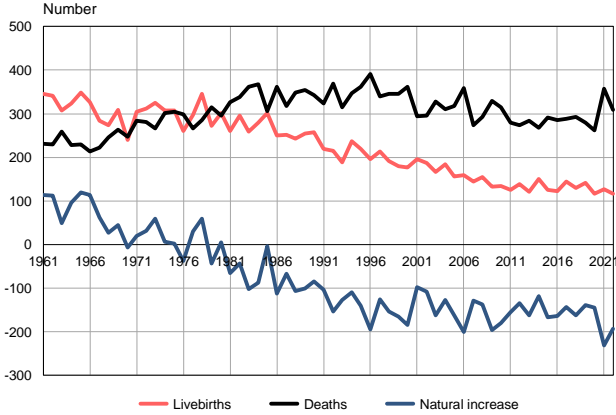
Source: Vital Statistics, SORS

Population size, 1961–2022



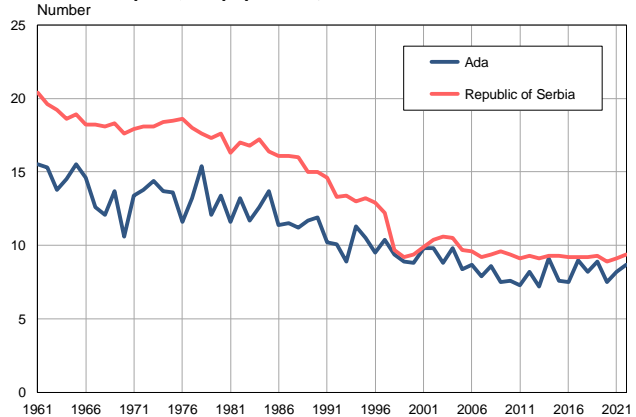
Source: Vital Statistics, SORS

Livebirths, deaths and natural increase, 1961–2022



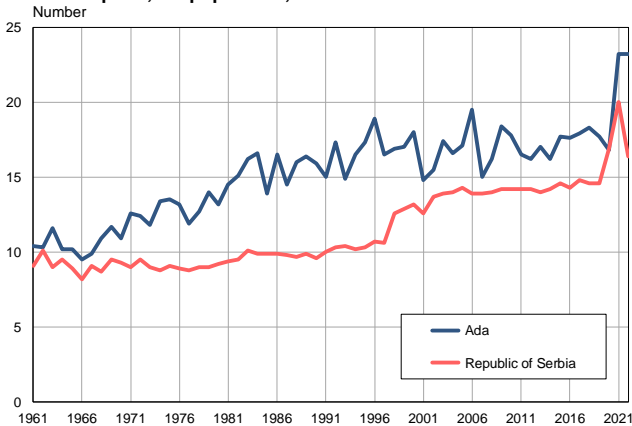
Source: Vital Statistics, SORS

Livebirths per 1,000 population, 1961–2022



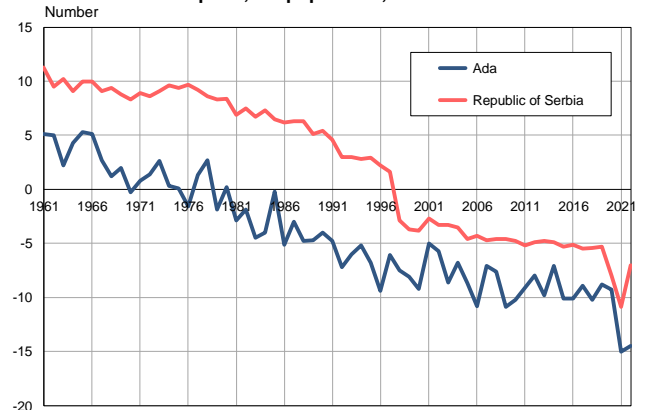
Source: Vital Statistics, SORS

Deaths per 1,000 population, 1961–2022



Source: Vital Statistics, SORS

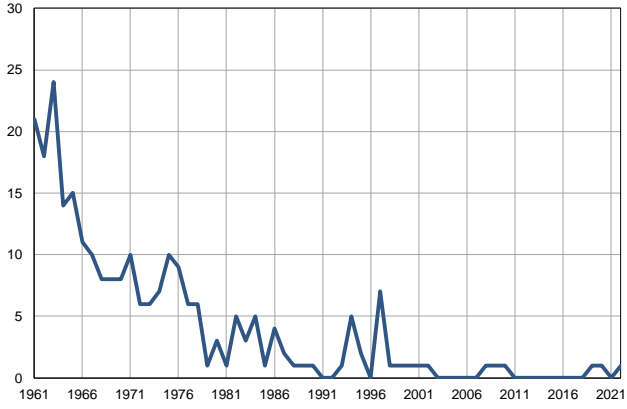
Natural increase per 1,000 population, 1961–2022



Source: Vital Statistics, SORS

Infants deaths, 1961–2022

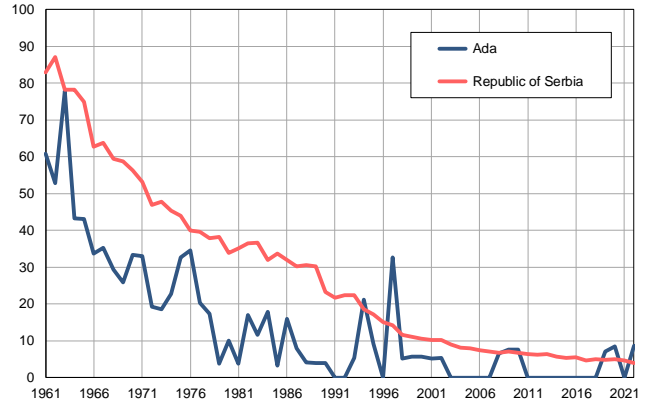
Number



Source: Vital Statistics, SORS

Infants deaths per 1,000 livebirths, 1961–2022

Number



Source: Vital Statistics, SORS

Table. Natural changes of population, Ada

Year	Number of population	Livebirths	Deaths	Natural increase	Infants deaths	per 1000 population			Infant deaths per 1000 livebirths
						Livebirths	Deaths	Natural increase	
1961	22234	345	231	114	21	15.5	10.4	5.1	60.9
1962	22272	341	229	112	18	15.3	10.3	5.0	52.8
1963	22309	308	259	49	24	13.8	11.6	2.2	77.9
1964	22347	324	228	96	14	14.5	10.2	4.3	43.2
1965	22385	348	229	119	15	15.5	10.2	5.3	43.1
1966	22423	327	213	114	11	14.6	9.5	5.1	33.6
1967	22460	284	222	62	10	12.6	9.9	2.7	35.2
1968	22498	273	246	27	8	12.1	10.9	1.2	29.3
1969	22536	309	264	45	8	13.7	11.7	2.0	25.9
1970	22573	240	247	-7	8	10.6	10.9	-0.3	33.3
1971	22611	304	284	20	10	13.4	12.6	0.8	32.9
1972	22591	312	281	31	6	13.8	12.4	1.4	19.2
1973	22570	325	266	59	6	14.4	11.8	2.6	18.5
1974	22550	308	302	6	7	13.7	13.4	0.3	22.7
1975	22530	307	305	2	10	13.6	13.5	0.1	32.6
1976	22510	261	298	-37	9	11.6	13.2	-1.6	34.5
1977	22489	297	267	30	6	13.2	11.9	1.3	20.2
1978	22469	346	286	60	6	15.4	12.7	2.7	17.3
1979	22449	272	315	-43	1	12.1	14.0	-1.9	3.7
1980	22428	301	296	5	3	13.4	13.2	0.2	10.0
1981	22408	260	326	-66	1	11.6	14.5	-2.9	3.8
1982	22318	295	338	-43	5	13.2	15.1	-1.9	16.9
1983	22228	259	361	-102	3	11.7	16.2	-4.5	11.6
1984	22137	280	367	-87	5	12.6	16.6	-4.0	17.9
1985	22047	302	306	-4	1	13.7	13.9	-0.2	3.3
1986	21957	250	362	-112	4	11.4	16.5	-5.1	16.0
1987	21867	251	318	-67	2	11.5	14.5	-3.0	8.0
1988	21777	243	349	-106	1	11.2	16.0	-4.8	4.1
1989	21686	254	355	-101	1	11.7	16.4	-4.7	3.9
1990	21596	258	343	-85	1	11.9	15.9	-4.0	3.9
1991	21506	219	323	-104	0	10.2	15.0	-4.8	0.0
1992	21348	215	369	-154	0	10.1	17.3	-7.2	0.0
1993	21190	188	315	-127	1	8.9	14.9	-6.0	5.3
1994	21032	237	347	-110	5	11.3	16.5	-5.2	21.1
1995	20874	220	361	-141	2	10.5	17.3	-6.8	9.1
1996	20716	196	391	-195	0	9.5	18.9	-9.4	0.0
1997	20559	214	339	-125	7	10.4	16.5	-6.1	32.7
1998	20401	192	345	-153	1	9.4	16.9	-7.5	5.2
1999	20243	180	345	-165	1	8.9	17.0	-8.1	5.6
2000	20085	177	361	-184	1	8.8	18.0	-9.2	5.6
2001	19927	196	294	-98	1	9.8	14.8	-5.0	5.1
2002	18988	187	295	-108	1	9.8	15.5	-5.7	5.3
2003	18878	166	328	-162	0	8.8	17.4	-8.6	0.0
2004	18724	184	311	-127	0	9.8	16.6	-6.8	0.0
2005	18558	156	318	-162	0	8.4	17.1	-8.7	0.0

Table. Natural changes of population, Ada

Year	Number of population	Livebirths	Deaths	Natural increase	Infants deaths	per 1000 population			Infant deaths per 1000 livebirths
						Livebirths	Deaths	Natural increase	
2006	18372	159	359	-200	0	8.7	19.5	-10.8	0.0
2007	18189	144	273	-129	0	7.9	15.0	-7.1	0.0
2008	18028	155	292	-137	1	8.6	16.2	-7.6	6.5
2009	17835	133	329	-196	1	7.5	18.4	-10.9	7.5
2010	17609	134	314	-180	1	7.6	17.8	-10.2	7.5
2011	17017	125	280	-155	0	7.3	16.5	-9.1	0.0
2012	16877	138	273	-135	0	8.2	16.2	-8.0	0.0
2013	16715	121	284	-163	0	7.2	17.0	-9.8	0.0
2014	16555	150	268	-118	0	9.1	16.2	-7.1	0.0
2015	16400	125	291	-166	0	7.6	17.7	-10.1	0.0
2016	16237	122	286	-164	0	7.5	17.6	-10.1	0.0
2017	16093	145	288	-143	0	9.0	17.9	-8.9	0.0
2018	15943	130	292	-162	0	8.2	18.3	-10.2	0.0
2019	15779	141	280	-139	1	8.9	17.7	-8.8	7.1
2020	15617	117	262	-145	1	7.5	16.8	-9.3	8.5
2021	15437	127	358	-231	0	8.2	23.2	-15.0	0.0
2022	13344	116	309	-193	1	8.7	23.2	-14.5	8.6

Source: Vital Statistics, SORS

Definitions

Population size

Number of population in the respective year. The data on the number of population in 1961, 1971, 1981 and 1991 are census data, while for the inter-census years the number of population was calculated as an average inter-census difference. From 2002 are given the population estimates that were calculated according to the census of population results and the annual statistics of natural mechanical population movements.

Livebirths

Absolute number of live births in the course of a year. Live born child means a child giving vital signs after birth (breathing, i.e. heartbeat), even for the shortest time, regardless the mother's pregnancy duration.

Deaths

Absolute number of deaths in the course of a year. Deceased is a person that whenever after having been born live, shows permanently stopped vital signs.

Natural increase

Natural population increase is the number of live births minus the number of deaths.

Infants deaths

Absolute number of infants deaths in the course of a year. Deceased infant is a child that after having been born live and before aged one year, shows permanently stopped vital signs.

Livebirths, per 1 000 population

Livebirths rate is the ratio of the number of live births and the population size in the respective year. The number of live births is divided by the population size and then multiplied by 1000.

Deaths, per 1 000 population

General mortality rate represents the ratio between the number of deaths and the population size in the respective year. The number of deaths is divided by population size and then multiplied by 1000.

Natural increase, per 1 000 population

Natural population increase rate is the difference between the number of live births and the number of deaths, in relation to the population size in the respective year.

Natural population increase rate = (number of live births - number of deaths) / population size * 1000

Infants deaths, per 1 000 livebirths

Infant mortality rate is the ratio of deceased children under 1 year of age and live births in the respective year. The mortality rate is expressed per 1000 live births.

Infant mortality rate = (number of deceased children under 1 year of age / number of live births) * 1000

Additional info:



Download all database data in Excel format:

[Data](#)



DevInfo profiles:

devinfo.stat.gov.rs/SerbiaProfileLauncher/?lang=en



DevInfo online database:

devinfo.stat.gov.rs/vitalna



For additional information or questions please contact:

devinfo@stat.gov.rs